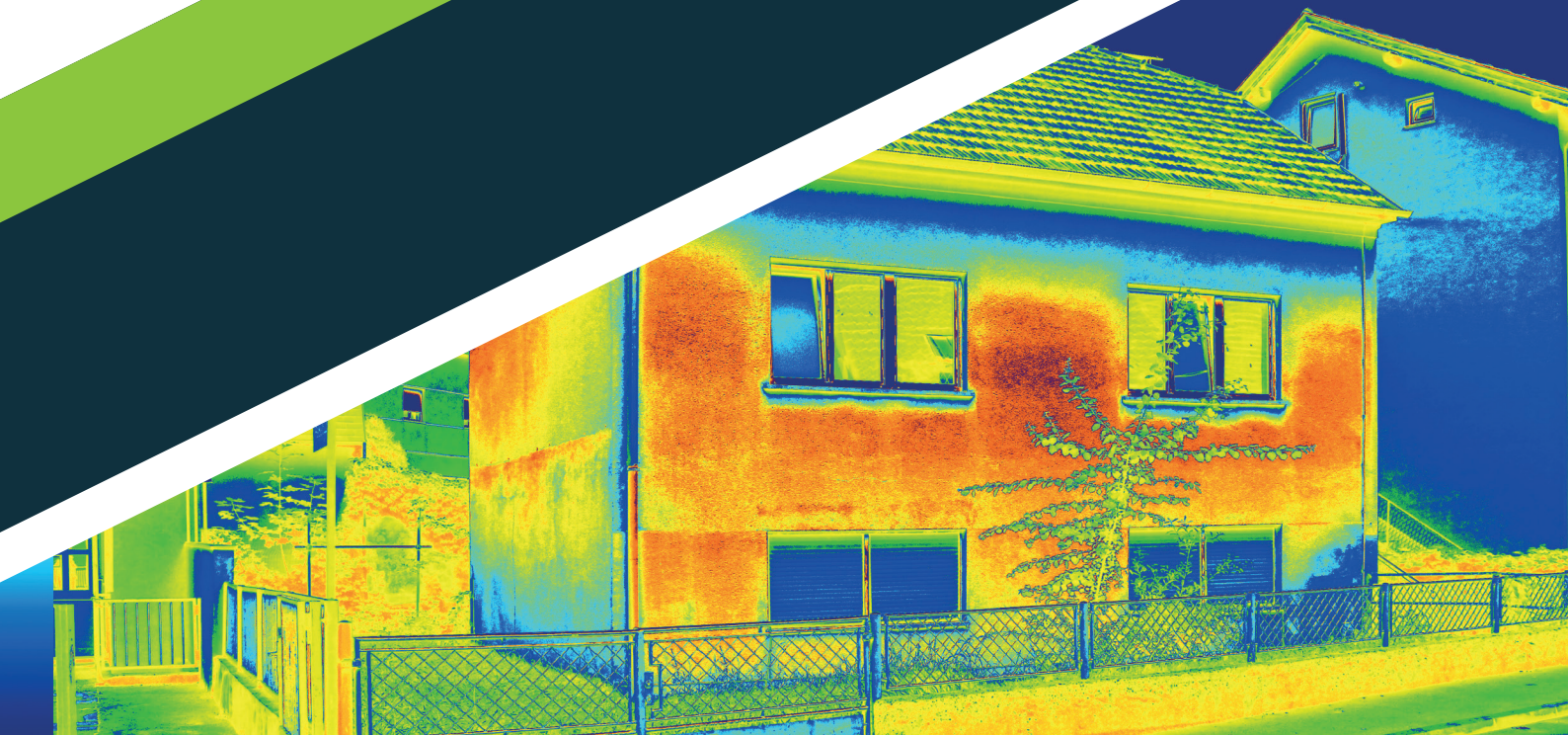


HAVANT ENERGY STRATEGY: 2016 – 2020

Library Ref: EB24



INTRODUCTION



This document provides a strategic framework to deliver energy projects across Havant Borough over the next 5 years. The energy strategy for Havant Borough sets out the direction of travel to improve energy security, reduce fuel poverty and maximise economic benefits. It will focus on:

SOCIETY

Our first area of focus is improving energy efficiency to offset fuel poverty. The number of people facing fuel poverty has been rising nationally, largely because of rising fuel prices. The Department of Energy and Climate Change (DECC) has stated that at least 7.4 % of Havant Households are fuel poor

ECONOMY

Our second area of focus is increasing local energy generation, through cost-effective energy solutions that will make Havant more attractive for those looking to invest and develop in the borough. Such energy solutions will add value to the Prosperity Havant Initiative and enable the council to attract funding and investment into the borough. Retaining energy spend through more local generating capacity - and savings made by reducing energy waste - will save businesses money.

ORGANISATION

The council will promote best practice through reducing energy use within its estate where possible, and will attract funding to deliver local energy projects in partnerships with others.

ENVIRONMENT

The 2008 Climate Change Act sets a target of reducing the UK's greenhouse gas emissions by at least 80% by 2050. By reducing energy demand across the borough and thus carbon emissions we will be contributing to this target. Our strategy will improve our communities by encouraging sustainable development and enhancing Havant as a great place to live and work.

OUR THREE PRINCIPLES

The strategy is defined by three key principles:

1

Improving energy efficiency

Reducing commercial and residential energy bills through building improvements and attracting funding support.



Increase local energy generation

Identifying and exploring low carbon energy generation opportunities across the borough.



2

3

Demonstrate council leadership

Leading by example with the council actively striving to reduce energy usage across its estate.



PRINCIPLE ONE

Improving energy efficiency



Improving the energy efficiency of domestic and commercial buildings is crucial for reducing the overall energy demand across the borough. More energy efficient homes will improve the health and prosperity of our residents. Comfortable places to work make people more productive and can reduce the number of working days lost to illness.

We will:

- Attract external funding to work towards a 10% reduction of number of fuel poor homes in the borough.
- Use the adopted local plan where appropriate to deliver energy efficient buildings for the future, whether refurbished buildings or new build stock.

Initial next steps:

- Complete delivery of the Green Deal Communities until October 2016. Should this be listed in a medium term document if ending so soon, and can continuing a function be a next step?
- Seek further funding to continue the reduction in fuel poor homes, working with stakeholders such as energy providers, social housing providers, other local authorities and community groups for delivery.

What will success look like?

- By 2020 the Cosy Havant programme will have improved energy efficiency in the borough's homes with over 300 energy saving measures installed



PRINCIPLE TWO

Increase local energy generation



The borough has a number of opportunities to deploy secure and local energy infrastructure across the borough.

We will:

- Ensure opportunities identified within the Prosperity Havant business plan for local energy infrastructure are explored with landowners.
- Explore the potential for low carbon energy generation in the borough and encourage the development of those that make commercial sense.

Initial next steps:

- Produce a high level heat demand master plan across the borough, identifying key sites for potential energy generation development.
- Apply for Heat Network Delivery Unit Funding from DBEIS - the Department of Business, Energy and Industrial Strategy.

What will success look like?

- Completion of a borough-wide heat demand master plan in 2016 will inform the local plan and provide the basis for commercial investment in heat networks, subject to funding.



PRINCIPLE THREE

Demonstrate council leadership



As a provider of services to the community, the council has a role to demonstrate leadership. We have already started to demonstrate leadership through reducing energy use per capita by 49.7 per cent at the Public Service Plaza over a six year period.

We will:

- Work with partners to reduce energy demand within the Council's own estate and fleet, providing both environmental and financial savings to the local authority.

Initial next steps:

- Working with partners identify opportunities within our own estate for energy reduction.
- Work with service managers to change behaviour and improve energy efficiency.
- Ensure staff who regularly visit residents identify and report signs of households living in fuel poverty.

What will success look like?

- By 2020, the council will have maintained a reduction in energy use per capita across its facilities.



ENABLING DELIVERY

We will work collaboratively with private and public sector partners, the community and the voluntary sector. With limited resources and no internal funding we will seek external funding through a combination of good targeting and strong business cases.

We will:



Apply for external funding to support delivery

The council will explore innovative ways of ensuring this strategy is cost neutral to the borough. This will include seeking external funding opportunities from The Solent Local Enterprise Partnership and Government.

Effective Marketing

Outcomes will be achieved through a tailored, targeted approach using dedicated Customer Insight and the forthcoming CRM (Customer Relationship Management) tool.

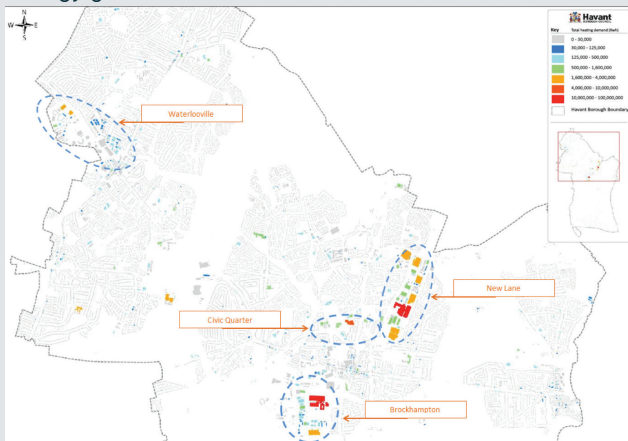


Work in partnership

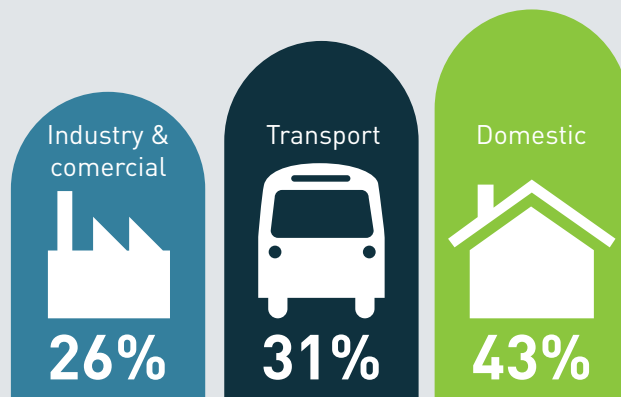
We will work with partners such as PUSH and Future South (partnership between Solent LEP, Hampshire Chamber of Commerce, PUSH and universities) to ensure maximum benefit.

ENERGY PROFILE

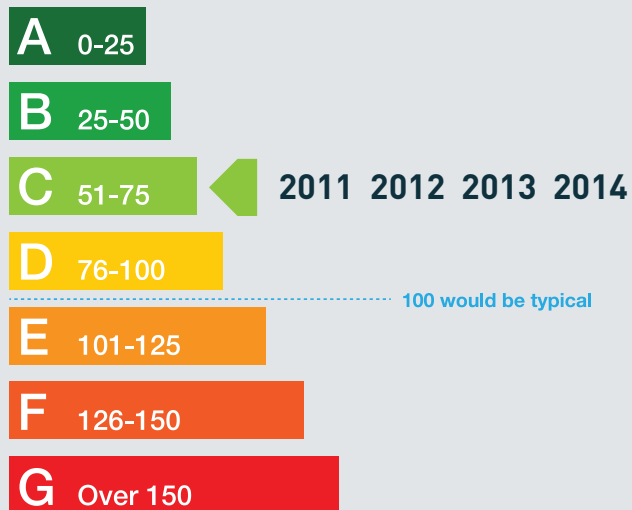
Heat Mapping has identified four areas of higher heat loads worthy of exploratory work for low carbon energy generation



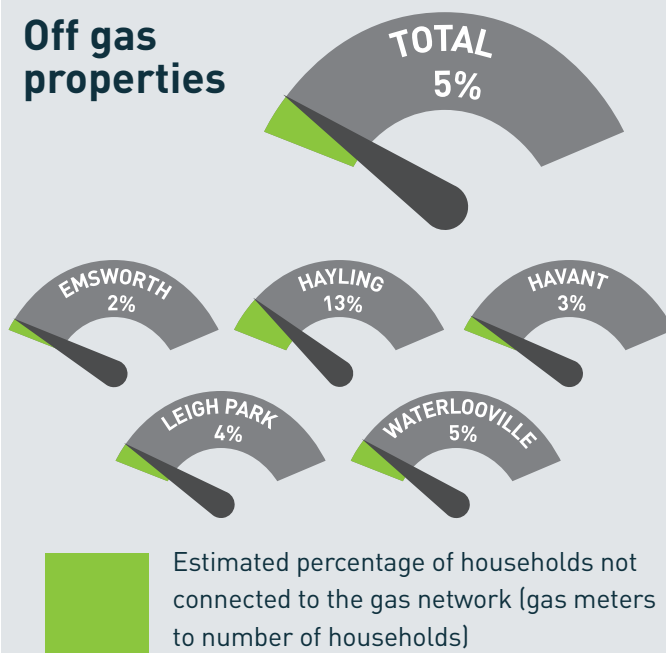
Per capita local CO2 emission estimates



Display Energy Certificate rating for the Plaza



Off gas properties



Energy efficiency ratings of domestic properties recorded as having an EPC

