

BUILDING

A BETTER FUTURE

Local Green Spaces and Destination Open Spaces in Havant Borough

June 2026



Local Green Spaces and Destination Open Spaces in Havant Borough

Any queries about the report should be sent to:

Email policy.design@havant.gov.uk

Telephone 023 9244 6539

Address: Havant Borough Council
Public Service Plaza
Civic Centre Way
Havant
PO9 2AX

Contents

Page

1. INTRODUCTION	1
2. POLICY CONTEXT	2
3. METHODOLOGY	4
4. LOCAL GREEN SPACE AND DESTINATION OPEN SPACE DESIGNATIONS	6
5. NEXT STEPS.....	9
APPENDIX 1: SITES FOR DESIGNATION.....	10
APPENDIX 2: DISCOUNTED SITES	17

1. Introduction

- 1.1 The purpose of this background paper is to explain the designation of Local Green Spaces (LGS) and Destination Open Spaces (DOS) in the Council's new Local Plan - the Building a Better Future Plan. It sets out the national and local policy context to Local Green Spaces and explains the methodology for the designation of LGSs and DOSs in Havant Borough.
- 1.2 LGS and DOS are specific types of green space designation, but form part of an overall network of green spaces within and around urban and suburban areas. They can play an important role in defining the character of an area, and represent an important social, environmental, and economic resource to a local community which can easily be accessed. Green spaces provide a wide variety of environmental, economic and social benefits including:
- Creating a sense-of-place and facilitating community cohesion;
 - Improving physical and mental health through an increase of activity for adults and children;
 - Adapting to climate change through CO² absorption, shading or flood alleviation;
 - Creating more attractive places to work, live and visit;
 - Encouraging active transport like walking and cycling;
 - Improving air quality;
 - Improving water quality by reducing harmful runoff into local rivers; and
 - Enhancing biodiversity and opportunities for wildlife.
- 1.3 A full list of LGSs and DOSs proposed for designation in the Building a Better Future Plan is included in Appendix 1.
- 1.4 The Council previously published a Local Green Spaces and Destination Open Spaces paper as part of the Local Plan evidence base in July 2020. This 2026 paper has been updated to inform the Building a Better Future Plan.

2. Policy Context

National Policy Context

- 2.1 The 2024 National Planning Policy Framework (NPPF) recognises that access to a network of high-quality open spaces and opportunities for sport and physical activity is important for the health and well-being of communities. Local Green Spaces (LGS) are a specific designation of land through local and neighbourhood plans that allow communities to identify and protect green areas of particular importance to them.
- 2.2 Paragraph 107 of the NPPF notes that the designation should only be used where the green space is:
- a) *in reasonably close proximity to the community it serves;*
 - b) *demonstrably special to a local community and holds a particular local significance, for example because of its beauty, historic significance, recreational value (including as a playing field), tranquility or richness of its wildlife; and*
 - c) *Local in character and is not an extensive tract of land.*
- 2.3 NPPF Paragraph 106 notes that the LGS designations should be consistent with the local planning of sustainable development and complement investment in sufficient homes, jobs and other essential services. LGS should only be designated when a plan is prepared or updated, and be capable of enduring beyond the end of the plan period.

National Planning Practice Guidance

- 2.4 National Planning Practice Guidance¹ includes a section on 'Local Green Space designation'.
- 2.5 Paragraph 013 states that green areas to be identified as LGS will need to meet the criteria set out in the NPPF, however "*whether to designate is a matter for local discretion*". This allows local authorities to decide whether a site is designated as LGS, and to set out their own guidance and criteria to assess sites for designation.
- 2.6 Paragraph 007 of the PPG states that "*designating any Local Green Space will need to be consistent with local planning for sustainable development in the area. In particular, plans must identify sufficient land in suitable locations to meet identified development needs and the Local Green Space designation should not be used in a way that undermines this aim of plan making.*"

¹ <https://www.gov.uk/guidance/open-space-sports-and-recreation-facilities-public-rights-of-way-and-local-green-space#Local-Green-Space-designation> (see Paragraphs 005-022 Reference ID: 37-022-20140306)

Local Policy Context

- 2.7 Havant Borough has a high level of identified housing need. The Council is preparing the new Local Plan to address this need together with other development needs and supporting infrastructure.
- 2.8 As set out above, the NPPF states that Local Green Spaces should only be designated when a plan is prepared or reviewed and should be capable of enduring beyond the end of the plan period.
- 2.9 Local communities have the opportunity to propose areas of open space for designation at the different stages of plan making. Individuals and community groups can propose new spaces, which they consider meeting the criteria set out in the NPPF. They are asked to suggest any amendments or deletions, again having regard to the criteria. Suggestions have been and will continue be considered against the evaluation matrix in Appendices and 1 and 2. Any proposed green spaces which are considered appropriate for designation, will be taken forward into the Building a Better Future Plan.
- 2.10 The Emsworth Neighbourhood Plan (ENP) was adopted, or 'made' by the Council in September 2021, and forms part of the development plan for Havant Borough. As part of the neighbourhood plan, several Local Green Spaces (LGS) were designated under Policy C5. To ensure consistency with ENP, these designated LGS have been included in Appendix 1 and are reflected in the emerging Local Plan (the Building a Better Future Plan).
- 2.11 The following section of this report explains the methodology used to inform the proposed designation of LGS.

3. Methodology

- 3.1 The designation of green spaces as either a Local Green Space (LGS) or a Destination Open Space (DOS) is dependent on certain criteria being met.
- 3.2 The starting point was to consider all green spaces for designation as LGSs. This is because it is a formal designation recognised in the NPPF. However, this designation requires very specific criteria to be met, one of which is related to size ('an extensive tract of land').
- 3.3 A number of sites are too extensive to meet the nationally set criteria for LGS, such as woodland. Nevertheless, the Council recognises the value of these spaces to the local community and in this assessment includes a category of DOS to allow these sites to be protected in a similar way to LGS.
- 3.4 On this basis, if a site was under 10 hectares in size, it was considered for LGS designation. If it was over 10 hectares it was considered for DOS designation, unless it was already designated as a LGS through the Emsworth Neighbourhood Plan.

Local Green Spaces

- 3.5 The NPPF criteria for the designation of LGS were used to create the evaluation matrix, in Appendices 1 and 2. All previously proposed green spaces were entered into this matrix, along with the LGS designated through the Emsworth Neighbourhood Plan.
- 3.6 To designate a space, it needs to meet three criteria:
 - Proximity to the community,
 - Special significance, and
 - Site size.
- 3.7 The assessment of site proximity to the local community is based on both the distance that the site is from the local community and whether the public can access the site. For designation to be successful both points need to be achieved. As Havant Borough covers quite a small mainly urbanised area, most of the proposed greenspaces were located in reasonably close proximity to the community they serve.
- 3.8 In terms of public access, the main effect of the application of this criterion was that allotments could not be designated due to not necessarily being publicly accessible. However, allotments will continue to be protected, alongside other public open space provision through the relevant thematic policies in the Building a Better Future Plan. The assessment of whether a site is of special significance to the local community is based on its beauty, historic significance, recreational value, tranquility, and richness of wildlife which are largely subjective judgements. For designation to be successful, a minimum of three points need to be achieved. The scoring varied widely with some sites appearing to have no special attributes, with other sites being demonstrably special in respect of all five criteria.
- 3.9 Finally, it is not possible to designate areas which are extensive tracts of land as a Local Green Space. However, land which met the LGS criteria apart from site size was then considered for DOS designation.

Destination Open Spaces

- 3.10 Open spaces are proposed for designation as DOS if they are over 10 hectares in size. They are considered particularly important due to their range of multifunctional uses and activities and, as such, residents are likely to travel further to access them. For example, Staunton Country Park, Hayling Beach and the Hayling Billy Trail.

Links with planning for Sustainable Development

- 3.11 The NPPF requires the designation of LGS to be consistent with local planning for sustainable development. This matter was therefore considered for every open space that met the other criteria. All of the open spaces were not found to deliberately hinder development on potentially suitable development sites, and therefore to be consistent with the local planning of sustainable development.

Sites Identified as Local Green Spaces through the Emsworth Neighborhood Plan

- 3.12 This paper includes the identified LGS identified in the Emsworth Neighbourhood Plan. These have been included in Table 1 and Appendix 1.
- 3.13 Through that process, notwithstanding the Council's own assessment methodology, three allotment sites, a body of water and some sites previously considered too extensive for LGS designation have been added (see Appendix 1 and the Emsworth Neighbourhood Plan² for further information).
- 3.14 Inclusion of these sites reflects the Council's acceptance that LGS can consist of a variety of spaces and is ultimately a matter of local judgement.

² Emsworth Neighbourhood Plan (adopted 2021): <https://www.havant.gov.uk/planning-services/planning-policy/neighbourhood-planning/emsworth-neighbourhood-plan>

4. Local Green Space and Destination Open Space Designations

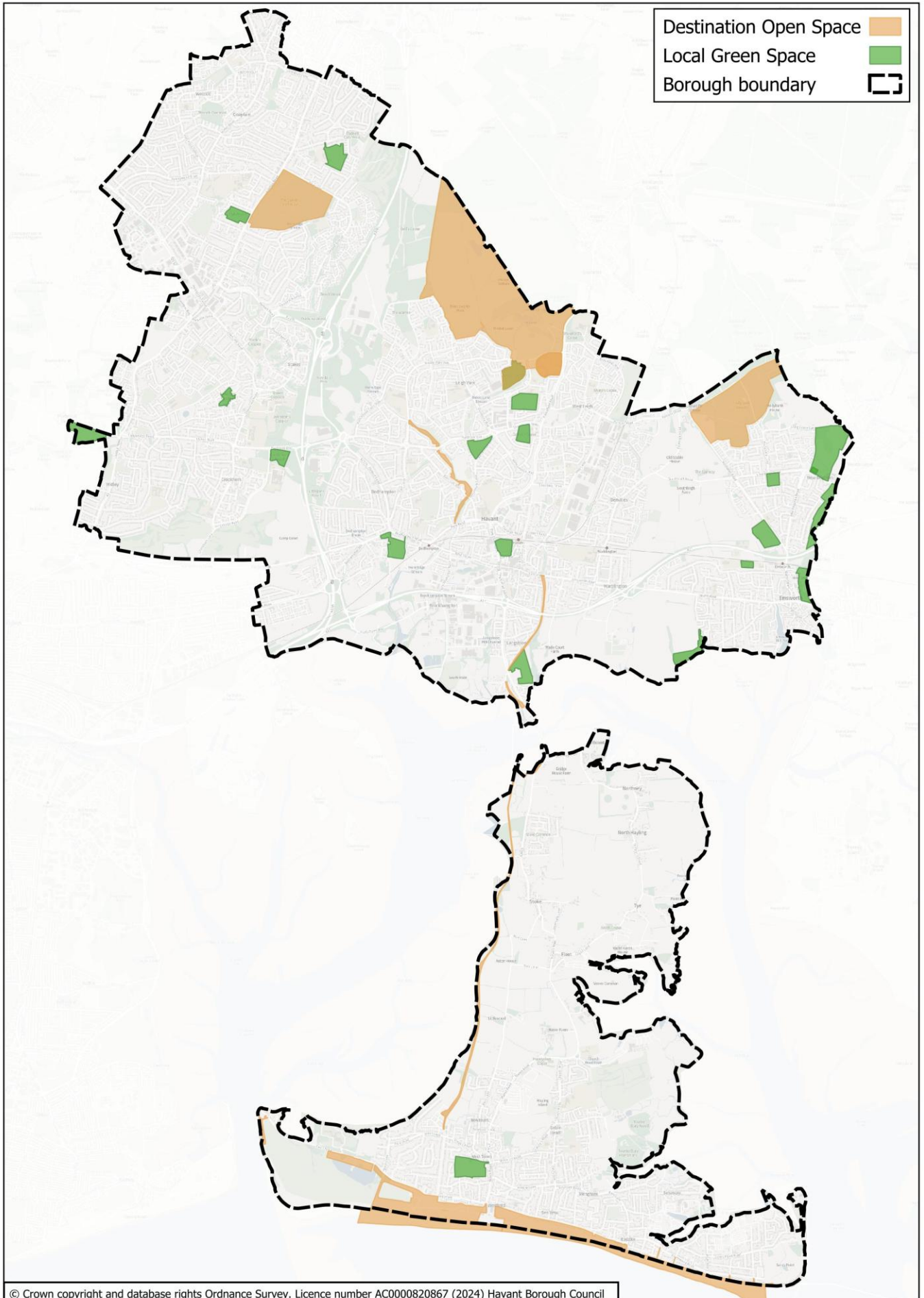
- 4.1 All sites proposed for designation were subject to a detailed appraisal applying the criteria as set out in Section 3. The reasons for inclusion and rejection from designation as a Local Green Space or Destination Opens Space are set out in Appendices 1 and 2 respectively.
- 4.2 The final selection of sites to be designated as Local Green Spaces and Destination Open Spaces, is listed in Table 1 below and shown on Figure 1.

Table 1: Sites proposed for protection through the Building a Better Future Plan	
Local Green Space	Destination Open Space
Battins Copse	Hayling Beach
Bidbury Mead	Hayling Billy Trail
Brook Meadow Local Nature Reserve	Hermitage Stream
Cowplain Recreation Ground	Hollybank Woods
Ems Valley Corridor	Queen's Inclosure
Emsworth Town Millpond	Staunton Country Park
Emsworth Recreation Ground	
Emsworth (Victoria Cottage) Community Hospital Garden	
Front Lawn Recreation Ground	
Great Copse	
Gundymoor Wood	
Hampshire Farm Meadow	
Havant Park	
Hayling Park	
Hollybank Recreation Ground	
Langstone Meadows	
Newlease Coppice	
Nore Barn Woods	
Park Wood	
Purbrook Heath	

Table 1: Sites proposed for protection through the Building a Better Future Plan

Redlands Grange Allotments	
Stockheath Common	
St Clare's Wood	
Warblington Road Allotments	
Washington Road Allotments	
Waterlooville Recreation Ground	

Figure 1: Local Green Spaces and Destination Open Spaces location within Havant Borough



5. Next Steps

- 5.1 The designation of Local Green Spaces (LGS) and Destination Open Spaces (DOS) through the Building a Better Future Plan is informed by green spaces proposed by the community. The designated sites have been reviewed further to the Local Plan consultation responses. This paper explains the Council's approach to the proposed designation of LGS and DOS, as specific open space designations.
- 5.2 A specific policy on the protection of open spaces is included in the Building a Better Future Plan. It will apply to LGS and DOS, as well as other spaces identified by the Council's Open Space Strategy³. Only proposals that retain or enhance the quality, quantity and accessibility of these spaces will be permitted. There will be a presumption against development which does not meet these criteria.

³ <https://www.havant.gov.uk/planning-services/planning-policy/local-plan/local-plan-evidence-studies-and-strategies>

Appendix 1: Sites for Designation

About the site		Emsworth Neighbourhood Plan	Proximity to the community		Special Significance					Site size		Decision	
Site	Area of Borough	Is it within the Emsworth Neighbourhood Plan (ENP)?	Close proximity to community	Publicly Accessible	Beauty	Historic Significance	Recreation	Tranquillity	Wildlife	Extensive Tract of Land	LGS or DOS	Comments	Consistent with Sustainable Development
Battins Copse	Leigh Park	No	Yes	Yes	Yes	Yes	Yes	Yes	Yes	No	LGS	Demonstrably special area that is a fragment of ancient woodland from the Forest of Bere in the heart of Leigh Park.	Yes
Bidbury Mead	Havant	No	Yes	Yes	Yes	Yes	Yes	Yes	Yes	No	LGS	Well used local park in historic setting with a number of facilities including cricket pitch and equipped children's play area.	Yes
Brook Meadow Local Nature Reserve	Emsworth	Yes	Yes	Yes	Yes	Yes	Yes	Yes	Yes	No	LGS	Demonstrably special nature reserve on the edge of Emsworth looked after by Brook Meadow Conservation Group. Designated	Yes

About the site		Emsworth Neighbourhood Plan	Proximity to the community			Special Significance				Site size		Decision	
												LGS under Policy C5 of the ENP.	
Cowplain Recreation Ground	Waterlooville	No	Yes	Yes	Yes	No	Yes	Yes	Yes	No	LGS	An important urban greenspace. A well-used park with facilities including cricket pitch and pavilion, bowls green, tennis courts, and children's play area.	Yes
Ems Valley Corridor	Emsworth	Yes	----	----	----	----	----	----	----	----	LGS	Designated LGS under Policy C5 of the ENP.	Yes
Emsworth Community Hospital Garden⁴	Emsworth	Yes	Yes	Yes	Yes	Yes	Yes	Yes	Yes	No	LGS	A small pocket of green space located in an urbanised area of Emsworth. An area of green space which is maintained by the Friends of Emsworth Community Health as a public amenity. Designated LGS under Policy C5 of the ENP.	Yes

⁴ Previously known as Victoria Cottage Hospital Garden

About the site		Emsworth Neighbourhood Plan	Proximity to the community			Special Significance					Site size	Decision	
Emsworth Town Millpond	Emsworth	Yes	---	----	----	---	---	---	---	---	LGS	Designated LGS under Policy C5 of the ENP.	Yes
Emsworth Recreation Ground	Emsworth	Yes	Yes	Yes	Yes	No	Yes	Yes	Yes	No	LGS	An important urban greenspace. Designated LGS under Policy C5 of the ENP.	Yes
Front Lawn Recreation Ground	Leigh Park	No	Yes	Yes	No	No	Yes	Yes	Yes	No	LGS	A well-used local park with a number of facilities including a cricket pitch and equipped children's play area.	Yes
Great Copse	Leigh Park	No	Yes	Yes	Yes	Yes	Yes	Yes	Yes	No	LGS	Demonstrably special area that is a fragment of ancient woodland from the Forest of Bere in the heart of Leigh Park	Yes
Gundymoor Wood	Waterlooville	No	Yes	Yes	Yes	No	Yes	Yes	Yes	No	LGS	An area of woodland providing public access and a diverse range of wildlife, managed by the woodland Trust.	Yes
Hampshire Farm Meadow	Emsworth	Yes	Yes	Yes	Yes	No	No	Yes	Yes	No	LGS	A large area of land and important green space. Designated LGS under Policy C5 of the ENP.	Yes
Havant Park	Havant	No	Yes	Yes	No	Yes	Yes	Yes	No	No	LGS	An important urban greenspace.	Yes

About the site		Emsworth Neighbourhood Plan	Proximity to the community			Special Significance				Site size	Decision		
Hayling Beach	Hayling Island	No	Yes	Yes	Yes	Yes	Yes	Yes	Yes	Yes	DOS	Although it is a demonstrable special area, it is an extensive tract of land and cannot be allocated as a LGS	Yes
Hayling Billy Trail	Hayling Island	No	Yes	Yes	Yes	Yes	Yes	Yes	Yes	Yes	DOS	Well used footpath and cycle way following the former railway line between Havant and Hayling Island. Due to it being an extensive tract of land it cannot be allocated as a LGS.	Yes
Hayling Park	Hayling Island	No	Yes	Yes	No	No	Yes	No	Yes	No	LGS	An important urban greenspace.	Yes
Hermitage Stream	Havant/ Leigh Park	No	Yes	Yes	Yes	No	Yes	Yes	Yes	Yes	DOS	Demonstrably special area forming a green/blue corridor in the heart of Leigh Park.	Yes
Hollybank Woods	Emsworth	No	Yes	Yes	Yes	No	Yes	Yes	Yes	Yes	DOS	Demonstrably special nature reserve on the edge of Emsworth looked after by Friends of Hollybank Woods.	Yes
Hollybank Recreation Ground	Emsworth	Yes	Yes	Yes	Yes	No	Yes	Yes	Yes	No	LGS	A well-used local park by the community with a cricket pitch and	Yes

About the site		Emsworth Neighbourhood Plan	Proximity to the community			Special Significance				Site size	Decision		
												pavilion, children's play area, and skate park. Designated LGS under Policy C5 of the ENP.	
Langstone Meadows	Havant	No	Yes	Yes	Yes	Yes	Yes	Yes	Yes	No	LGS	Demonstrably special open fields with a public right of way running through it linking Langstone Village to the Billy Trail. Medieval ridge and furrow field markings evident in the upper fields.	Yes
Newlease Coppice	Waterlooville	No	Yes	Yes	Yes	No	Yes	Yes	Yes	No	LGS	A well laid out green space with woodland vegetation, and clearly defined paths used by the local community.	Yes
Nore Barn Woods	Emsworth	Yes	Yes	Yes	Yes	Yes	Yes	Yes	Yes	Yes	LGS	Demonstrably special nature reserve on the edge of Emsworth looked after by Friends of Nore Barn Woods. Designated LGS under Policy C5 of the ENP.	Yes
Park Wood	Waterlooville	No	Yes	Yes	Yes	Yes	Yes	Yes	Yes	No	LGS	Demonstrable special area that is a	Yes

About the site		Emsworth Neighbourhood Plan	Proximity to the community			Special Significance				Site size	Decision		
												fragment of ancient woodland from the Forest of Bere in the heart of Waterlooville.	
Purbrook Heath	Waterlooville	No	Yes	Yes	Yes	Yes	Yes	Yes	Yes	No	LGS	An important urban greenspace	Yes
Queen's Inclosure	Waterlooville	No	Yes	Yes	Yes	Yes	Yes	Yes	Yes	Yes	DOS	Demonstrably special area that is a fragment of ancient woodland from the Forest of Bere in the heart of Waterlooville	Yes
Redlands Grange Allotments	Emsworth	Yes	----	----	----	----	----	----	----	----	LGS	Designated LGS under Policy C5 of the ENP.	Yes
Staunton Country Park	Leigh Park	No	Yes	Yes	Yes	Yes	Yes	Yes	Yes	Yes	DOS	A demonstrably special greenspace with farm, gardens and country park.	Yes
Stockheath Common	Leigh Park	No	Yes	Yes	No	Yes	Yes	No	No	No	LGS	The common is in the heart of Leigh Park and is well used for community events.	Yes
St Clare's Wood	Leigh Park	No	Yes	Yes	Yes	No	Yes	Yes	Yes	No	LGS	Demonstrably special area with both woodland which is managed by the Woodland Trust and open space, with a children's play area and cycle area.	Yes

About the site		Emsworth Neighbourhood Plan	Proximity to the community			Special Significance				Site size	Decision		
Warblington Road Allotments	Emsworth	Yes	---	---	---	---	---	---	---	---	LGS	Designated LGS under Policy C5 of the ENP.	Yes
Washington Road Allotments	Emsworth	Yes	---	---	---	---	---	---	---	---	LGS	Designated LGS under Policy C5 of the ENP.	Yes
Waterlooville Recreation Ground	Waterlooville	No	Yes	Yes	Yes	No	Yes	Yes	Yes	No	LGS	An important urban greenspace. A well-used park with facilities including; cricket pitch and pavilion, bowls green, tennis courts, cycle track, and children's play area.	Yes

Appendix 2: Discounted Sites

About the site		Proximity to the community		Special Significance					Site Size		Decision
Site	Area of Borough	Close proximity to community	Public open space	Beauty	Historic Significance	Recreation	Tranquillity	Wildlife	Extensive Tract of Land	LGS / DOS	Comments
All green spaces between Havant, Warblington, Emsworth, Prinstead, Southbourne etc. should be maintained particularly Nore Barn Woods, Hollybank Woods and Brook Meadow	Emsworth	N/A	N/A	N/A	N/A	N/A	N/A	N/A	N/A	N/A	The areas listed are not specific enough to designate.
Barton Road Open Space	Leigh Park	No	No	Yes	No	No	Yes	No	No	No	Private field with no public access that has planning permission for a crematorium; not wholly located in Havant Borough.
Blendworth Crescent Open Space	Leigh Park	Yes	Yes	No	No	No	No	No	No	No	Small area of grassland that is not demonstrably special.
Bosmere School Playing Fields	Havant	Yes	No	No	No	Yes	No	Yes	No	No	Well landscaped school grounds but without public access
Brockhampton Springs	Havant	Yes	No	Yes	Yes	No	Yes	Yes	No	No	Demonstrably special location of Brockhampton Springs in the heart of Havant, but public access is not permitted in order to protect water supply.

About the site		Proximity to the community		Special Significance					Site Size		Decision
Site	Area of Borough	Close proximity to community	Public open space	Beauty	Historic Significance	Recreation	Tranquillity	Wildlife	Extensive Tract of Land	LGS / DOS	Comments
Campdown	Waterlooville	Yes	No	Yes	Yes	No	No	Yes	Yes	No	The site is privately owned and an extensive tract of land. Therefore, it does not qualify.
Covert Grove, off Holst Way	Waterlooville	Yes	Yes	No	No	Yes	No	Yes	Yes	No	It is not demonstrably special.
Grounds of the Public Service Plaza	Havant	Yes	Yes	No	No	No	No	No	No	No	Well landscaped grounds for Public Service Plaza, but not demonstrably special.
Extension of Purbrook Heath to include woods	Waterlooville	Yes	Yes	Yes	No	Yes	No	Yes	No	No	Purbrook Heath is already allocated. It is not possible to extend the LGS allocation beyond the Borough boundary.
Existing agricultural land to East and West of Northney village and Copse Lane	Hayling Island	Yes	No	No	No	No	Yes	Yes	Yes	No	It is not a public open space therefore it does not qualify.
Existing agricultural land to the East of A3023	Hayling Island	Yes	No	No	No	No	Yes	No	Yes	No	It is not a public open space therefore it does not qualify.
Fields along the Solent Way between Emsworth and Warblington	Emsworth	Yes	No	No	No	No	No	Yes	No	No	The land is not publicly accessible therefore does not qualify for LGS designation.
Foreshore between Langstone and Warblington	Havant / Emsworth	Yes	No	Yes	Yes	Yes	Yes	Yes	Yes	No	Due to the mixed ownership of land and not having a defined boundary to assess the criteria against it cannot be afforded formal designation.

About the site		Proximity to the community		Special Significance					Site Size		Decision
Site	Area of Borough	Close proximity to community	Public open space	Beauty	Historic Significance	Recreation	Tranquillity	Wildlife	Extensive Tract of Land	LGS / DOS	Comments
Hooks Lane Recreation Ground	Havant	Yes	Yes	No	No	Yes	No	No	No	No	Well used recreation ground but not demonstrably special.
Hurst Wood of Dornmere Lane	Waterlooville	Yes	Yes	No	No	Yes	No	Yes	Yes	No	It is not demonstrably special.
Interbridges East	Emsworth	Yes	No	No	No	No	No	No	No	No	Private field with no public access that is not demonstrably special
Land around Warblington Church and Farm	Emsworth	Yes	No	No	Yes	No	No	Yes	Yes	No	The land is privately owned therefore does not qualify.
Land East of footpath 102, including Tournebury Golf Course	Hayling Island	Yes	No	Yes	No	Yes	Yes	Yes	Yes	No	It is not a public open space therefore it does not qualify.
Land at Goldring Close	Hayling Island	Yes	No	Yes	No	No	No	No	No	No	Private field with no public access that is not demonstrably special.
Land west of the River Ems and east of Westwood Close	Emsworth	Yes	No	Yes	Yes	Yes	Yes	Yes	Yes	No	There is an informal access route however, the land is privately owned and used for agricultural uses. Overlap with 'Ems Valley Corridor'. Please see Appendix 1.
Long Copse Lane	Emsworth	Yes	No	No	No	Yes	No	Yes	No	No	The site is privately owned and not publicly accessible therefore not suitable for designation.

About the site		Proximity to the community		Special Significance					Site Size		Decision
Site	Area of Borough	Close proximity to community	Public open space	Beauty	Historic Significance	Recreation	Tranquillity	Wildlife	Extensive Tract of Land	LGS / DOS	Comments
Open green space between Rowans Road and Elder Road, Denvilles	Havant	Yes	Yes	No	No	Yes	No	Yes	No	No	Attractive pocket park with mature trees, but is not demonstrably special
Open green space lying between Japonica Way, Snowberry Way and Acer Crescent	Havant	Yes	Yes	No	No	Yes	No	No	No	No	Attractive pocket park, but is not demonstrably special
Open green space next to Old Copse Road	Leigh Park	Yes	Yes	No	No	Yes	No	No	No	No	Well landscaped area that appears well used by local people but not demonstrably special.
Scratchface Lane Recreation Ground	Havant	Yes	Yes	No	No	Yes	No	No	No	No	Well used recreation ground but not demonstrably special.
Stokes Common and Stokes Wood	Hayling Island	Yes	No	Yes	No	No	Yes	Yes	No	No	Land is privately owned and there is no public access.
Southleigh Strategic Site: eastern edge to the north and south of the site, and the green strip through the centre.	Emsworth / Havant	N/A	N/A	N/A	N/A	N/A	N/A	N/A	N/A	N/A	Southleigh Strategic Site is not completed therefore, it is difficult to identify whether the criteria have been met currently. The site will be reassessed in due course.
Southleigh	Emsworth / Havant	Yes	No	No	No	No	No	No	Yes	No	Further to assessment, it is considered that Southleigh is an extensive tract of land that is not publicly accessible. The site is not demonstrably special therefore not suitable for designation.

About the site		Proximity to the community		Special Significance					Site Size	Decision	
Site	Area of Borough	Close proximity to community	Public open space	Beauty	Historic Significance	Recreation	Tranquillity	Wildlife	Extensive Tract of Land	LGS / DOS	Comments
Southmere Field, Langstone	Havant	Yes	No	No	No	Yes	No	No	No	No	Private field with no public access that has no special significance.
Some Allotments	Havant Borough	Yes	No	No	No	Yes	No	No	No	No	Due to allotments not being accessible to the public they cannot be classed as a LGS.
The area between Westbourne and Emsworth	Emsworth	N/A	N/A	N/A	N/A	N/A	N/A	N/A	N/A	N/A	The area listed is not specific enough to designate.
The SYRCH Centre at Spencers Field	Emsworth	Yes	Yes	No	No	Yes	No	No	No	No	Open space well used by young people but not demonstrably special in terms of beauty, history, tranquillity or wildlife
The Horse Field, Havant Road	Emsworth	Yes	No	No	No	No	No	No	No	No	The fields are privately owned therefore cannot be designated as a LGS due to lack of access.
Warblington School's playing fields	Havant	Yes	No	No	No	Yes	No	No	No	No	Well used school playing fields but without public access.
Other Proposed Sites (Not-Specified Areas)											
Coastlines (general)	Hayling Island	N/A	N/A	N/A	N/A	N/A	N/A	N/A	N/A	N/A	The proposed areas have not been specified enough to assess or designate

About the site		Proximity to the community		Special Significance					Site Size		Decision
Site	Area of Borough	Close proximity to community	Public open space	Beauty	Historic Significance	Recreation	Tranquillity	Wildlife	Extensive Tract of Land	LGS / DOS	Comments
Green Space (General)	Havant/ Waterlooville/ Emsworth/ Hayling Island	N/A	N/A	N/A	N/A	N/A	N/A	N/A	N/A	N/A	The proposed areas have not been specified enough to assess or designate
Hayling Island (General)	Hayling Island	N/A	N/A	N/A	N/A	N/A	N/A	N/A	N/A	N/A	The proposed areas have not been specified enough to assess or designate
Emsworth (General)	Emsworth	N/A	N/A	N/A	N/A	N/A	N/A	N/A	N/A	N/A	The proposed areas have not been specified enough to assess or designate
Parks (General)	Havant/ Waterlooville/ Emsworth/ Hayling Island	N/A	N/A	N/A	N/A	N/A	N/A	N/A	N/A	N/A	The proposed areas have not been specified enough to assess or designate
Farmland (General)	Emsworth/ Hayling Island	N/A	N/A	N/A	N/A	N/A	N/A	N/A	N/A	N/A	The proposed areas have not been specified enough to assess or designate
New development sites (General)	Havant/ Waterlooville/ Emsworth	N/A	N/A	N/A	N/A	N/A	N/A	N/A	N/A	N/A	The proposed areas have not been specified enough to assess or designate
Waterlooville Town Centre	Waterlooville	N/A	N/A	N/A	N/A	N/A	N/A	N/A	N/A	N/A	No sites have been specified here to assess or designate.
Walking paths (General)	Havant/ Waterlooville/ Emsworth/ Hayling Island	N/A	N/A	N/A	N/A	N/A	N/A	N/A	N/A	N/A	Those are part of the public realm. No sites have been specified here to assess or designate.

About the site		Proximity to the community		Special Significance					Site Size		Decision
Site	Area of Borough	Close proximity to community	Public open space	Beauty	Historic Significance	Recreation	Tranquillity	Wildlife	Extensive Tract of Land	LGS / DOS	Comments
School playing fields (General)	Havant/ Waterlooville/ Emsworth/ Hayling Island	N/A	N/A	N/A	N/A	N/A	N/A	N/A	N/A	N/A	Although no site has been specified, this use falls under open space provision therefore it is not possible to designate.
Allotments (general)	Havant/ Waterlooville/ Emsworth/ Hayling Island	N/A	N/A	N/A	N/A	N/A	N/A	N/A	N/A	N/A	Although no site has been specified, this use falls under open space provision therefore it is not possible to designate.
Community gardens (general)	Havant/ Waterlooville/ Emsworth/ Hayling Island	N/A	N/A	N/A	N/A	N/A	N/A	N/A	N/A	N/A	Although no site has been specified, this use falls under open space provision therefore it is not possible to designate.
Cemetries (general)	Havant/ Waterlooville/ Emsworth/ Hayling Island	N/A	N/A	N/A	N/A	N/A	N/A	N/A	N/A	N/A	Although no site has been specified, this use falls under open space provision therefore it is not possible to designate.
Rowlands Castle	N/A. Outside of the Borough	N/A	N/A	N/A	N/A	N/A	N/A	N/A	N/A	N/A	Outside of the Borough boundary. The area is part of East Hants, therefore not possible to designate.
Peter/ Slipper Mill Ponds	Outside of the Borough	Yes	Yes	Yes	Yes	Yes	Yes	Yes	No	No	Proposed for LGS designation by the local community. As the site is located outside of Havant LP area, therefore not possible to designate.

