



Havant

BOROUGH COUNCIL

Building a Better Future Plan Youth Engagement Findings



Contents

1. Summary of key themes	3
2. Introduction and Background	9
3. Methodology.....	9
4. Youth Engagement Programme	12
5. Consultation Findings	13
5.1. Findings by key theme	13
5.2. Findings by geographic area	20
6. Next Steps	23
Appendix – Youth engagement materials	Error! Bookmark not defined.
Appendix – Youth engagement photos	Error! Bookmark not defined.

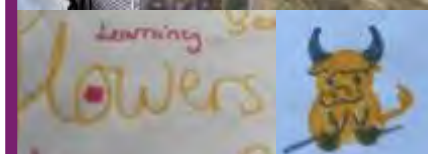
1. Summary of key themes

The following pages set out a summary of the key themes raised by participants in the youth engagement activities. These are further explored within Section 5 of the report.



The natural environment

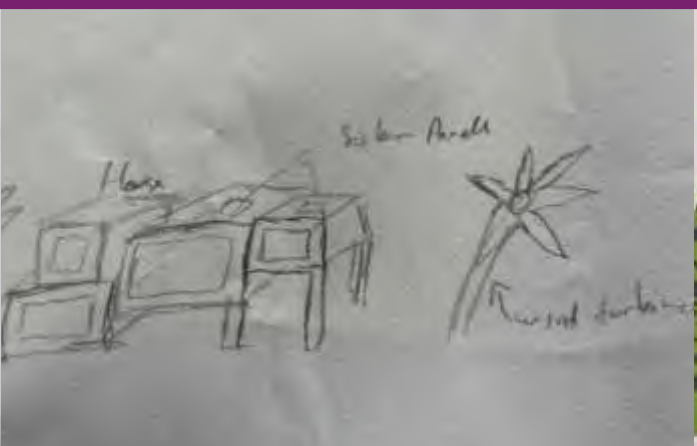
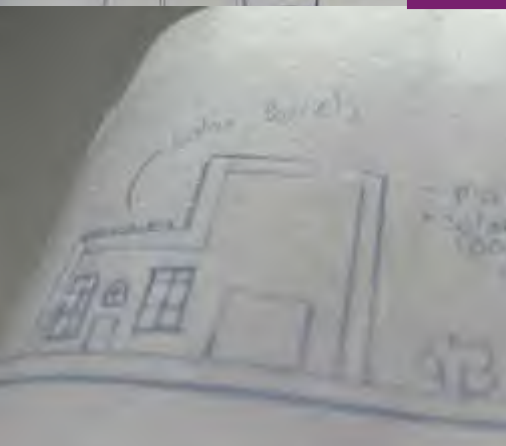
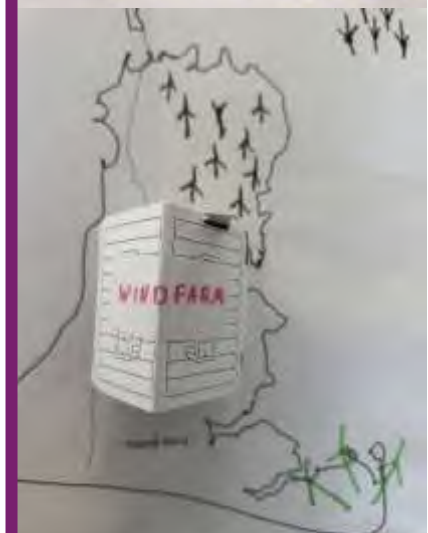
- High priority amongst participants
- Want to live near trees, plants and wildlife
- Enjoy living near to and having access to the sea
- Should protect natural areas wherever possible
- Exclude certain areas from development such as Staunton Country Park, Emsworth or Hayling Island due to their natural value
- Plant trees or include natural spaces within urban area
- In areas at risk of flooding, provide dedicated natural spaces
- Love for wildlife and prioritise protections for animals

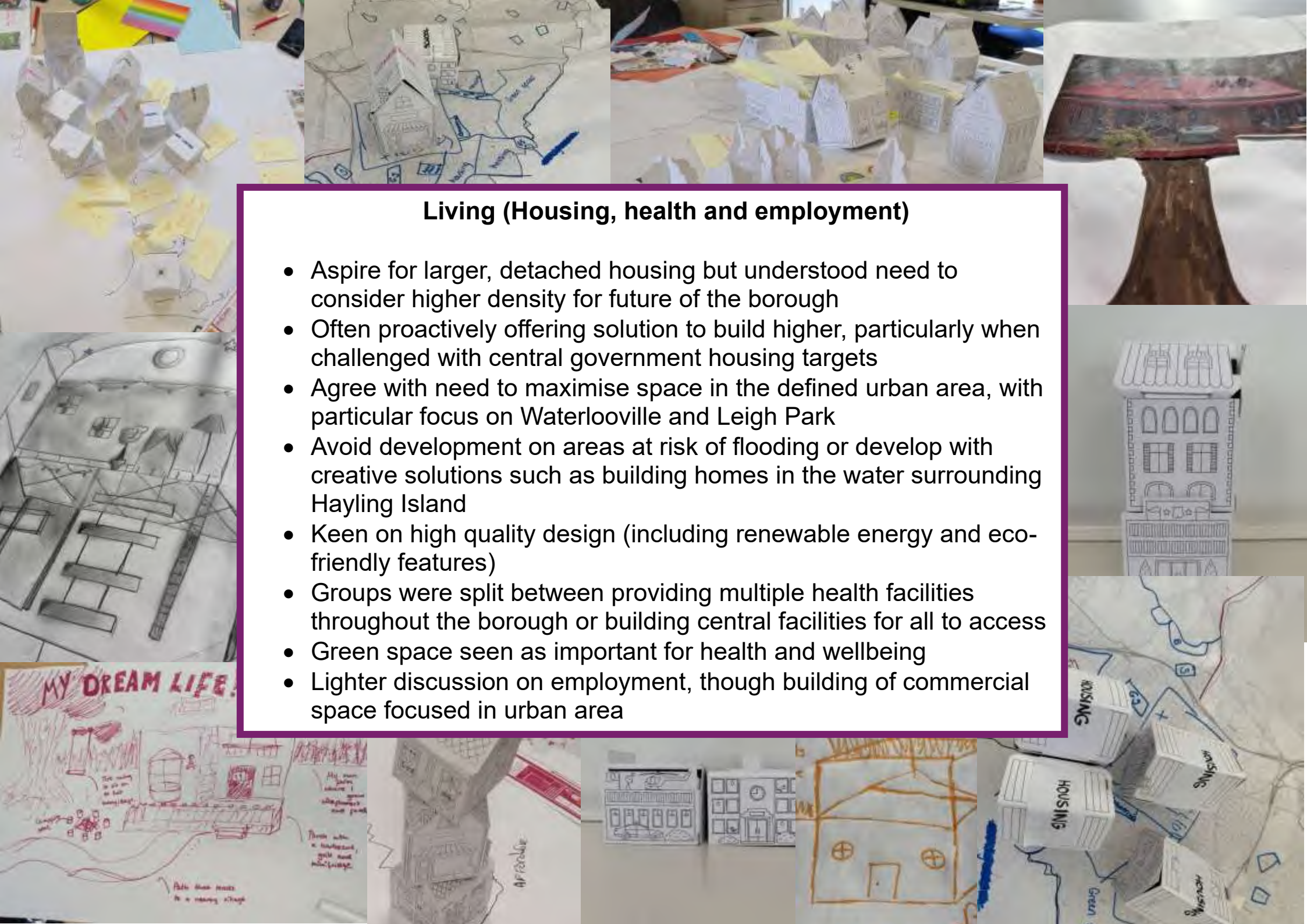




Renewable energy

- Linked to natural environment and another clear priority
- Groups sought multiple opportunities to introduce areas for the production of renewable energy in the borough
- Solar panels were the key method of production
- These could be provided within 'solar panel farms' (i.e. plots of land dedicated to generating solar electricity) or via including solar panels on all new homes
- Wind turbines – both on and off-shore – were popular suggestions
- Tidal power also referenced
- Seen to reduce pollution and improve quality of life



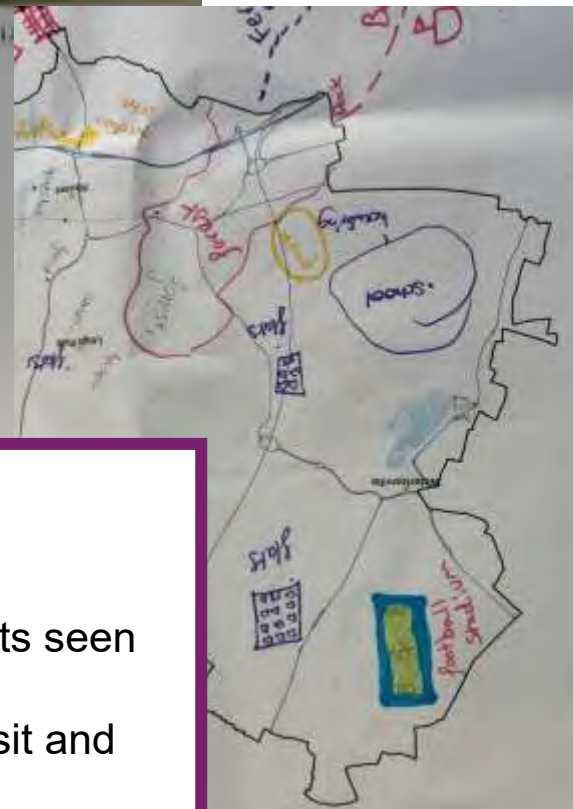
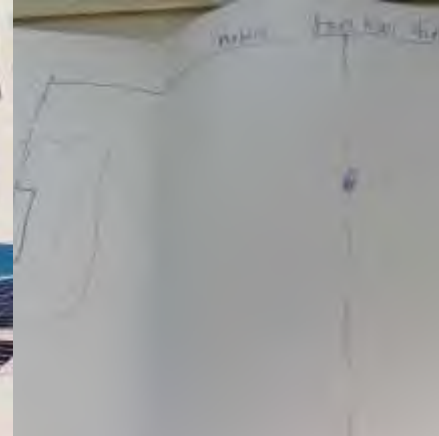


Living (Housing, health and employment)

- Aspire for larger, detached housing but understood need to consider higher density for future of the borough
- Often proactively offering solution to build higher, particularly when challenged with central government housing targets
- Agree with need to maximise space in the defined urban area, with particular focus on Waterlooville and Leigh Park
- Avoid development on areas at risk of flooding or develop with creative solutions such as building homes in the water surrounding Hayling Island
- Keen on high quality design (including renewable energy and eco-friendly features)
- Groups were split between providing multiple health facilities throughout the borough or building central facilities for all to access
- Green space seen as important for health and wellbeing
- Lighter discussion on employment, though building of commercial space focused in urban area



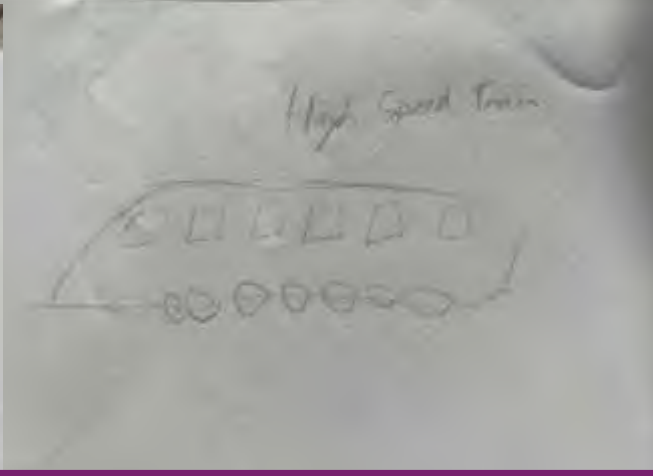
Call shops.
- take up less space
- fun



Leisure and recreation

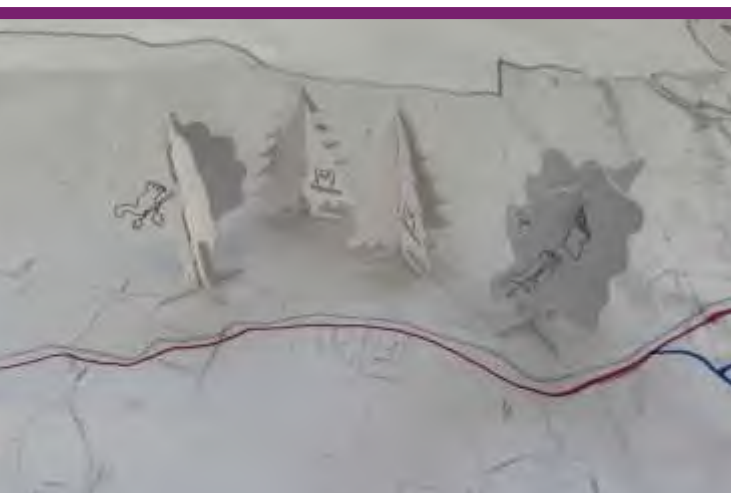
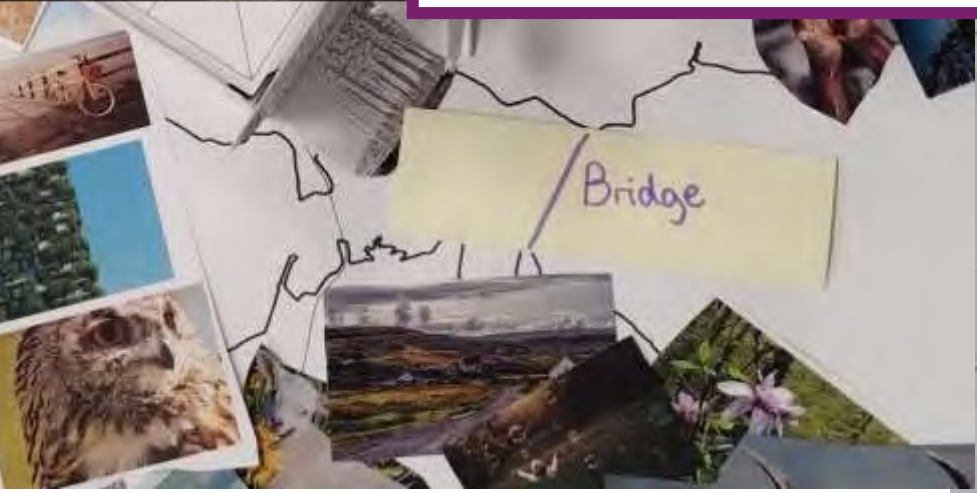
- Multiple suggestions for things to do in the local area
- Greater variety and availability of shops, with improvements seen as important for town centres
- More open or green spaces, parks and natural areas to visit and enjoy
- Tailor leisure offer to part of the borough – e.g. seaside attractions on Hayling Island, construct cinema and/or more food outlets within urban area.
- Sport facilities, mainly football pitches
- Groups discussed ensuring activities were free / low cost and made available for families.





Transport

- Participants less likely to have access to private vehicle so offered a number of innovative solutions for public transport
- Many suggestions were for access to Hayling Island
- Ways to improve public transport include extending the current rail network, introduce underground train systems or water-based links between Hayling Island and the mainland.
- Also ideas to build a second bridge to Hayling Island, enhance the bus network or bring in Park and Ride / Park and Walk schemes
- Ideas mainly encouraged low carbon, greener transport or active travel



2. Introduction and Background

To compliment the wider public consultation, Havant Borough Council conducted a series of youth engagement sessions to inform and shape the Draft Building a Better Future Plan.

This was to ensure that those in younger age ranges (those aged 25 and under) were able to provide detailed feedback to shape and influence the final Local Plan for the Borough of Havant.

A bespoke set of activities were designed in order to engage with these age ranges, with the aim of ensuring valuable and meaningful feedback was collected as well as providing an informative and engaging activity for participants.

Contact was made with all secondary schools in the borough, with a request to take part in this project between April and June 2025. Infant and junior schools were not invited due to the complexity of the information and activities. In addition, leads of relevant courses at Havant and South Downs College were contacted as well as those leading on economic development initiatives with young people as part of the Youth Hub scheme.

In providing this opportunity for young people to contribute to the Building a Better Future Plan, the council was seeking to ensure that participants in these age ranges – often considered to be seldom-heard from in local authority consultation exercises – were able to contribute as per the Engagement Strategy.

This in turn seeks to ensure that we are ‘a responsive council’ as per the Corporate Strategy, particularly in aiming for ‘increased participation in consultation’, as well as maximising opportunities to inform and engage with important stakeholders.

The following report provides the findings of the youth engagement exercises. The results of the full public consultation can be found in a separate report.

3. Methodology

It was recognised that a bespoke set of activities was required to effectively engage with younger respondents, with the aims of informing and being enjoyable for these participants as well as providing meaningful feedback to inform the Plan.

In order to gather this feedback, the following activities were designed and conducted with groups of young people:

Task 1 – Dream Life Collage

The first task asked for participants to create a collage of the key things that their dream life looks like for them, using a variety of images, art materials and drawings.

This was conducted with the whole class and each student was asked to put together their own individual collage. Materials were shared amongst groups of approximately 5 to 8 students.

The images provided included cutouts from magazines and newspapers as well as printed pictures on themes such as:

- Building design / types of building
- City / urban / suburban / rural environments
- Green / grey spaces
- Biodiversity and wildlife
- Landscaping and architecture
- Images of developments (featuring both positive and negative images)
- Elements of infrastructure (e.g. roads, doctors, education, internet)
- Travel (car /train / bus / bike / running / walking)
- Energy sources (fossil fuels / solar / wind / tidal)

Alongside the above images, each participant was provided with a blank sheet of A3 paper and art materials including pens, pencils, coloured card, scissors and glue or blu-tack.

The task was introduced by officers and all participants were asked to use the materials to answer the key question:

Thinking about where you want to live in the future, what would your dream life look like?

The following questions were used as prompts to facilitate discussion and aid in selecting images:

- Which of these images do you like or mean something to you? Why do you feel this way about the image?
- Which images mean the least to you and why?
- Which images would you like to see in your local area?
- What would be your dream job when you are older? What does your area need to provide for you to have this job?
- How do you picture your home in your dream life?

Officers discussed the collages during the exercise and at the end, the completed collages were either collected by officers or photographed by officers.

The aim of the task was to understand which topics were a priority for this age group and to begin gathering feedback on what participants view as desirable in terms of future development. The activity produced a visual representation of these key themes.

Task 2 – Map Your Borough

The second task sought to ask participants to consider the key themes relating to development and use a map of the Borough of Havant to design their version of the future development of our area.

This task was conducted within groups of approximately 5 – 8, with a single map produced by each group.

Officers introduced the task by asking participants to consider what they feel is important to include when thinking about the future development of their area. This was accompanied by an explainer on development and prompts for specific factors, such as types of housing, employment spaces, environmental protection and elements of infrastructure.

Participants were then asked to use materials provided to create a visual representation of how they would develop the borough in the future.

The materials provided included:

- Paper house models from Ikea – these were pre-constructed to provide a visual representation of physical buildings in the borough. Some of the models were pre-labelled with examples of physical buildings, such as housing, offices, retail or places to visit), while others were left unlabelled and participants were encouraged to label them as required.
- Unused photos from Task 1
- Pens, pencils and coloured paper

The following questions were used as prompts to facilitate discussion and aid the activity:

- What do you want to see in your area in the future? (Future – 2040)
- What is the highest priority for you and this area in the future?
- What is the lowest priority for you and this area in the future?
- What areas are most important to you now and why?
- What areas are least important to you now and why?
- What will be important for you to have in our area and why?
- What places do you like going to and why?
- What do you think is missing from your area?

Specific elements of future development were also referenced by officers, who asked participants to plan specifically for the following:

- Housing
- Places to work
- Places to visit
- Green space
- Biodiverse spaces
- Transport links, including roads, railways, cycle links and other public transport connections
- Leisure facilities

Officers discussed the choices made by participants during the exercise and at the end, the completed maps were photographed by officers.

4. Youth Engagement Programme

Following contact with all schools in the borough, the local college and youth-focused economic development initiatives, the following schedule of youth engagement sessions was conducted:

Date	Group	Age information	Number of attendees
25/03/2025	Empower You Group*	16 – 24 years old	7
02/04/2025	Purbrook Park School, Waterlooville	Year 10 pupils (14-15 years old)	30
03/04/2025	Havant and South Downs College	Business and Construction students (aged 16+)	30
10/04/2025	Youth Hub users**	16 – 24 years old	7
22/04/2025	Park Community School	11 – 16 years old	30
23/04/2025	Cowplain School	Year 9 pupils (13-14 years old)	30
29/04/2025	Crookhorn College	Year 7 pupils (11-12 years old)	30
14/05/2025	Empower You Group*	16-24 years old	5

* Empower You is an Economic Development initiative to support a cohort of young people in securing skills to join the workforce.

** The Youth Hub is an Economic Development initiative to support young people in securing employment or further education / training.

5. Consultation Findings

The following sections provides the findings of the activities conducted with young people to support the development of the Building a Better Future Plan.

The first section provides an overview of the feedback given by participants across both activities, broken down by key theme.

The second section provides an overview of the feedback gathered during the mapping exercise for each of the borough's key geographic areas.

5.1. Findings by key theme

This section provides an overview of the feedback given by participants across both activities, broken down by key theme.

The natural environment

- The natural environment was the key topic and priority raised by participants across both activities.
- In the dream life collage activity, pupils consistently selected images of natural spaces, flora and fauna when putting together the vision for their dream future.
- Particularly when considering their dream home, regular themes including being situated near trees or woodland, being surrounded by wildlife and being surrounded by flowers were raised across the age groups engaged. Some also referenced being near open space or having a large garden.
- This contributed to a consistent point of their dream lives being related to an enhanced and strong natural environment.
- This also extended to being situated near the sea, with a number of respondents additionally commenting on being close to or living on the seafront with a vibrant beach setting.
- Similarly during the mapping activity, themes on or relating to the natural environment were the most commonly referenced themes when considering the future of the borough.
- Comments relating to the natural environment were again common amongst participants and though prompt questions were asked concerning this topic, pupils consistently identified this as a priority and this was often key amongst themes that informed their design of the borough in the future.
- One of the top priorities identified by this exercise was the need to support and protect natural spaces within the borough, with all groups indicating that this was a top priority.

- The methods through which the natural environment was protected differed between groups, evidencing varying measures to accomplish this goal.
- For many, specific areas within the borough were designated as 'natural' areas and were therefore excluded from consideration for development. In most forms, this came as physically drawing a boundary on a section of the map and giving this area protection from any additional development.
- For many groups, these areas linked to locations with existing natural environments – examples included Staunton Country Park, Emsworth and Hayling Island.
- For others, this was expressed in the form of planting trees or plant life in locations across the borough. This was both seen as a way of enhancing areas with existing trees (e.g. Staunton Country Park, Waterlooville) or as creating newly planted areas in the borough (e.g. suggested sites on Hayling Island).
- Trees were the most common specific response as a potential measure to support the natural environment (not including non-specific responses such as 'provide natural areas'.)
- Many responses labelled parts of the borough as 'green' or 'open' spaces, mirroring a theme raised in the previous part of the exercise.
- These again were referenced both in relation to existing spaces in the borough, while also certain new areas were designated as 'green' or 'open' spaces to improve the natural environment in the borough.
- New spaces identified for open space were often on Hayling Island, as discussion highlighted issues relating to flood risk and developing at this location, leading many groups to consider Hayling for more natural purposes, such as green space or for the planting of new trees.
- Wildlife was another commonly referenced theme, with a number of groups designating space within the borough for animal-related measures. Suggestions mainly concerned the potential establishing of a nature reserve or protected space for animals to live outside of areas for development, while other more specific examples included animal sanctuaries or animal-themed attractions (e.g. cat café, dog parks).

Renewable energy

- The production of renewable energy was a topic that was referenced and prioritised by groups across both activities, linking in with the environmental focus identified above.
- During the collage exercise, a high proportion of participants chose pictures of renewable energy sources for their dream home.

- Solar panels was the main choice but pupils also referenced wind power and renewable energy more generally within their responses.
- From discussions with those taking part, it was clear that this was seen as a crucial factor in ensuring that the natural environment for their dream life was enriched and thriving.
- It was also felt that renewable energy sources would be more suitable to their desire to have a peaceful or calm environment to live in, and would also lead to less air and water pollution.
- With the topic having been discussed as part of the first activity, many participants identified areas in the borough to dedicate to renewable energy production during the mapping exercise.
- Discussions revealed that this was a key concern for many young people and these participants were eager to ensure that renewable energy production was a factor in the future design of the borough.
- In most cases, this came through as areas reserved for solar or wind energy, with examples of areas given both on and off of the mainland for these purposes. Many indicated that they would be in favour of, for example, using offshore locations for wind turbines, or dedicating areas at risk of flooding for solar panels.
- In particular, Hayling Island was seen as a key location to be dedicated for energy production as many groups understood the limitations for broader development of this site.
- These often came in the form of larger scale sites, with reference made to solar panel and wind farms as a shorthand for sizeable locations used for these purposes.
- In addition to dedicated areas, a number of participants referenced building new development with higher standards for renewable energy, with suggestions including the inclusion of solar panels on all new housing or wind turbines within the urban area.
- Though to a lesser extent, some groups also suggested that they would investigate opportunities for tidal power to be created as the borough has a broad coastline.

Living (section includes feedback on housing, health and employment)

Housing

- Participants were prompted to think about the future of housing by both activities.

- When thinking about their dream home in the first activity, respondents were more likely to identify photos of larger detached homes of a higher quality as their dream home.
- While there were some participants who preferred to be living in or near a city environment, more pupils indicated that they would like to live in a more rural or countryside setting.
- When thinking about their dream home, descriptive language used by pupils often referred to being in a peaceful, relaxing and calm environment, linking in with themes of being within a flourishing natural environment and being near open space.
- Many participants were non-specific when considering the layout or style of their dream home, with roughly equivalent levels of pupils selecting homes of modern and traditional styles.
- Within the mapping activity and during discussions with facilitators, groups consistently dealt with the question of housing by selecting similar areas for further development and signalling a support for higher density development.
- When discussing housing and designating space for housing during the mapping exercise, locations in Waterlooville and Leigh Park were often the most common areas chosen.
- In some cases, it was clear that this was due to the urban nature of these locations and the fact that these areas are already highly developed, with pupils suggesting that development may be more appropriate in these locations.
- When challenged on the number of homes that the borough is required to accommodate for according to central government housing targets, a number of groups suggested providing higher density housing the above areas by stacking housing on top of housing within the existing urban area.
- Discussions with these groups revealed an openness to considering higher density housing such as flats or apartments, as this would provide a greater number of homes without taking up land that was already seen as scarce within the borough.
- In addition, many groups initially designated areas near the borough's coastline for further development but often then re-sited this housing once they had been informed about challenges with flood risk.
- Groups were largely in agreement that housing should not be provided in areas at risk of flooding, though some gave creative solutions to allow for development to take place in these locations, such as houses built on heightened land or houses built in the water surrounding Hayling Island.

Health

- Groups were also asked for their views on supporting the health and wellbeing of those living in the borough.
- Suggestions to support the health of residents included construction of hospitals within the borough, though participants gave differing views on where these should be situated to most effectively help residents.
- Some groups felt that an enhanced health facility should be situated in central Havant, as this represented the most central location within the borough. These participants felt that this meant that access to healthcare was equal to all residents as travel times should be roughly equivalent.
- Other groups felt that healthcare facilities should be placed close to road networks so that they could be accessed more effectively, meaning that a hospital was placed in the Waterlooville area due to the connections to the A3 motorway.
- One group chose to place a new healthcare facility near to the coastline on Hayling Island, arguing that this was needed so that those living on Hayling Island had easy access to this facility without needing to travel far or use the single access road to the mainland.
- In relation to health, many groups also referenced that the focus on protecting and enhancing the local natural environment would have the positive consequence of improving the health and wellbeing of those living in the area.
- Measures including more open spaces, improved parks and dedicated natural areas within the borough would allow residents to experience the benefits of these surroundings on their physical and mental health, therefore making for healthier communities.
- This was also reflected in the collage activity, where a number of participants selected images that promoted a greener borough that encouraged healthier lifestyles via access to open spaces.

Employment

- The collage activity led to a level of discussion on employment amongst participants.
- When asked what their dream job would be for the scenario, the most common response was in relation to animals, with job titles such as 'marine biologist' and 'vet' referenced in response alongside the more general 'animals'.
- Developments for employment usage were rarely referenced by participants and this point was discussed further within the mapping activity, where groups recognised the importance of providing work spaces for those living in the borough and designated particular areas for this purpose, most notably within the existing urban area.

Leisure and recreation

- Many provided a number of suggestions or ideas of activities to do in the local area across both activities.
- There were a number of points raised by participants that were related to the leisure and entertainment offer in their dream life collages, as they selected images that provided various activities that they wanted to engage in in the future.
- The most referenced example of this was for shops or shopping centres, with participants often writing this as a key requirement for their dream life.
- Many selected images depicting their favourite sport or recreational activity, as pictures showing football pitches, cycling or people on countryside walks were chosen by participants.
- Other popular past-times referenced included having more parks in their dream area, wider availability of books or libraries, and places to eat.
- This was mirrored in the design of the borough for the future during the mapping exercise, as there were a variety of suggestions received for places or activities for leisure and recreation, ranging from more low-key or natural suggestions to more development-focused ideas.
- In terms of more natural solutions, many comments referred to green or open spaces to visit, with discussions suggesting that many would like to have peaceful places to visit that are local to them.
- Alongside these, many indicated that they would like to see a park or parks in their local area, while other facilities such as sport pitches were often referenced within the activity.
- Some ideas given were more focused around the development of the built environment, with a cinema being a common suggestion. Others included places to eat (such as cafes, restaurants or fast food outlets), leisure centres or a theme park.
- On a more general note, a number of participants referenced the provision of free or low-cost activities, as well as providing activities for families.
- There was also a geographic focus around Hayling Island, with many suggesting that the seafront area could be used for recreational purposes, with ideas including piers, arcades or bigger developments such as a cinema or shopping centre.

Transport

- One of the areas where participants were very creative was in the consideration of public transport, with many groups suggesting new and innovative ways to connect areas of the borough.
- The majority of the participants within this age group did not have access to their own private vehicle, and this was reflected by the number of ideas relating to public transport received.
- A number of the ideas were dynamic and innovative solutions to the issue of access onto Hayling Island, with many groups suggesting ways to improve how residents were able to travel between the mainland and Hayling Island.
- Suggestions included extensions of the current rail network to provide a service to the south end of Hayling Island, underground train systems (modelled on the London Underground or Channel Tunnel) or water-based / over-sea trains. In most cases, these were clearly identified as electric or renewable energy based systems.
- These were seen to have the co-benefit of providing better access to locations across the borough, while also being more environmentally friendly and (in the case of underground or sea-based networks) freeing up space on land for development.
- Other more specific suggestions given by participants included a bridge to connect Emsworth to Hayling Island, the extension of the mainland to connect to Hayling Island or improvements made to the bridge connections to Hayling Island.
- A number of groups also provided other water-based public transport solutions, including an enhanced boat connection with surrounding areas such as Portsmouth or a ferry port situated on the coast of Hayling Island.
- Improved bus networks were also referenced by a number of groups.
- Other groups also referenced measures to reduce car usage through schemes such as Park and Walk or Park and Ride networks.
- In terms of private vehicles, reference to these was rarer but when mentioned, there were comments suggesting that EV charging points could be introduced to encourage greater electric vehicle usage or, on more general terms, the borough should encourage the use of greener transport, including electric cars alongside public transport and bicycles.
- Reference to transport during the first activity was not as common, though some participants did include a private vehicle within their dream life collage, with others making more general references to the availability of public transportation. There were a small number of references to electric vehicles and EV charging points.

5.2. Findings by geographic area

This section provides an overview of the feedback gathered during the mapping exercise for each of the borough's key geographic areas.

Waterlooville and surrounding areas

- Waterlooville was recognised as one of, if not the main, urban area within the borough and the future design of Waterlooville reflected this.
- All groups designated Waterlooville as an area for the further development of housing – this was due to the highly developed character of the area, easy connection to the existing urban area and proximity to the strategic road network.
- A number of groups went further and designated Waterlooville as an area suitable for higher density development, with many suggesting that flats or apartments could be constructed.
- In order to support the indicated level of development, Waterlooville was also chosen by many groups to be the location for increased services (including schools, colleges and police), commercial premises (including offices) and health services, including the construction of a new hospital.
- Participants felt that with a large community living in this area, there should be a greater availability of things to do – suggestions included a bowling alley, cinema, gym, dance studio or football stadium, while others also stated that there should be places to shop in Waterlooville.
- It was also seen as important for natural areas to be provided throughout the borough, even where Waterlooville was seen as a mainly urban area. Ideas to ensure that Waterlooville had these spaces included the siting of green or open spaces within new developments, parks, pitches for sports, a fishing lake, farmland areas and a historic garden walkthrough.

Leigh Park

- Leigh Park was again recognised as being part of the existing urban area and many groups indicated that housing was a key focus for this part of the borough.
- Again a number of groups indicated a support for higher density housing, with stacked housing being used to signal flats or apartments being constructed in this area to provide more housing without using as much land to provide.
- There was a strong recognition of the natural value of Leigh Park, specifically relating to Staunton Country Park.

- Participants were keen to foreground this area and protect it from further development, with some going further by designating this area as a nature reserve or protected green space / forest.
- This further influenced the future design of Leigh Park, with a number of groups putting green spaces, trees or natural areas throughout this location.
- When considering Leigh Park Town Centre, participants indicated that they would support an improved town centre with ideas including a greater number of fast food outlets and increased shopping.

Havant and Bedhampton

- The Havant and Bedhampton areas were also recognised by participants as being part of the established urban area and were therefore felt to be suitable for housing.
- As with other developed areas, participants were open to a higher density of housing, with flats and apartments referenced as solutions that provide more homes to meet targets as well as not taking up more land space.
- Discussions also highlighted that Havant was a key location for commercial activities within the borough, and therefore groups were supportive of providing commercial space within this area.
- Havant was also seen as a public transport hub within the borough, with the main links via road, rail and bus situated in the town. Suggestions from groups sought to enhance this by using Havant as the base for many of the innovative ideas for public transport in the borough for the future, with Havant as the base for enhanced rail networks (including extensions to the current rail network, underground systems or sea-based networks) as well as improving current public transport links.
- As was the case with other areas, groups also designated parts of Havant and Bedhampton as natural spaces, with focus on planting trees throughout these areas or providing parks.

Emsworth

- When considering Emsworth, participants were less focused on providing housing and more on protecting the natural environment as well as producing renewable energy.
- While some groups did designate the Emsworth area for housing, others were more hesitant to place housing at this location. This was mainly due to the natural character of Emsworth as well as being closer to the coastline and being a smaller area than other parts of the borough.

- Emsworth was used by many for a higher concentration of natural areas, including green or open space as well as tree planting, while some also stated that this area should be protected for farmland.
- Others dedicated this location to renewable energy production, with many suggesting wind turbines to be used both in Emsworth and in the water surrounding Emsworth.
- This area was also used by some participants as the base for more innovative ideas for public transport, with links from Emsworth to Hayling Island via an over-sea train, enhanced rail network or bridge connection suggested by participants.
- Emsworth was also seen as being in need of more things to do, with ideas put forward including a cinema, more parks or a theme park.

Hayling Island

- Hayling Island was often the most discussed location within the borough when engaging with groups of the future of the borough.
- Though many felt initially that housing on Hayling Island was seen as appropriate and desirable, discussions relating to flood risk and access meant that most groups felt that further development on Hayling Island was not suitable.
- This was due to the risk of homes being flooded. Some groups did put forward ideas to allow development while being considerate of the flood risk, such as homes built on higher ground or with increased flood defences, while other groups dedicated areas of the coastline for coastal defences, but on balance participants were minded to focus development in other areas of the borough.
- Instead, Hayling Island was given a focus more on the natural environment and renewable energy production, while the coastline was seen as an area with a notable recreational potential.
- Many designated areas of Hayling Island as natural areas, with focus on nature, wildlife, trees and undeveloped land taking up notable sections of this location. This was recognised by many as the character of the island and therefore it was felt that this should be protected and enhanced.
- Alongside this, many areas on Hayling Island (and in the surrounding waters) were designated for renewable energy production, both for solar and wind power. This was a common suggestion by a number of groups, with Hayling Island often the focus for these areas.
- However alongside a more natural or undeveloped focus for much of Hayling Island, many groups focused on the coastline of Hayling Island to provide a recreation and entertainment attraction for the borough.

- Similar to neighbouring areas such as Southsea, many groups indicated that the seafront could be used for piers, arcades, shopping, water sports, a funfair or restaurants, therefore providing more things to do in the local area. The seafront was seen as the chosen location due to being a desirable coastal site and being excluded from housing development due to flood risk.
- It should be noted that while many groups suggested an entertainment offer on Hayling Island, participants did make clear that they wished to protect the natural character of Hayling Island.
- Access to and from Hayling Island was another common discussion point with groups, with suggestions including an extension of the rail or bus networks to include routes to the south of Hayling Island or water-based solutions such as over-sea trains or boat links to the mainland.

6. Next Steps

The findings from the youth engagement for the Building a Better Future Plan consultation will be considered alongside the wider consultation findings, and be used to shape and influence the final Local Plan.

The engagement was felt to be successful and the council will continue to seek opportunities to engage with younger people on key corporate projects.