

Legend

Boundaries

Redline boundary

Baseline Habitats

Baseline Trees

Small >7.5cm to 30cm

Medium >30cm to 60cm

Large >60cm to 90cm

Linear Baseline

Wet ditch

Native hedgerow associated with bank or ditch

Species rich native hedgerow with trees

Species rich native hedgerow with trees associated with bank or ditch

Baseline Habitat Area

Cropland Non cereal crops

Grassland Modified grassland

Heathland and shrub Bramble scrub

Heathland and shrub Mixed scrub

Urban Developed land; sealed surface

Urban Introduced shrub



Project Hayling Island - North Site Saltmarsh Lane

Drawing Title Habitat Features Plan

Scale Scale: 1:900

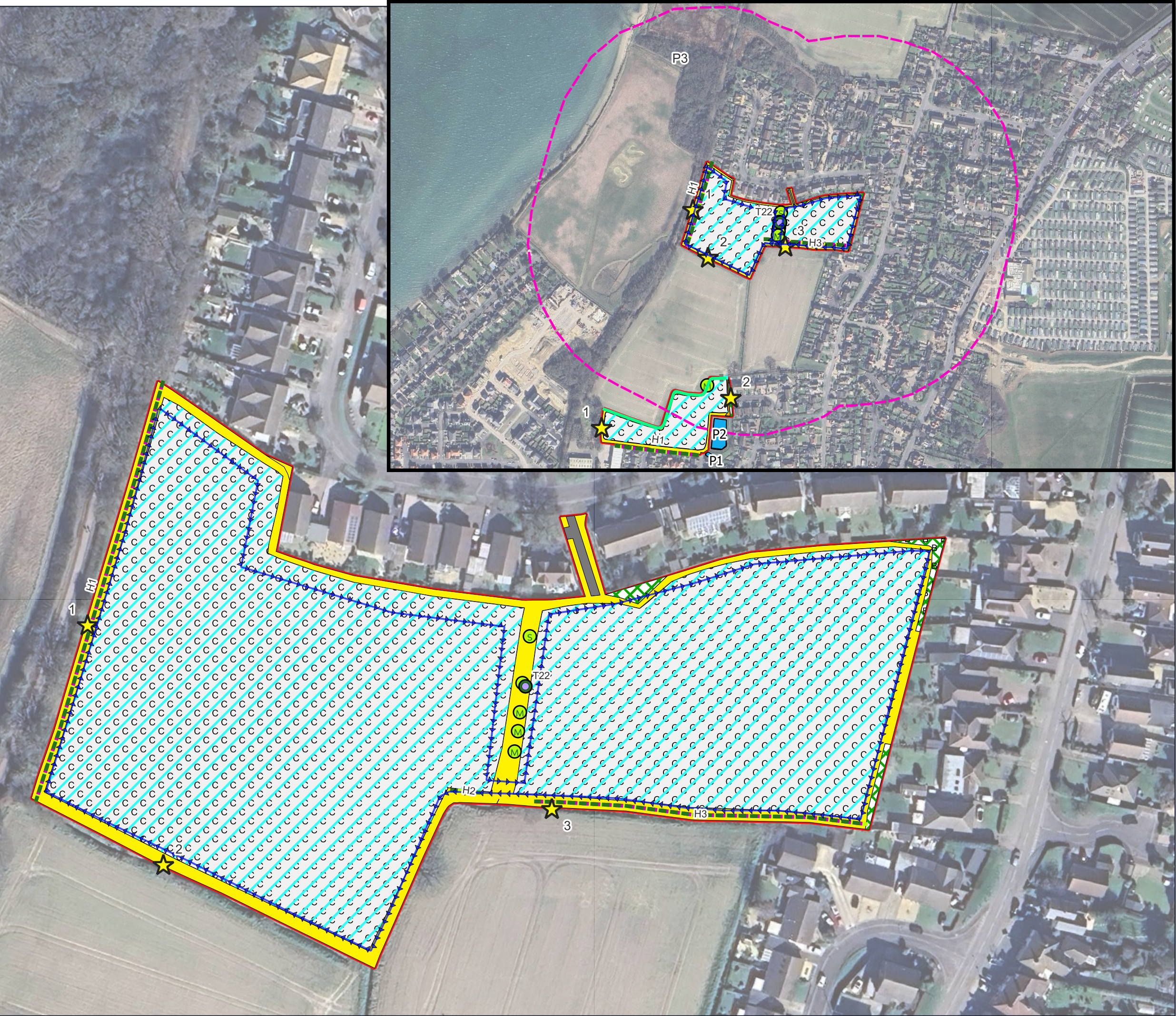
Drawing No. 13956/P23A

Date June 2025

Checked CC/AP







Legend

- Boundaries
- Redline boundary
- Baseline Habitats
- Cropland - Non-cereal crops
  - Grassland - Other neutral grassland
  - Grassland - Modified grassland
  - Heathland and shrub - Bramble scrub
  - Heathland and shrub - Mixed scrub
  - Lakes - Ponds (non-priority habitat)
  - Urban - Developed land; sealed surface
  - Urban - Introduced shrub
- Culvert
- Native hedgerow - associated with bank or ditch
  - Species-rich native hedgerow - associated with bank or ditch
  - Species-rich native hedgerow with trees
  - Species-rich native hedgerow with trees - associated with bank or ditch
- Baseline Trees
- Small >7.5cm to 30cm
  - Medium >30cm to 60cm
  - Large >60cm to 90cm
- Bat Survey Results
- Transect Route
  - Static Location
  - Further Assessment Required FAR [
- GCN Survey Results
- 250m Radius From Land South of Saltmarsh Lane, Hayling Island
  - Off-site Pond Inaccessible
  - Pond



Project	Hayling Island - North Site Saltmarsh Lane
Drawing Title	Fauna Survey Results Plan
Scale	Scale: 1:1,118
Drawing No.	13956/P25A
Date	June 2025
Checked	CC/AP



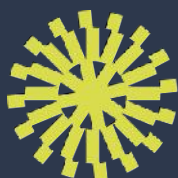
97 Icknield Street, Hockley, Birmingham, B18 6RU  
T: 0121 828 4043 E: hello@tylergrange.co.uk  
W: www.tylergrange.co.uk





# Step into our world

[www.tylergrange.co.uk](http://www.tylergrange.co.uk)



Tyler  
Grange

Landscape | Ecology | Arboriculture