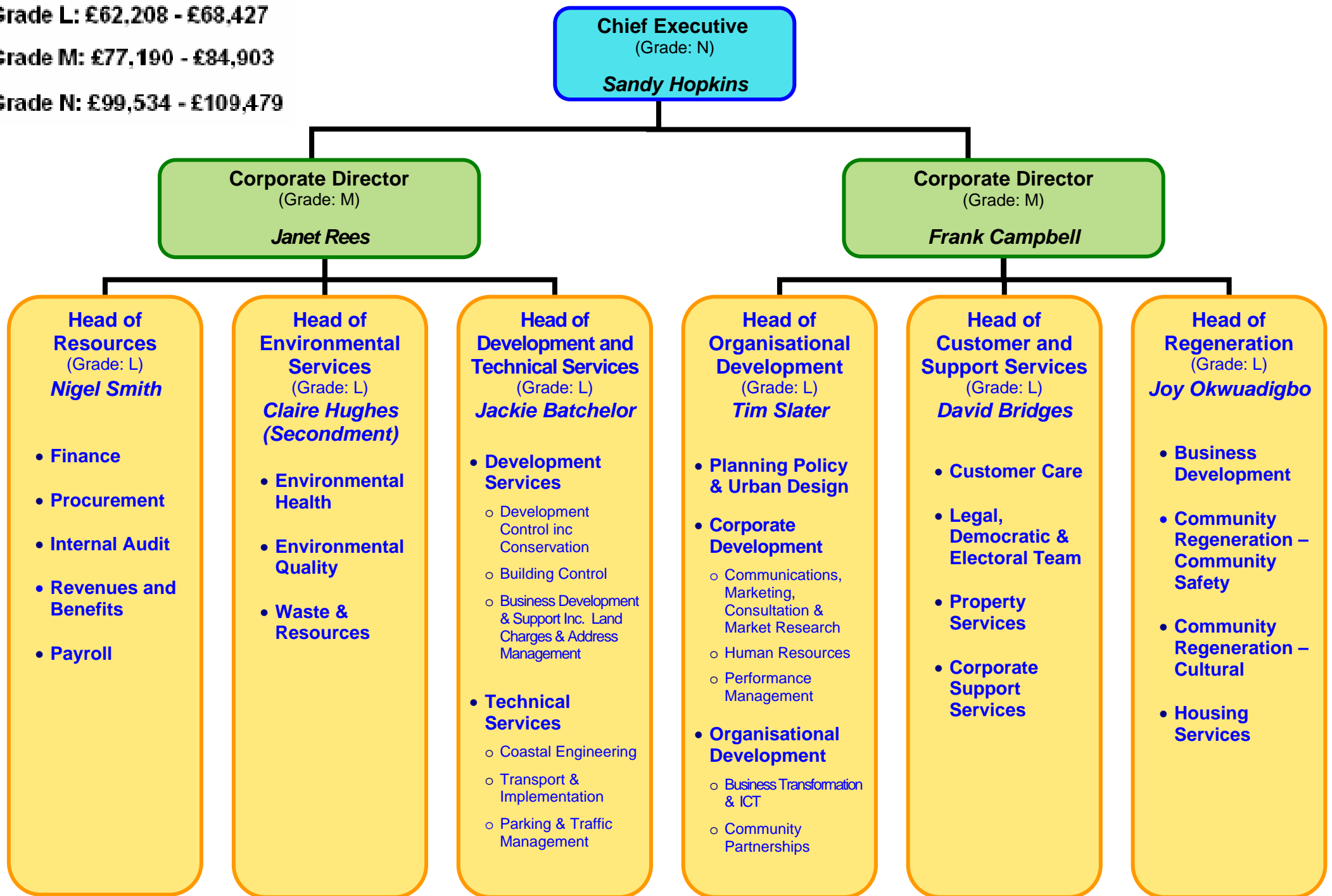
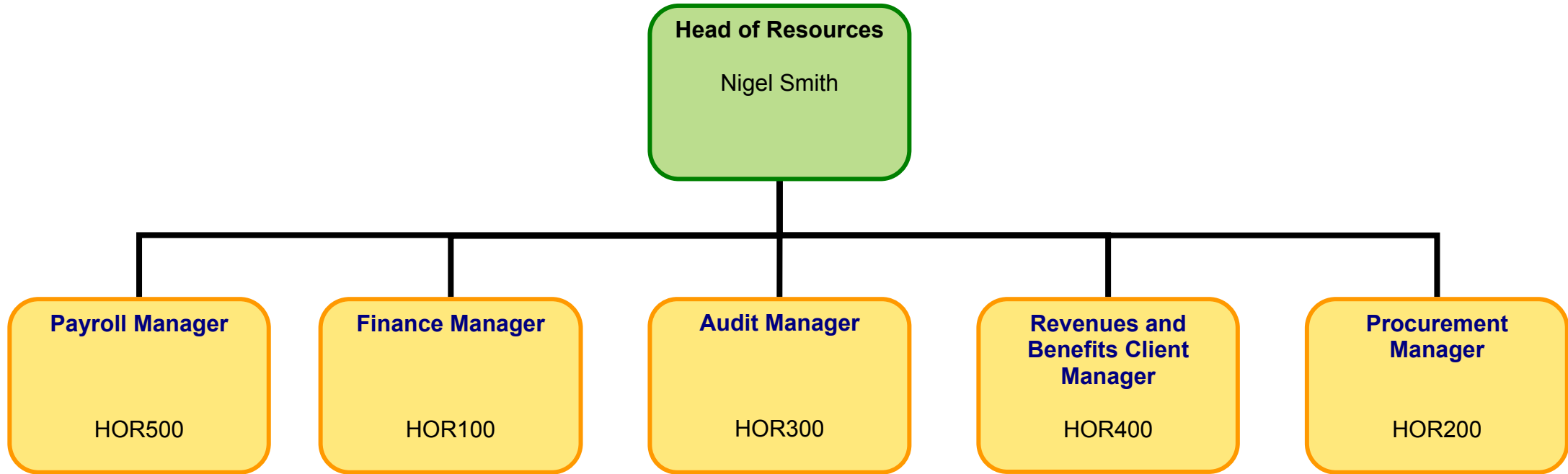


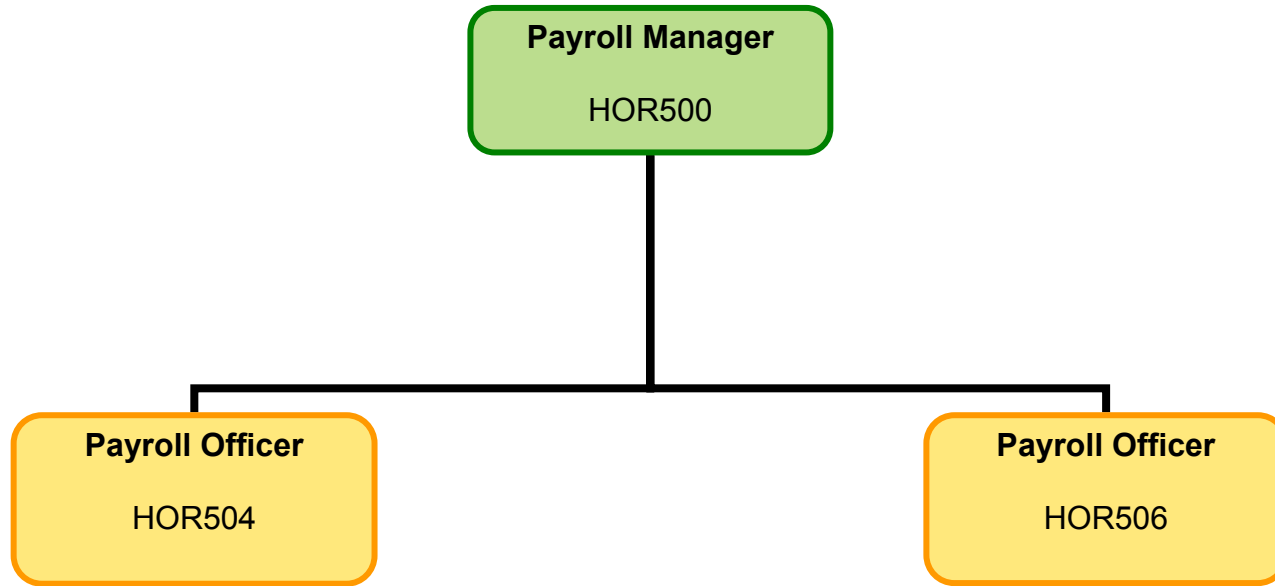
**Grade L: £62,208 - £68,427**

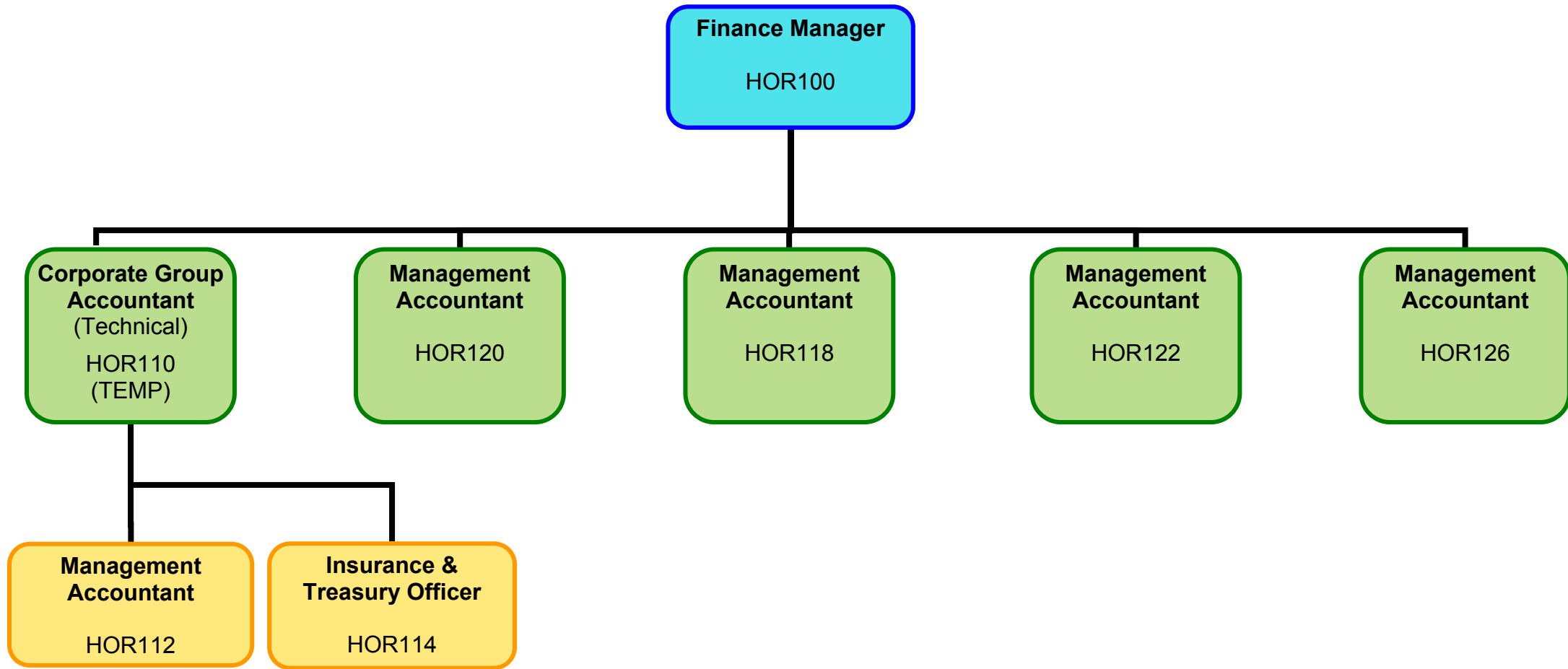
**Grade M: £77,190 - £84,903**

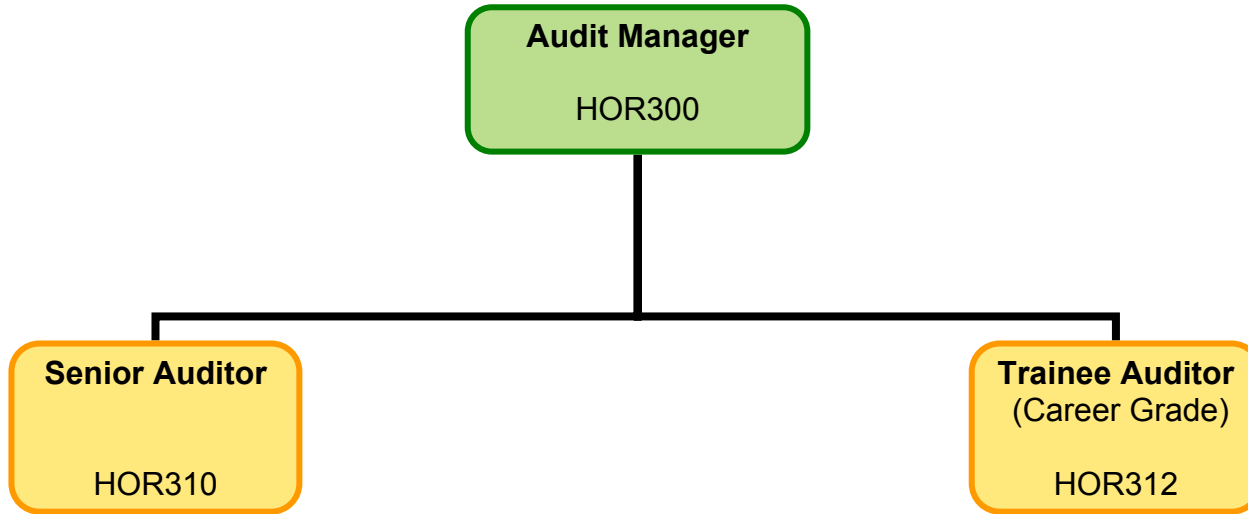
**Grade N: £99,534 - £109,479**

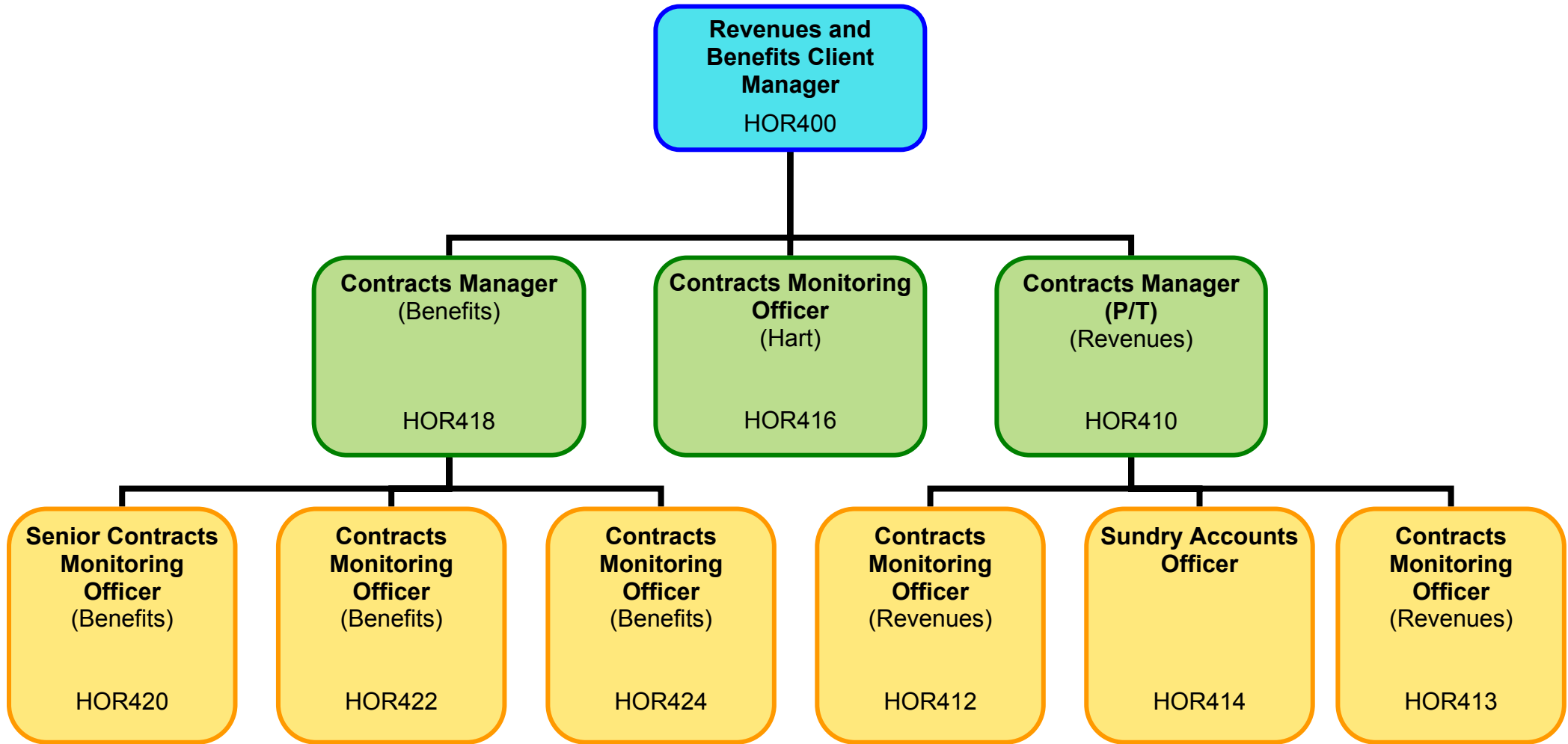


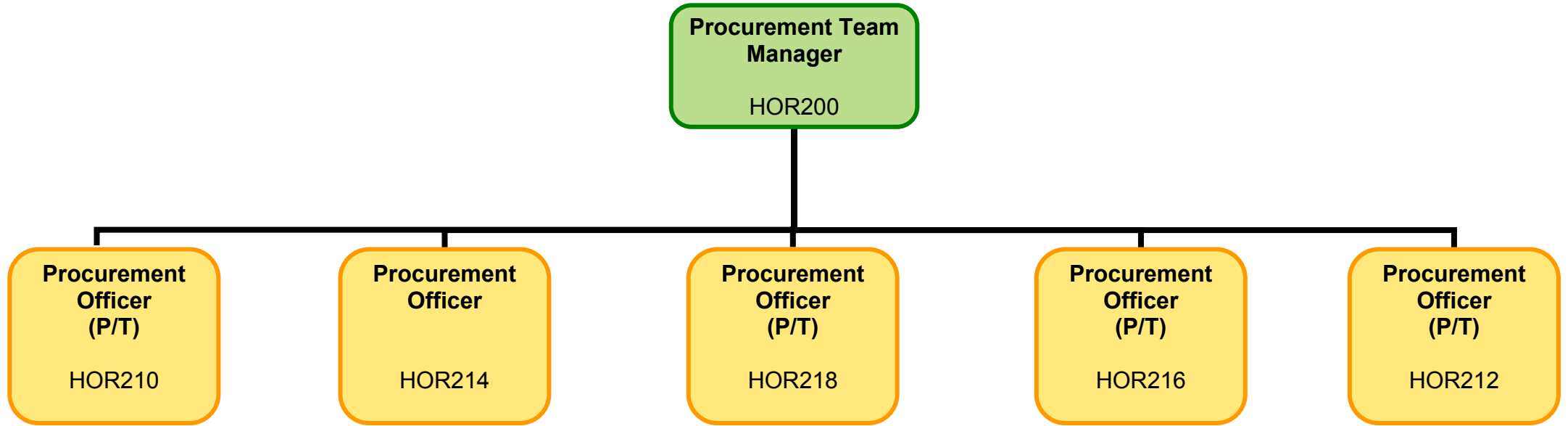


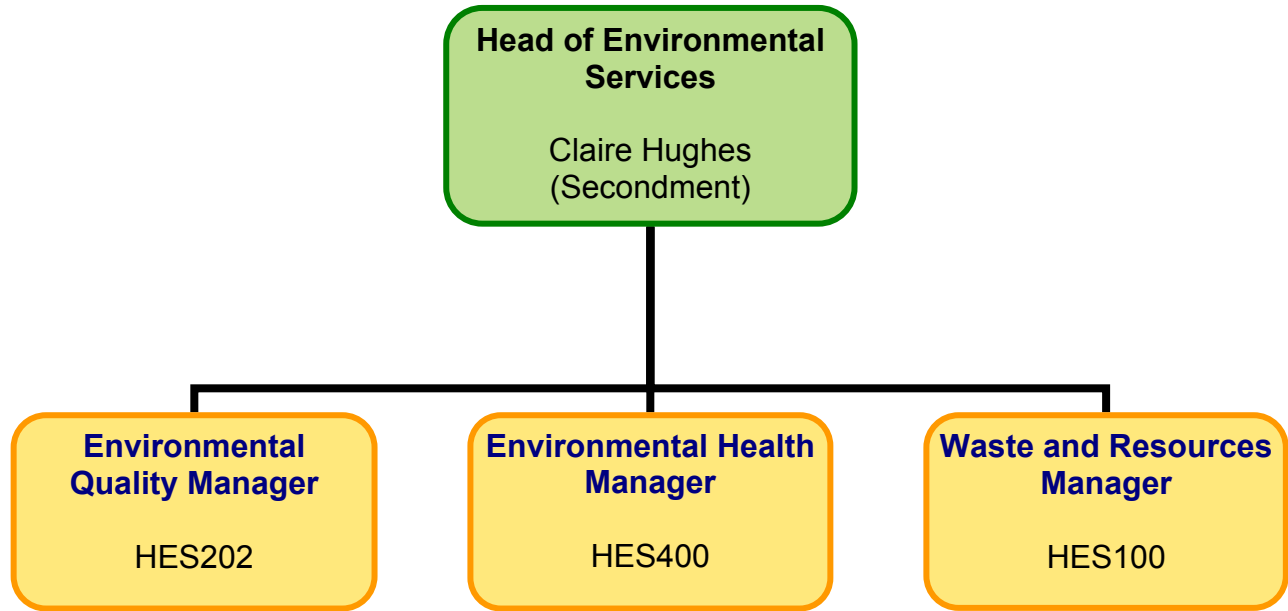


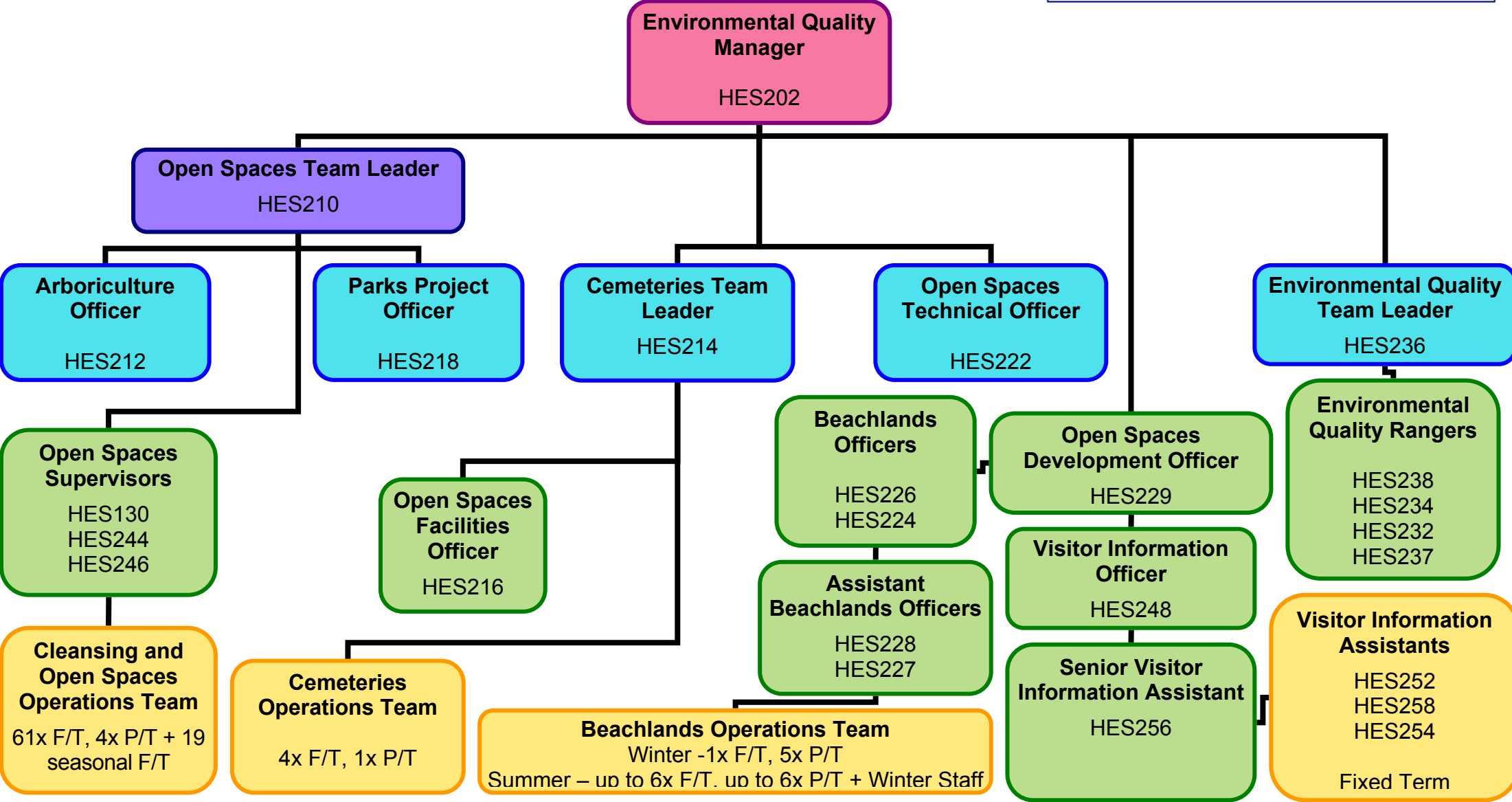


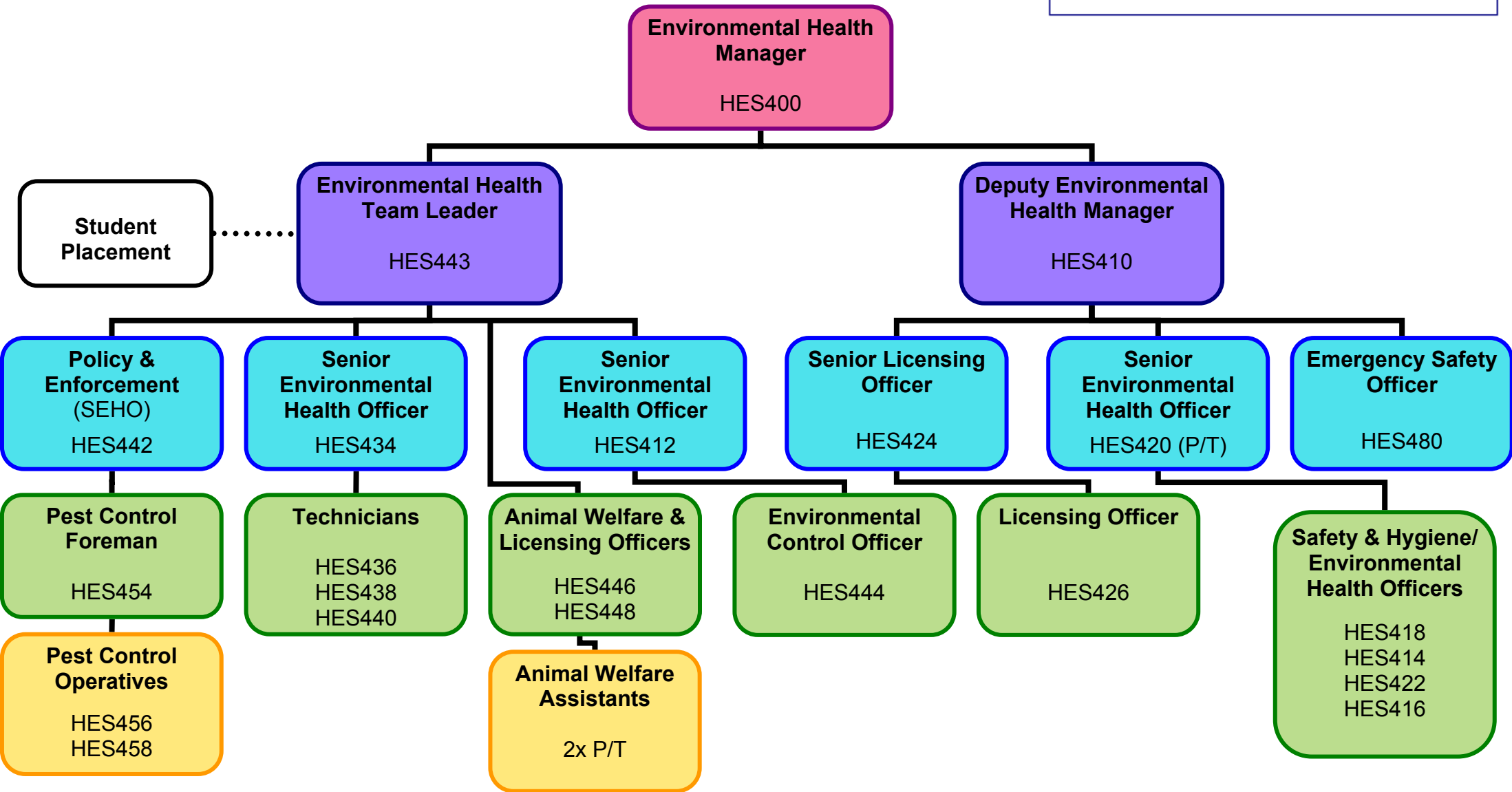


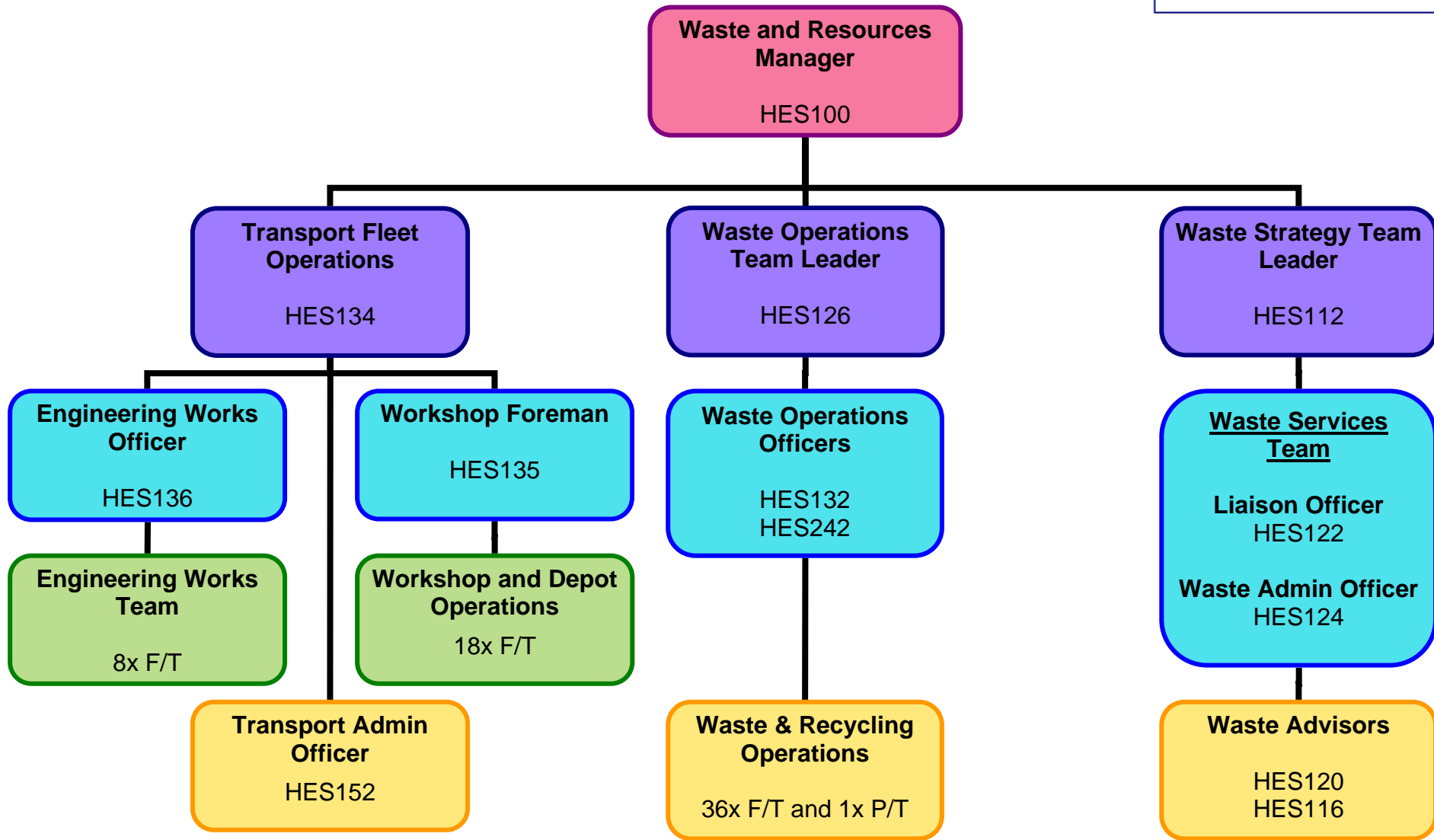


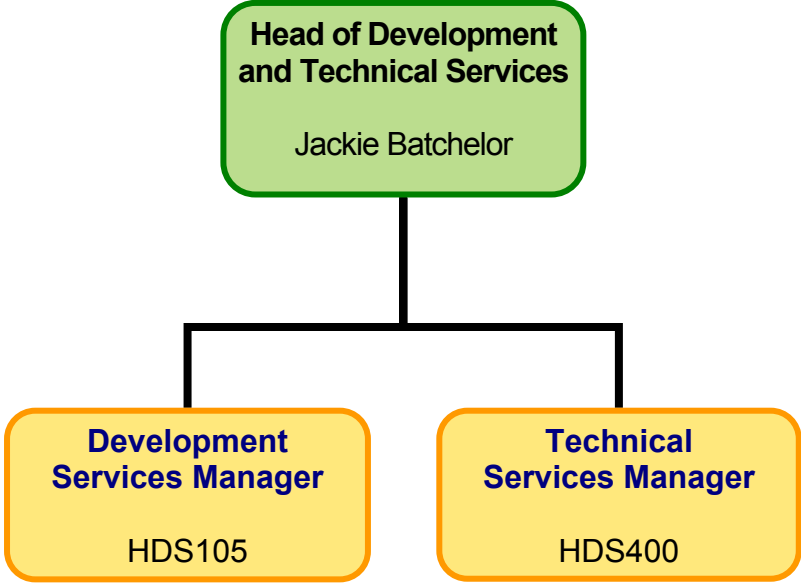


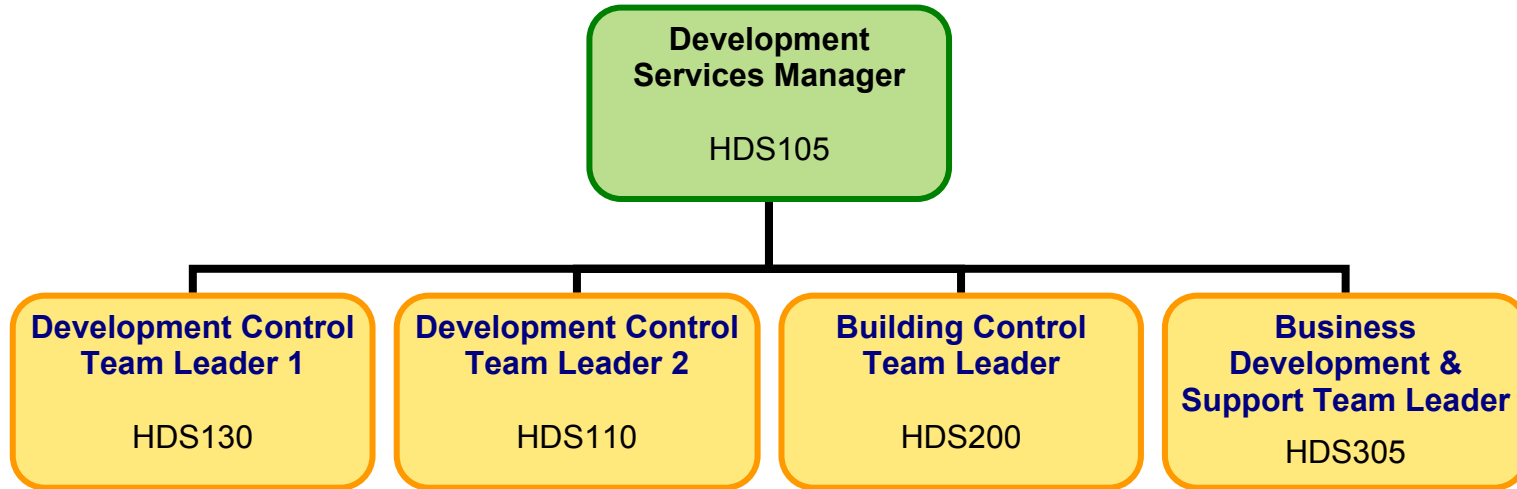


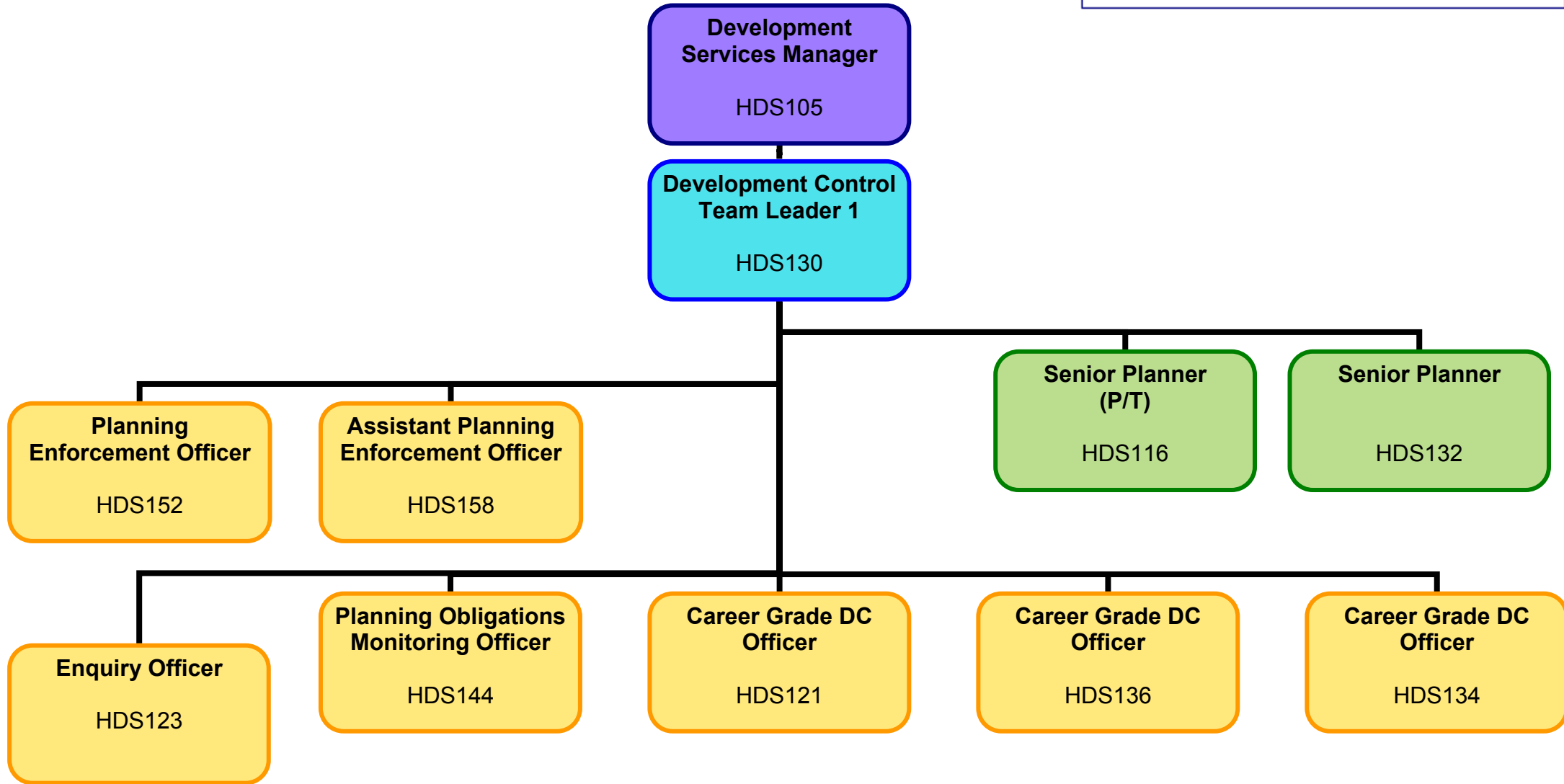


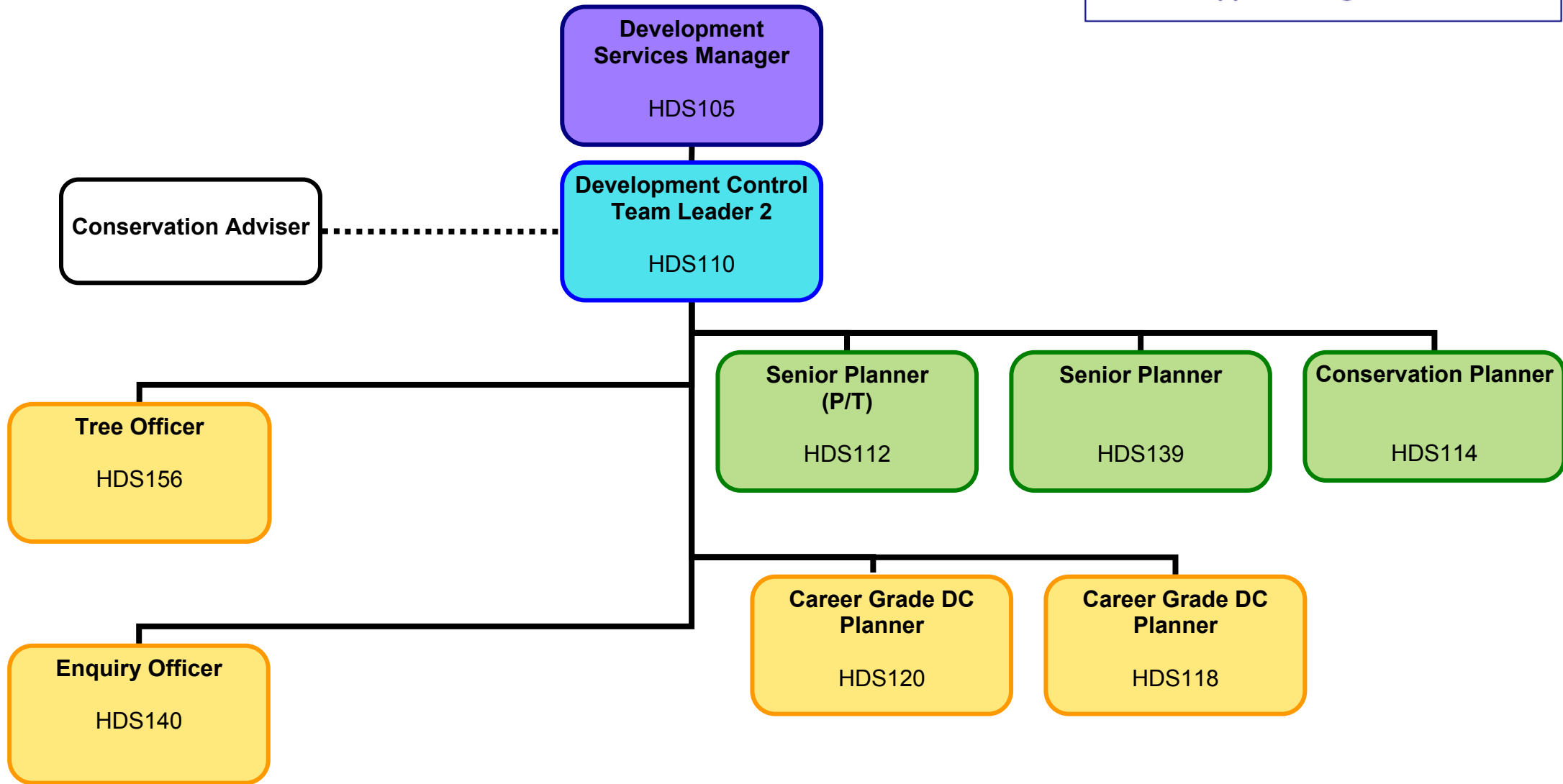


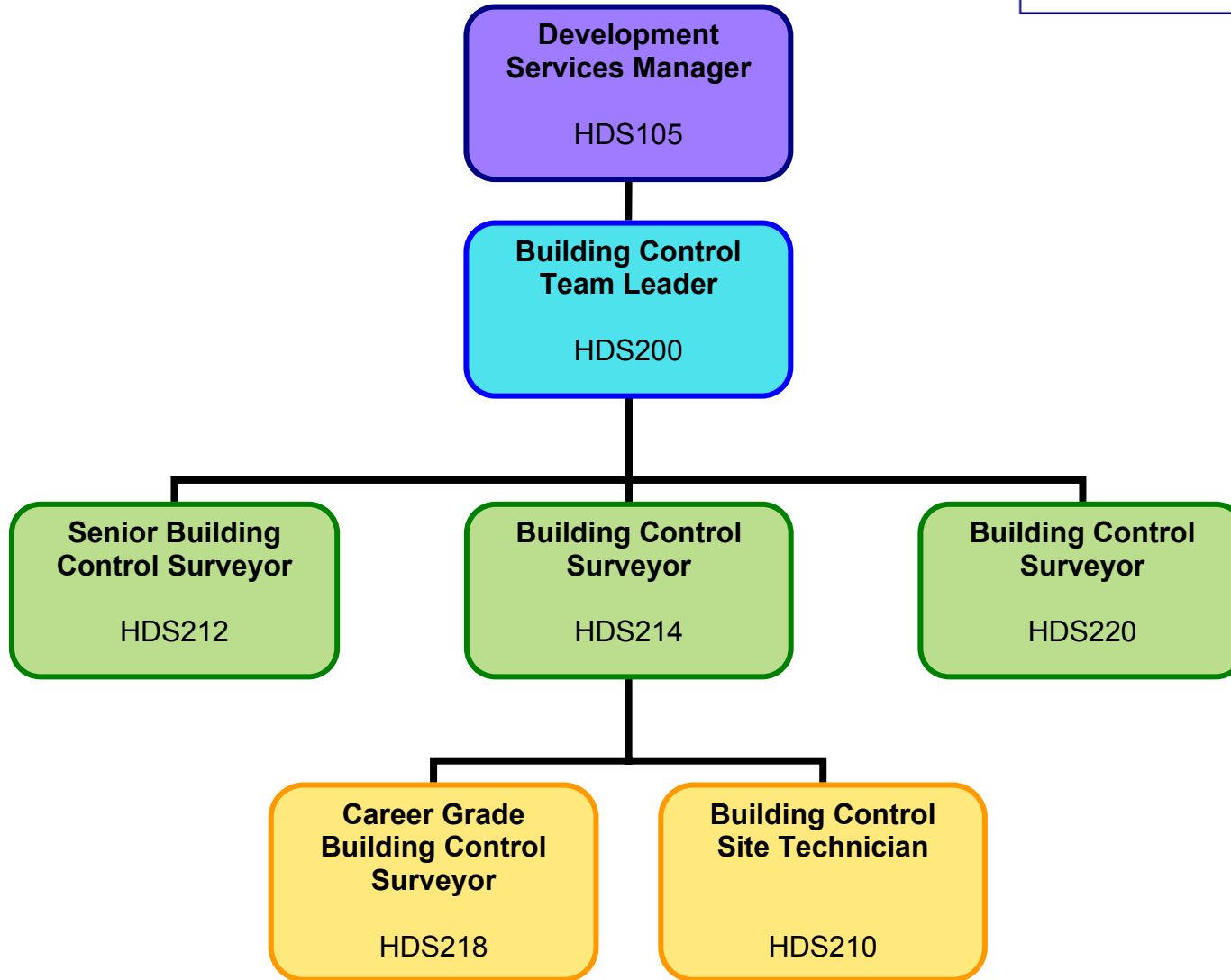


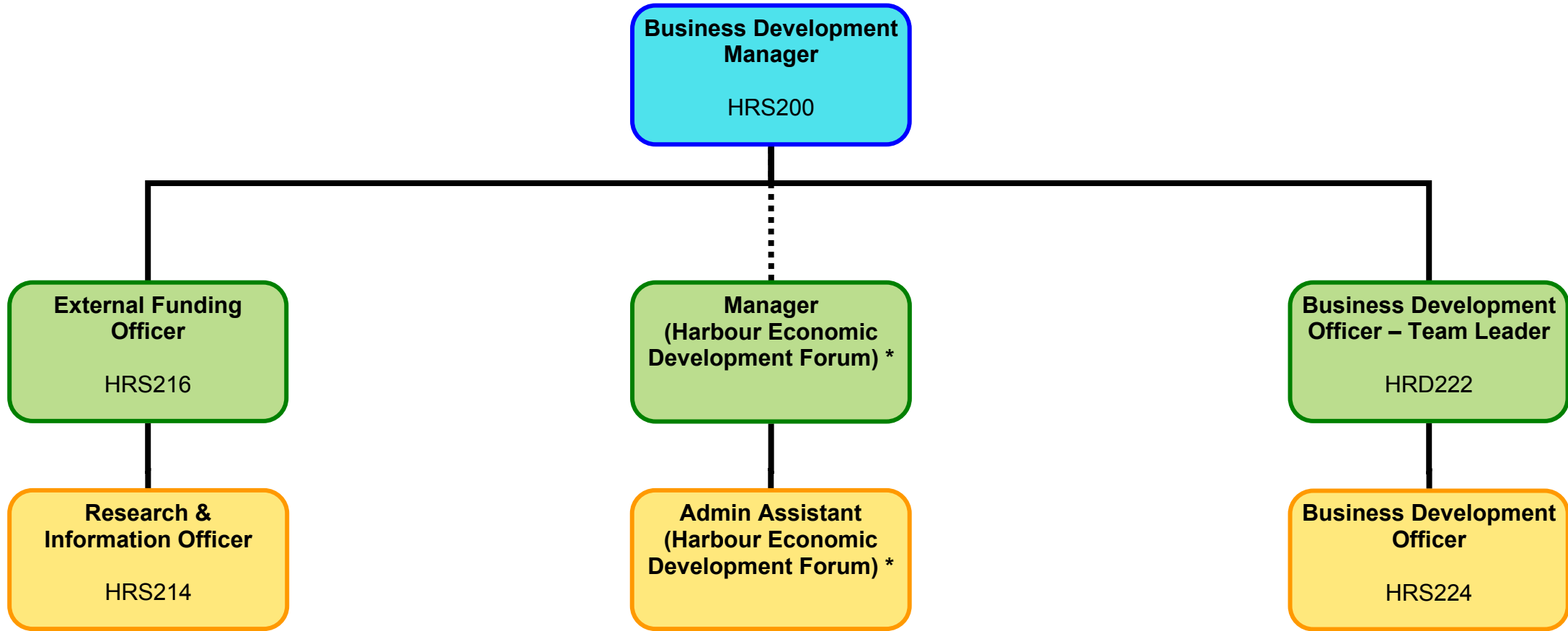




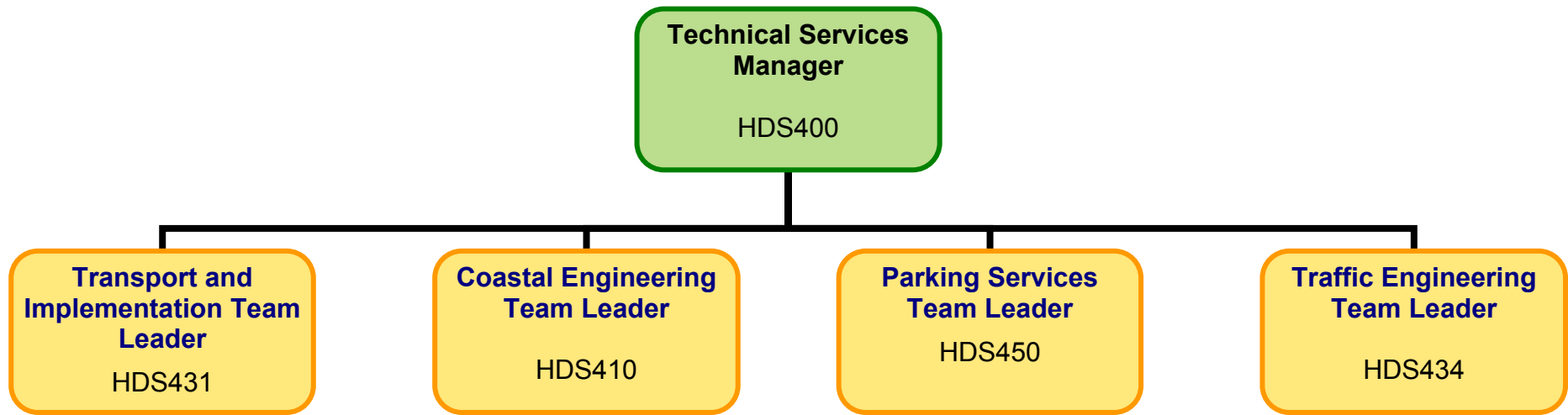


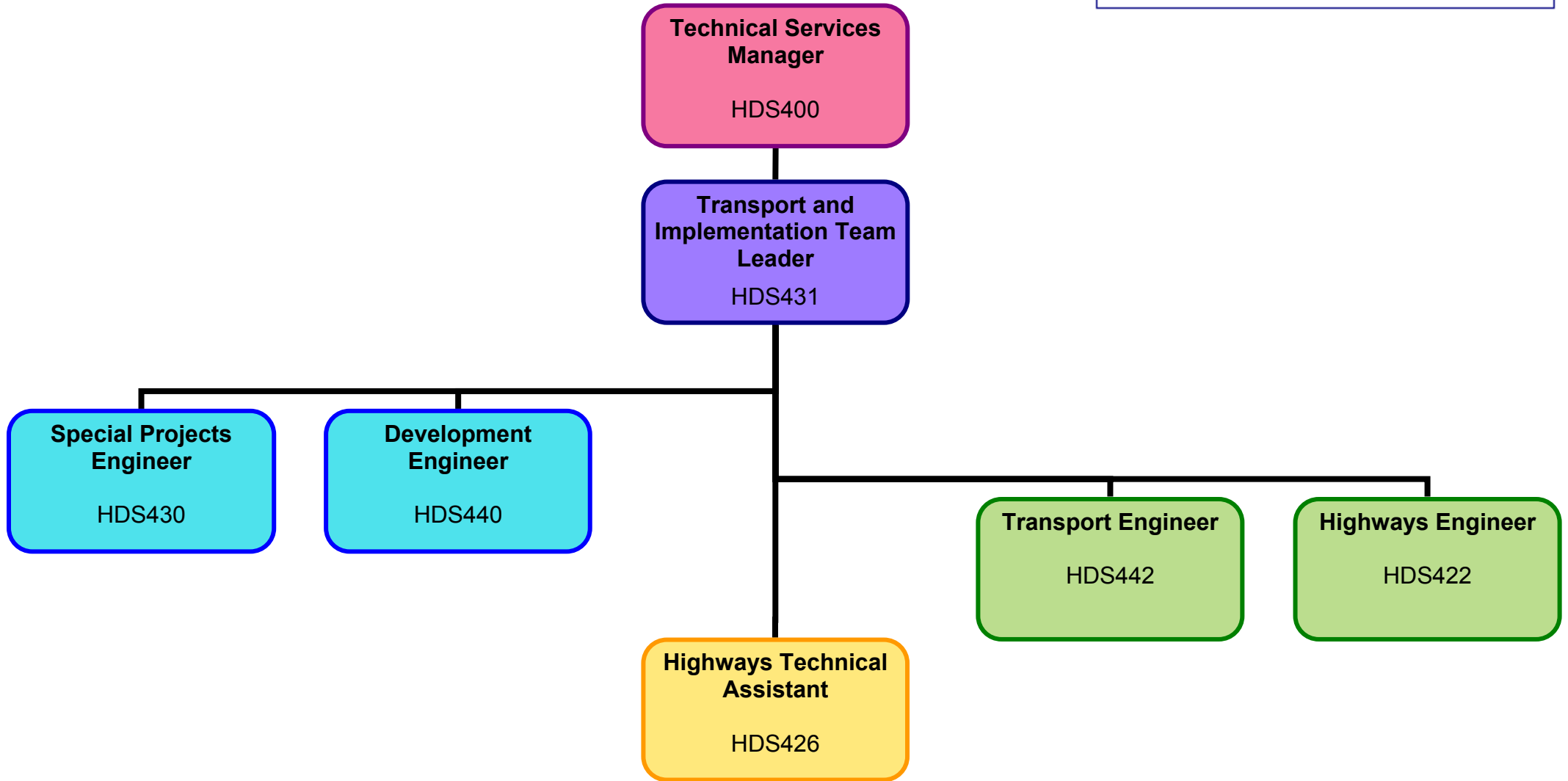


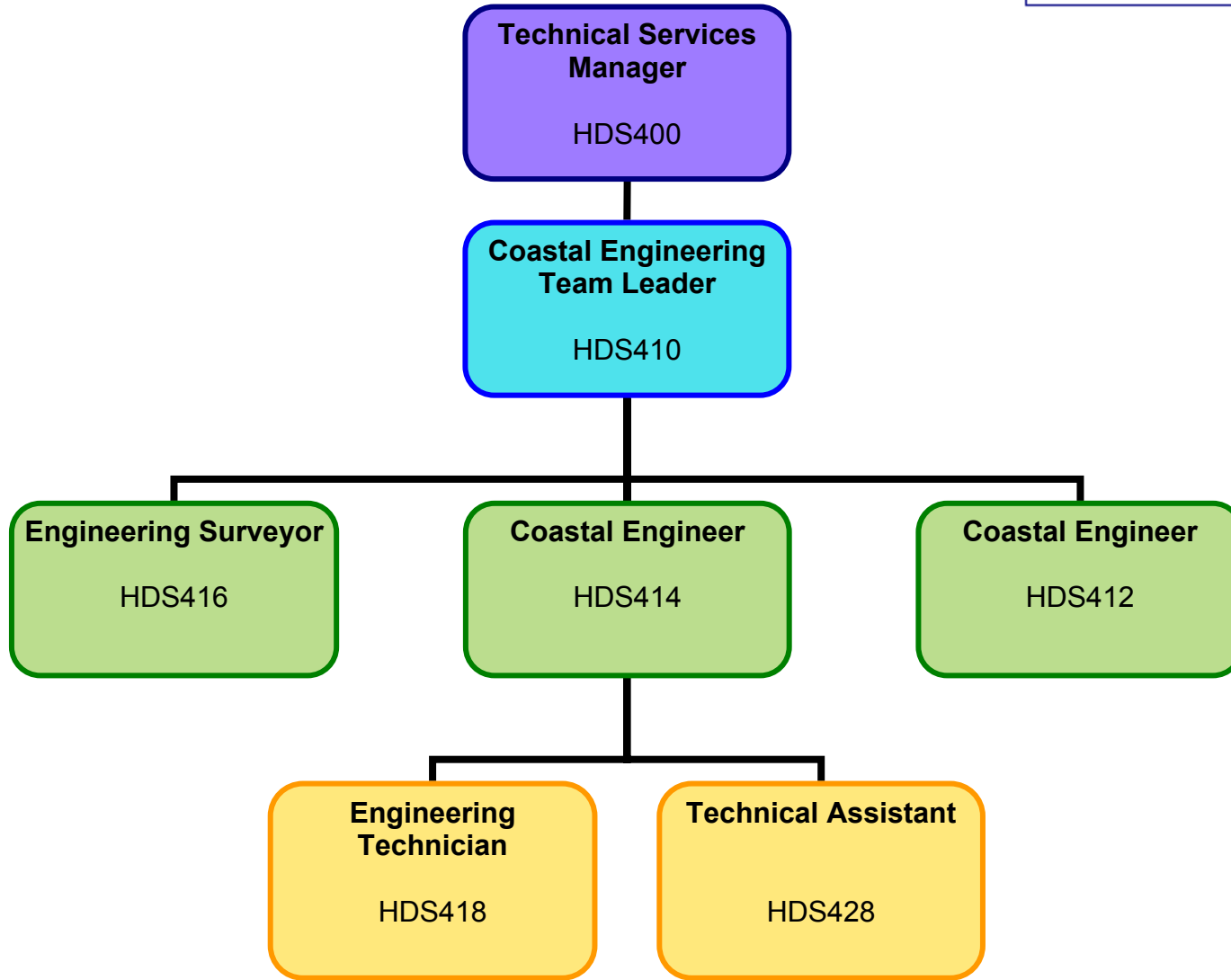


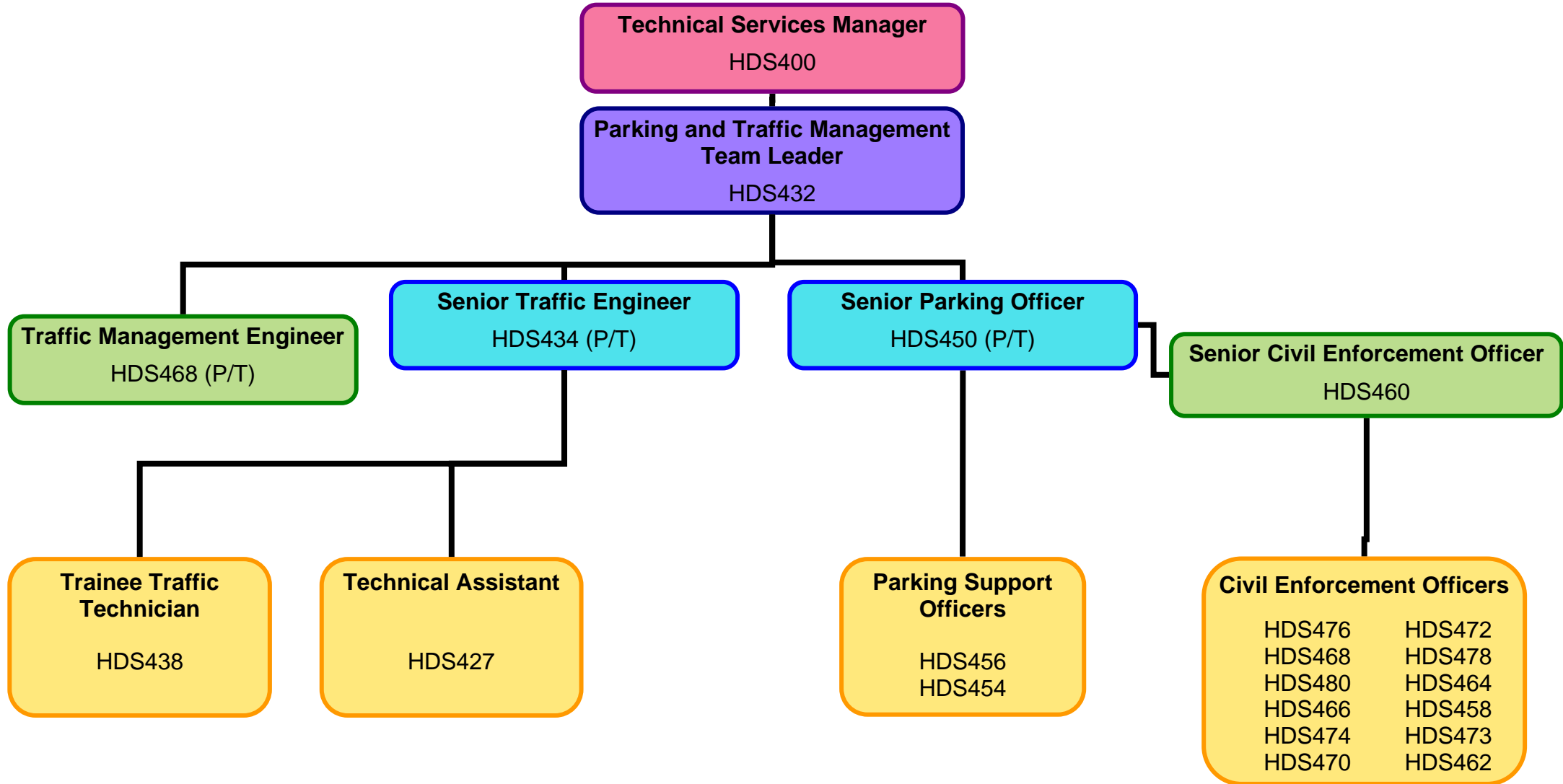


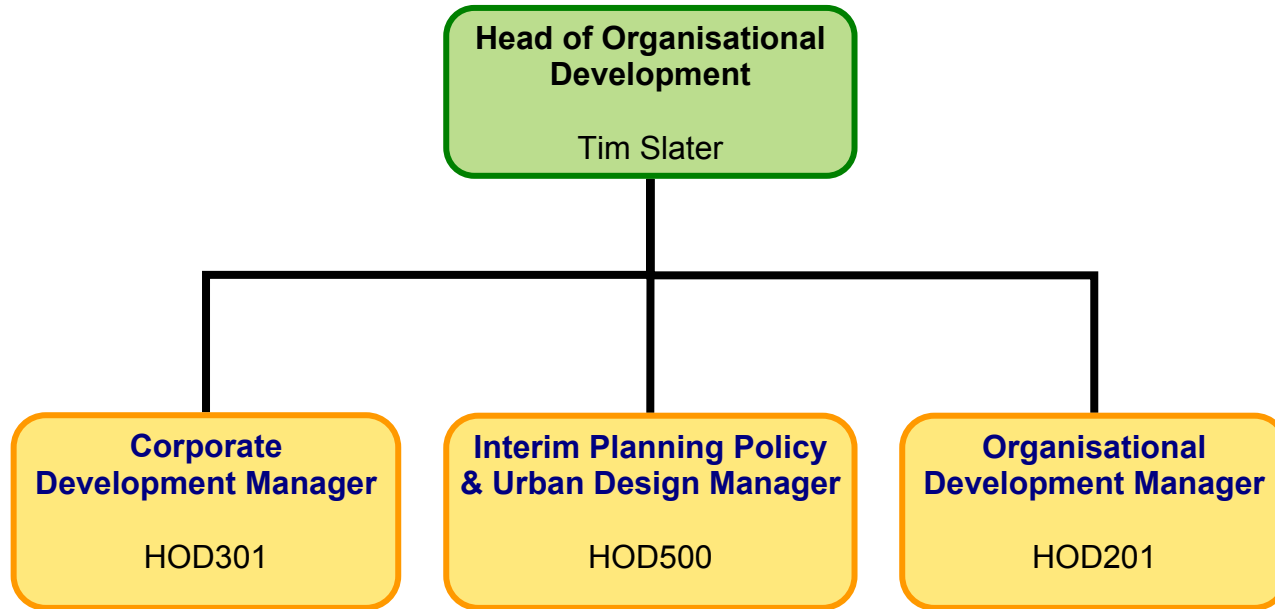
\* Employed by Portsmouth City Council, based at Havant Borough Council

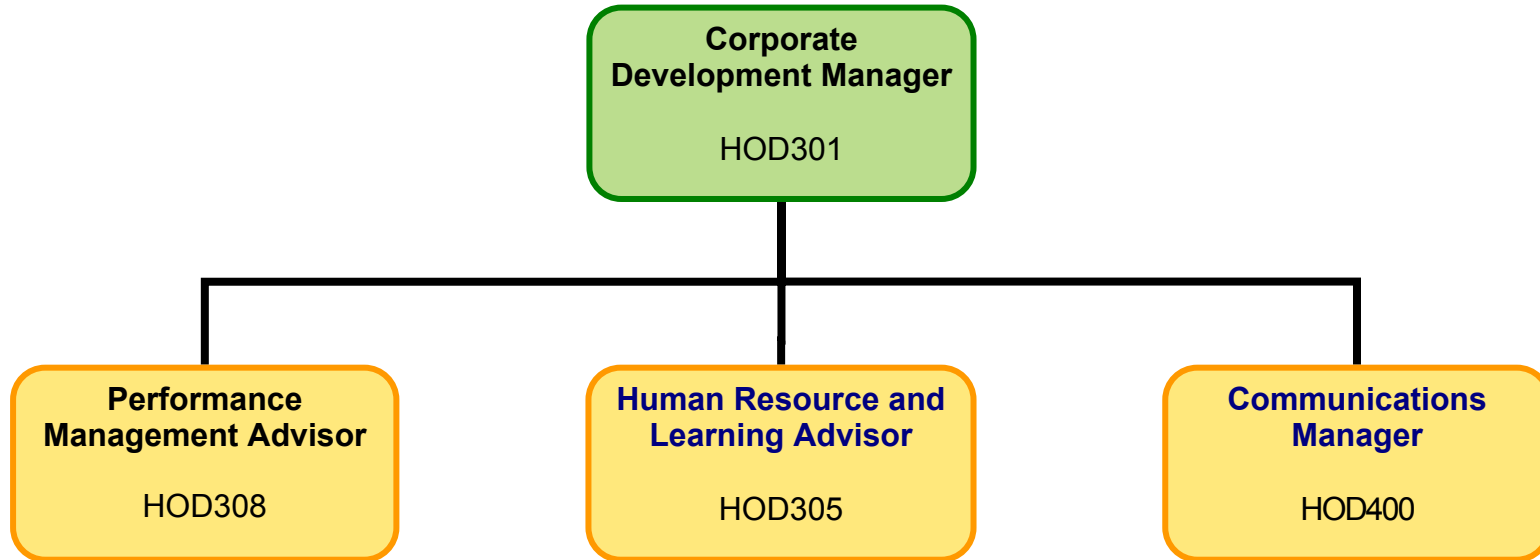


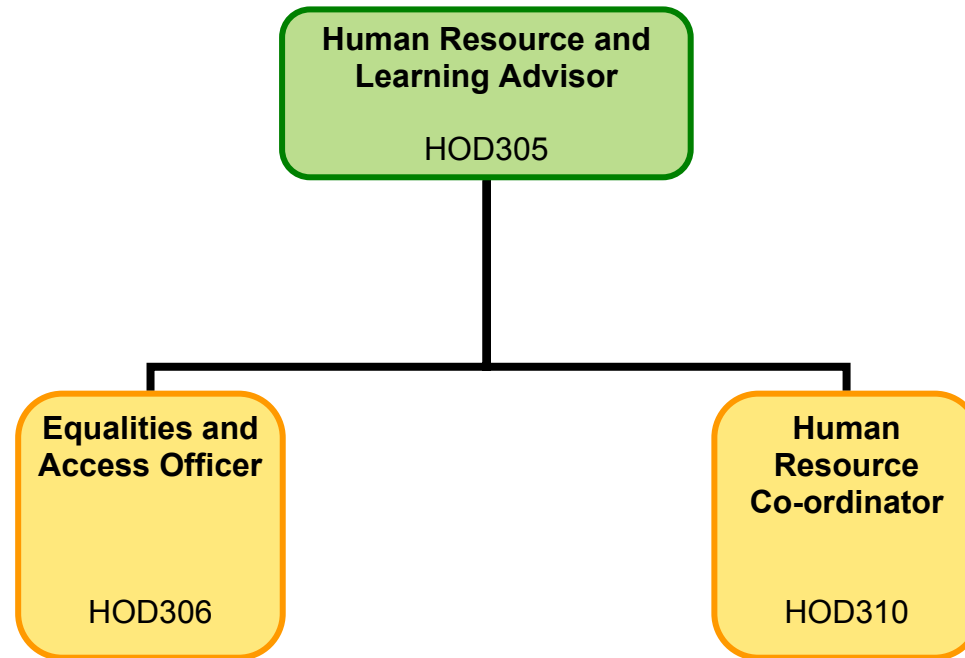


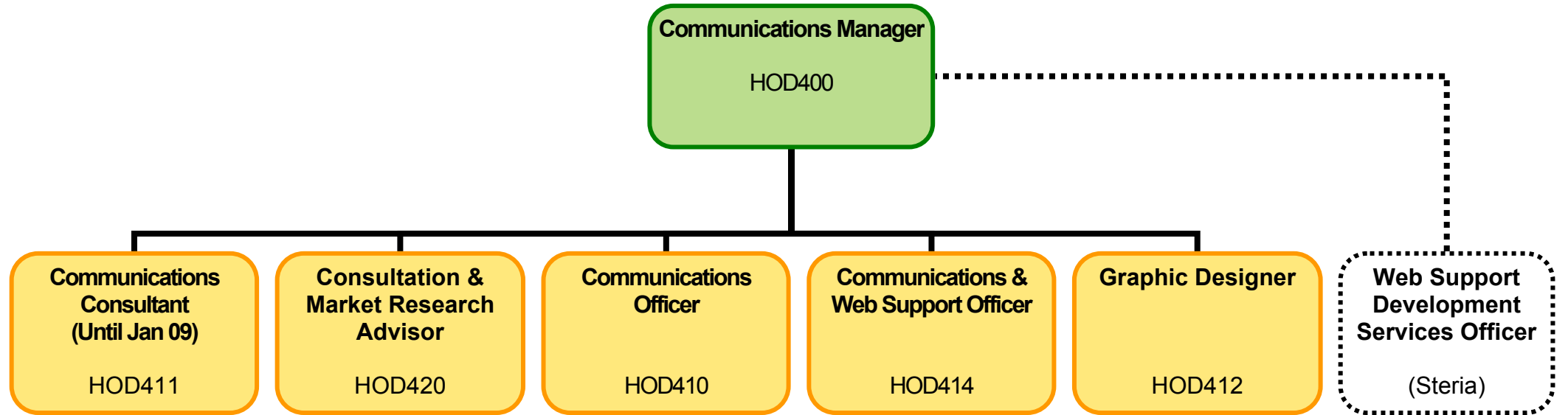


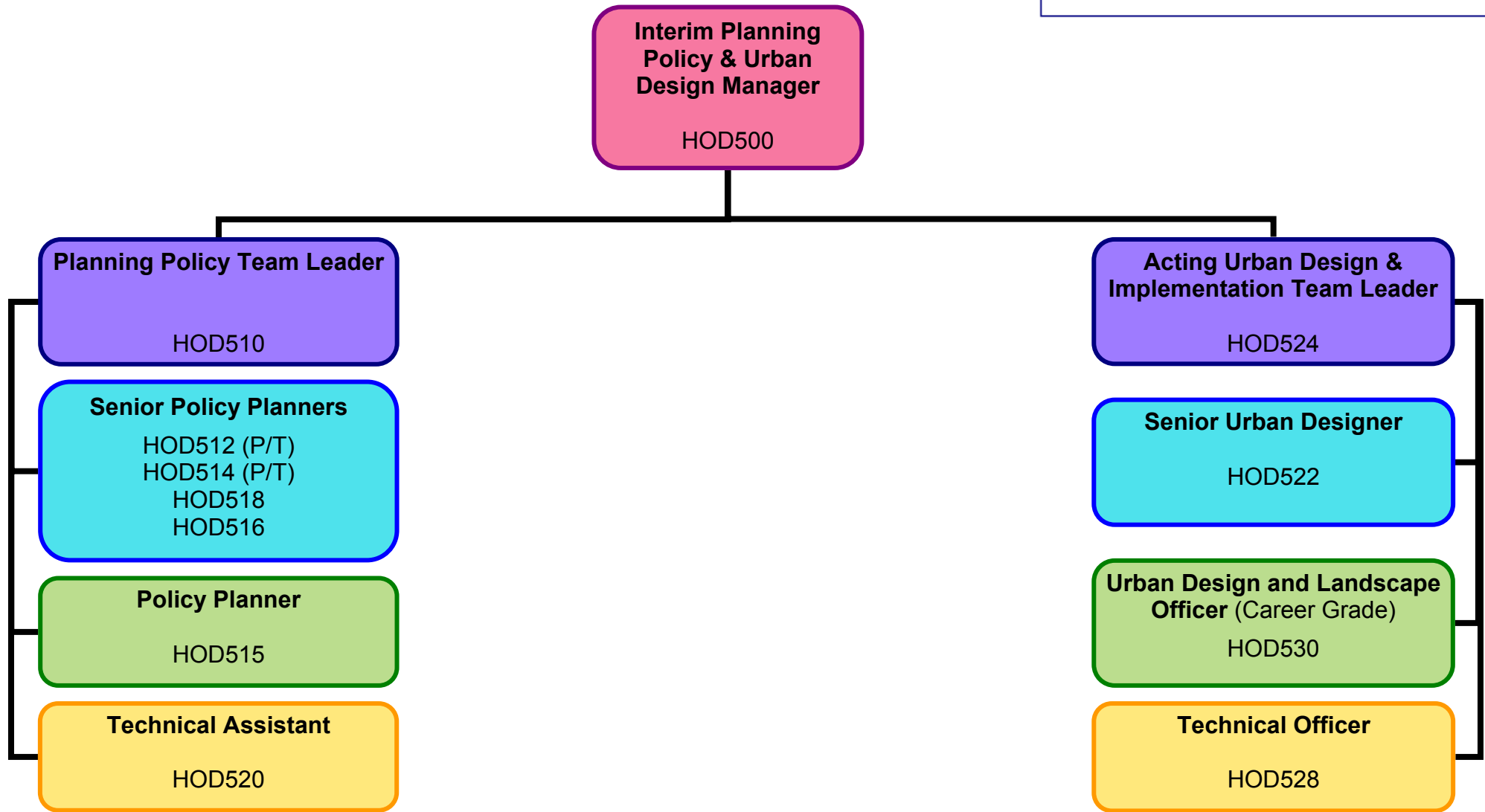


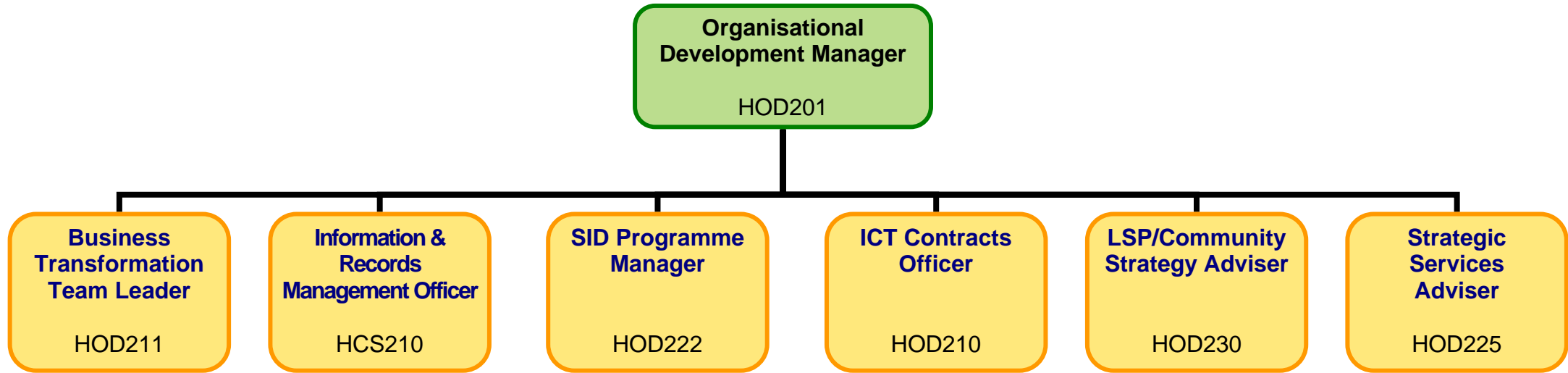


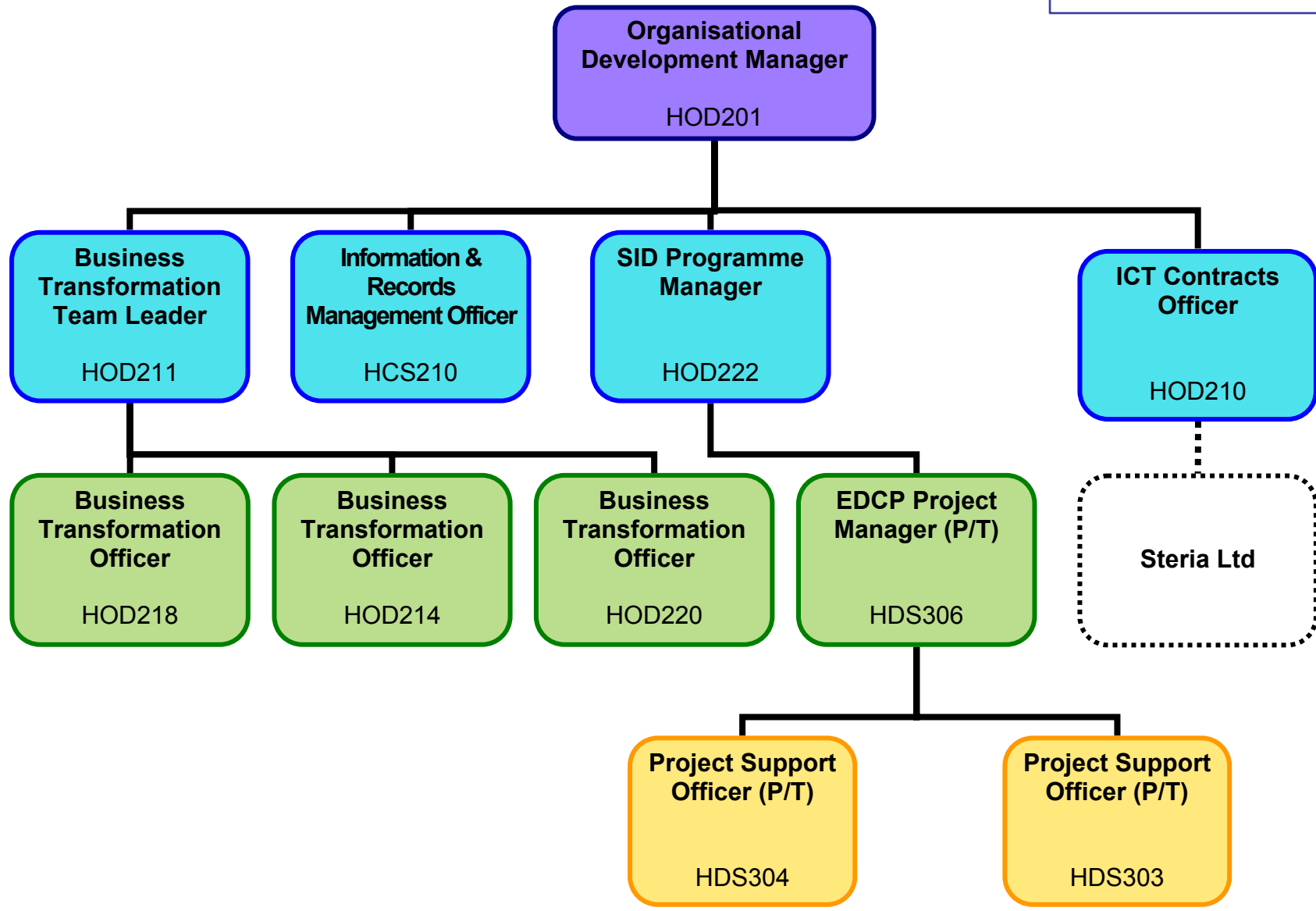


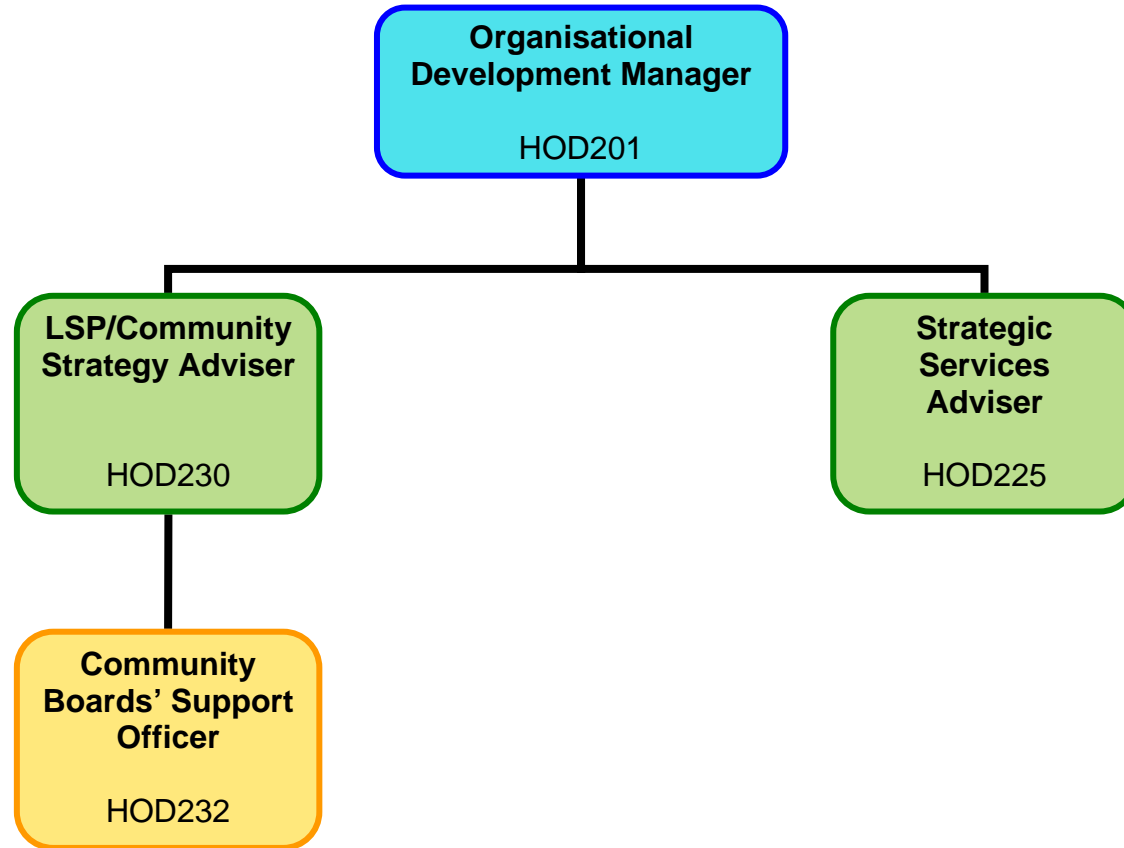


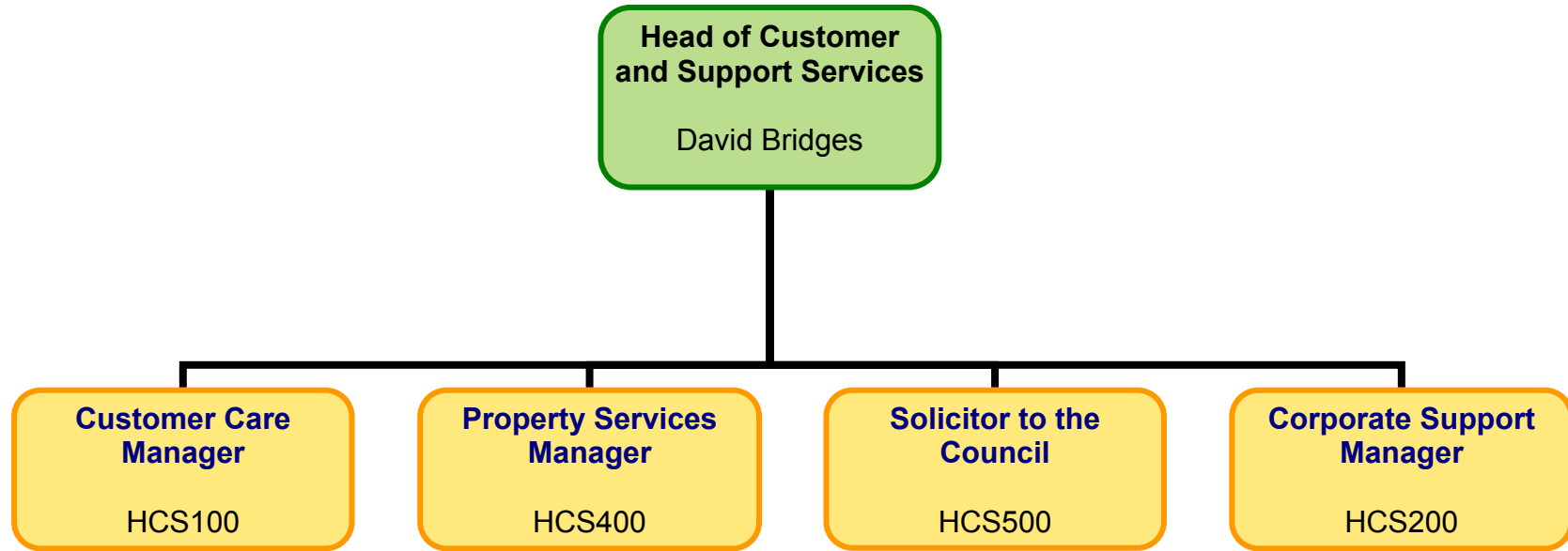


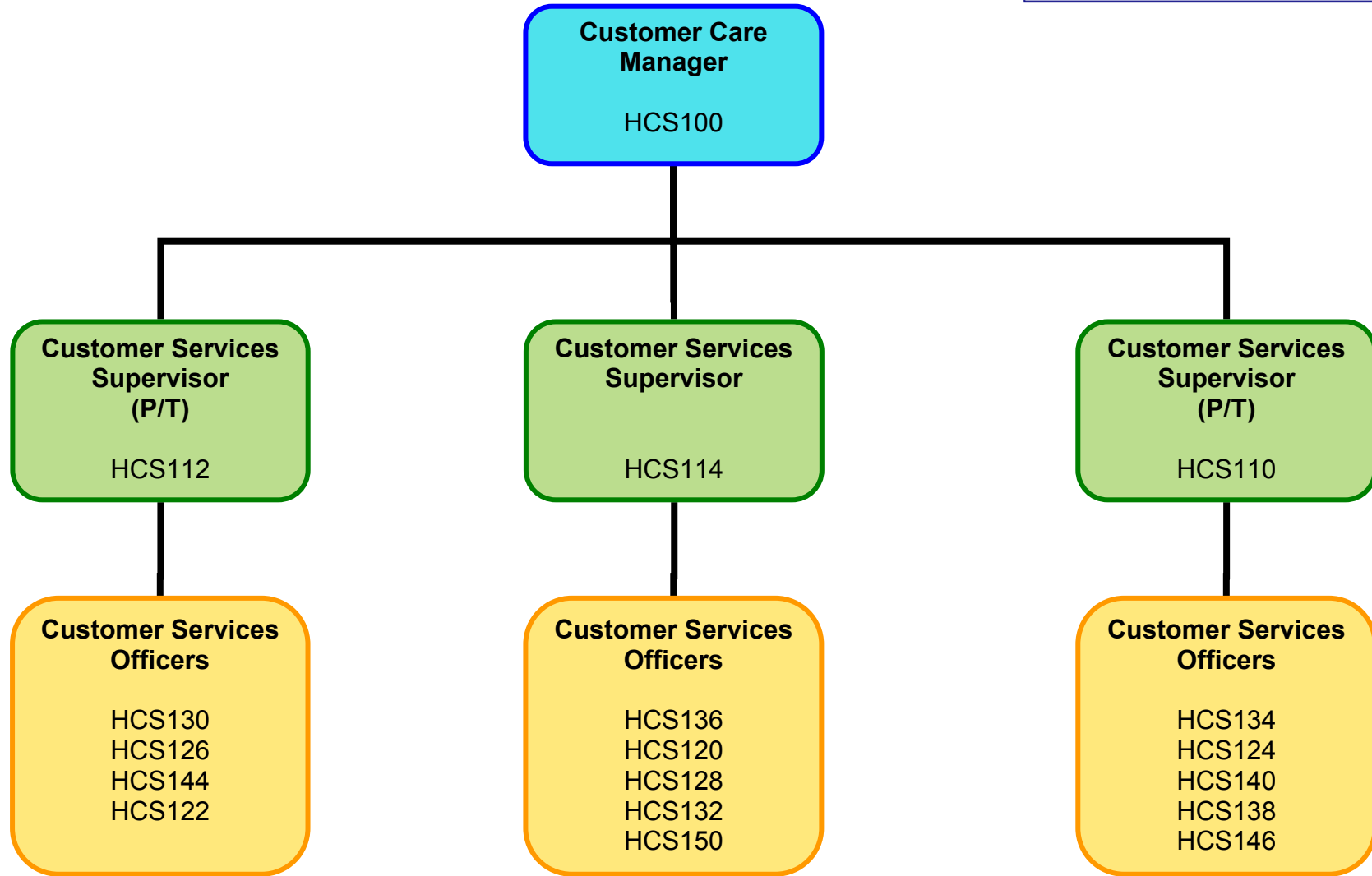


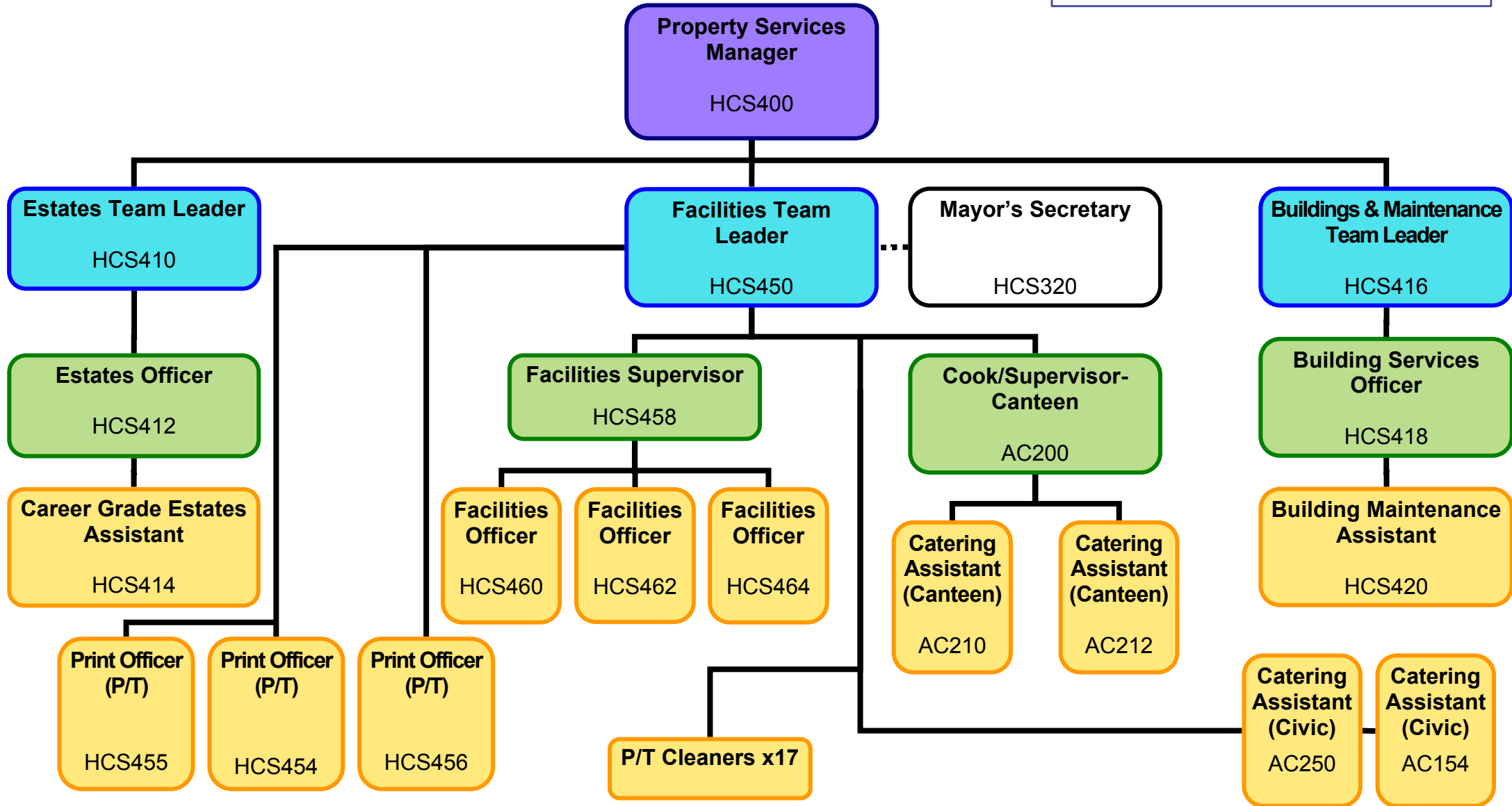


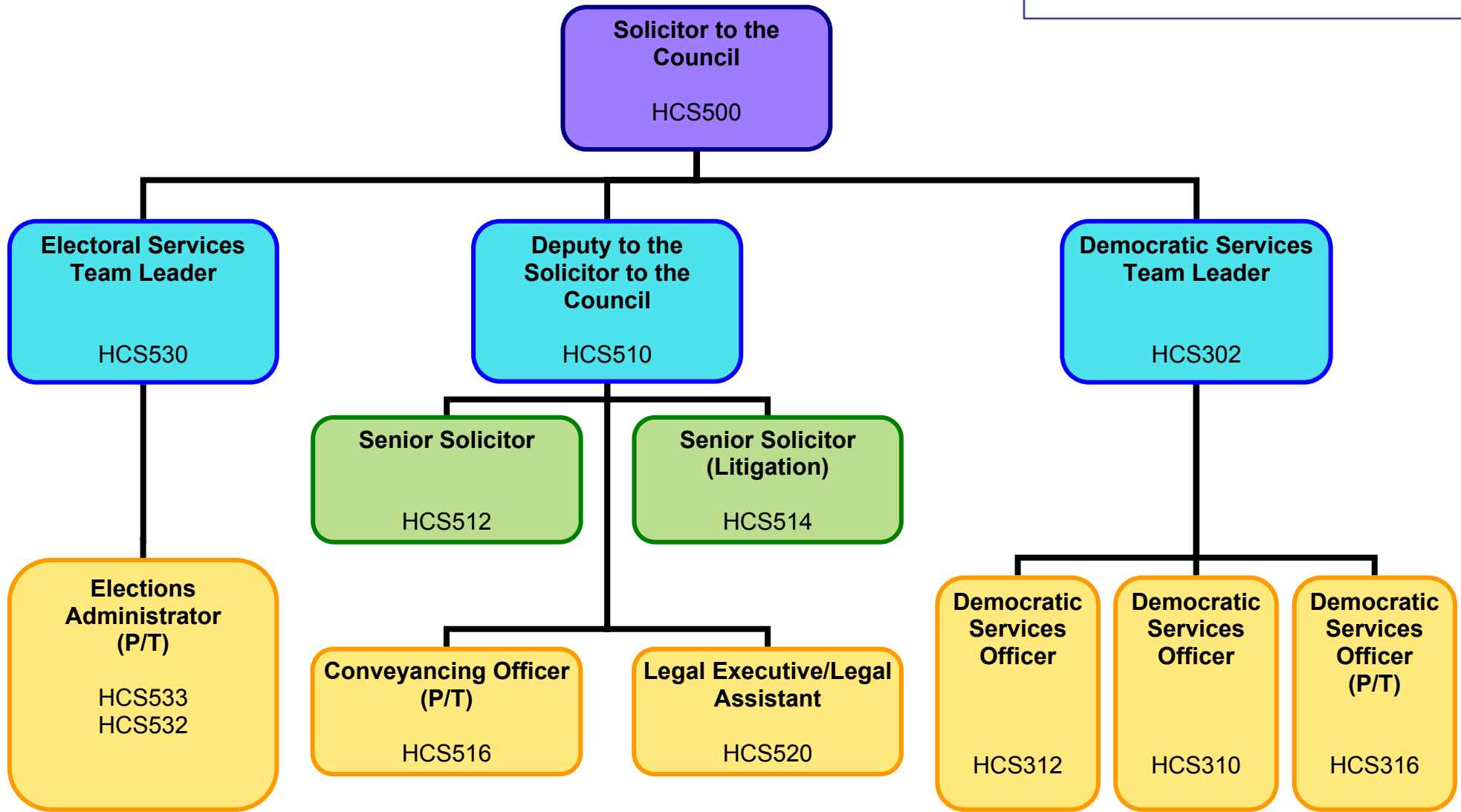




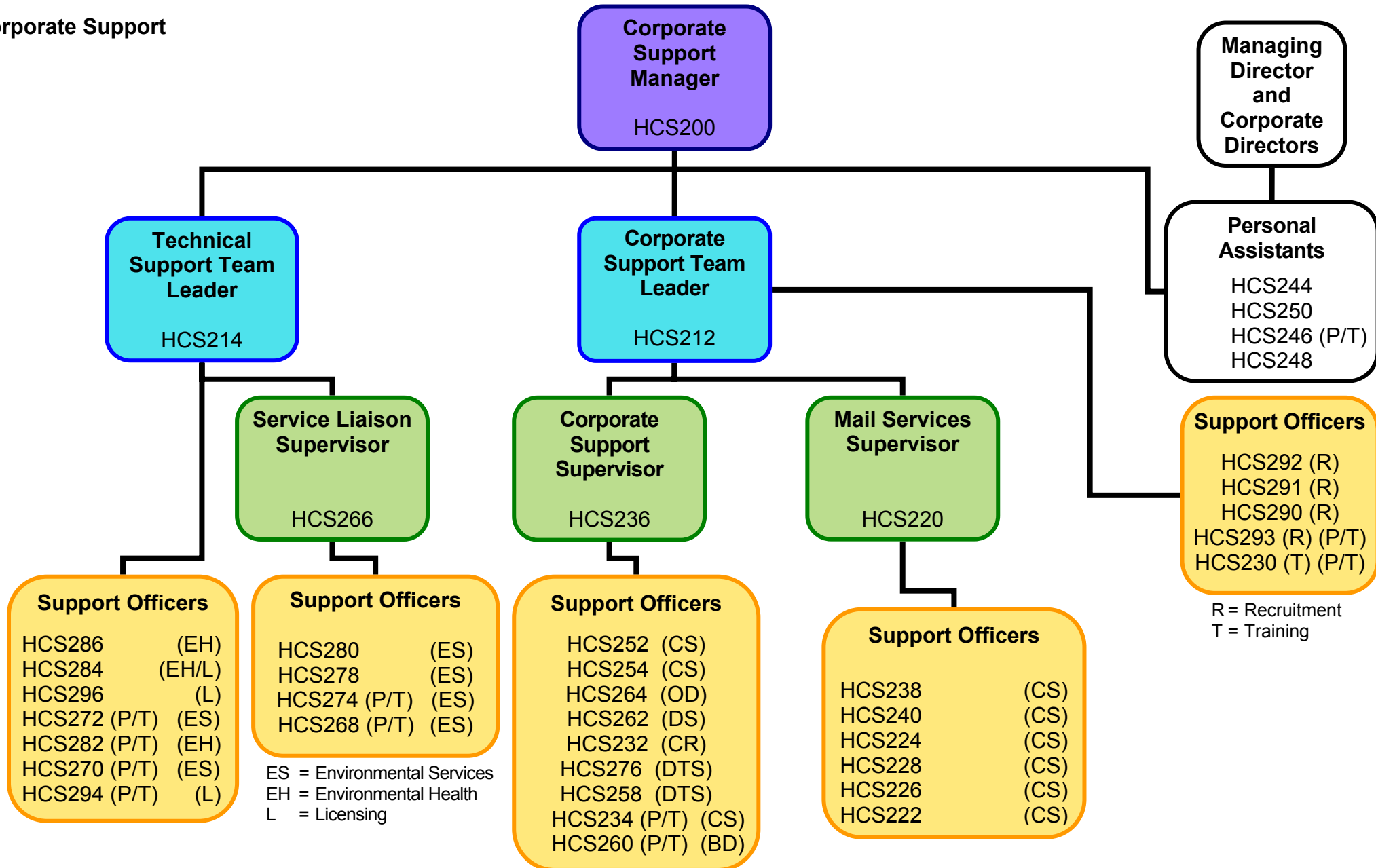








Corporate Support



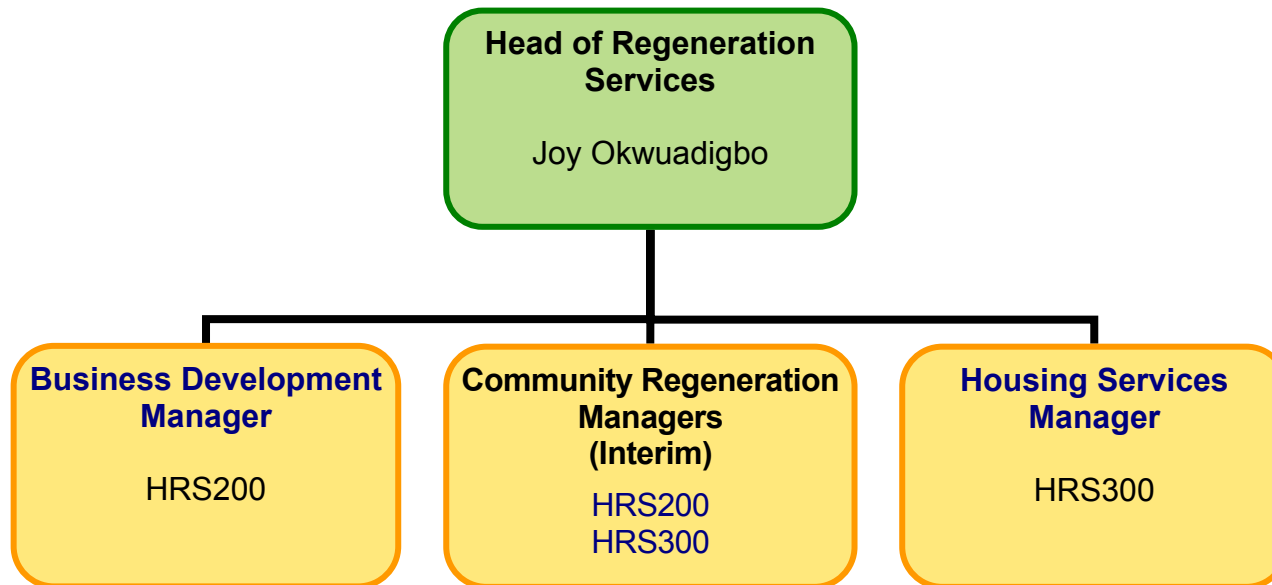
R = Recruitment  
T = Training

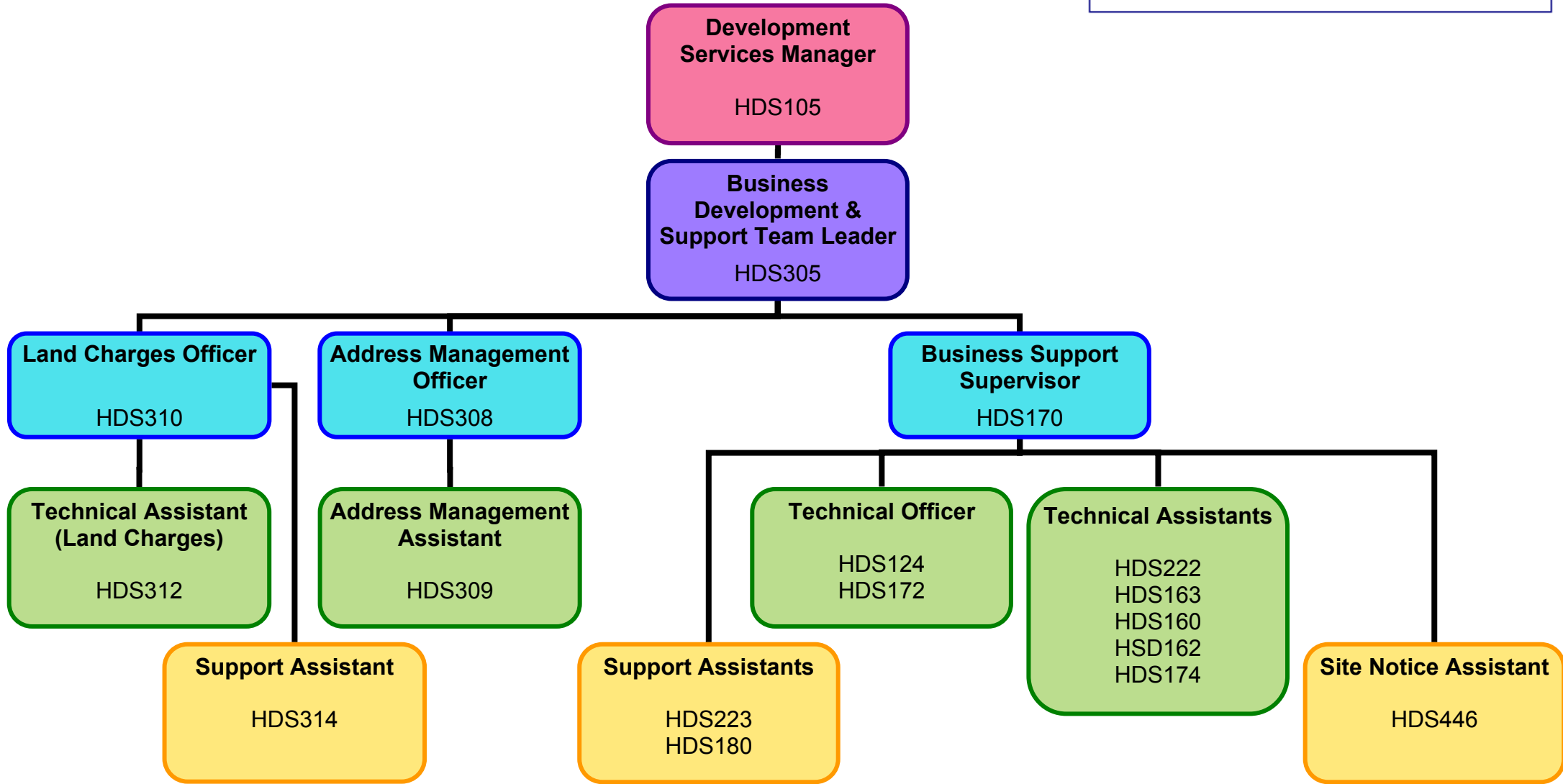
ES = Environmental Services  
EH = Environmental Health  
L = Licensing

DTS = Development & Technical Services  
OD = Organisational Development  
CR = Community Regeneration  
DS = Democratic Services  
CS = Corporate Support  
BD = Business Development

Last Updated: 12 December 2008

[Back to Upper Management Structure](#)





**Community Regeneration  
Manager (Interim)**  
HRS200

**Cultural Services Team  
Leader**  
HRS112

**Community Team  
Leader**  
HRS124

**Sports  
Development  
Officer**  
HRS110

**Youth  
Participation  
Officer (P/T)**  
HRS121

**Community  
Dance Coach**  
HRS136

**Children &  
Young People's  
Officer**  
HRS123

**Play Development  
Worker (P/T)**  
HRS122

**Arts  
Development  
Assistant**  
Sept 08 – Jan 09

**Physical  
Activities  
Officer \***

**Neighbourhood  
Development  
Officer**  
HRS138

**Health  
Development  
Officer**  
HRS136

**Community  
Development  
Worker (BME) \***

**Community  
Development  
Officer**  
HRS128

**Community  
Development  
Officer**  
HRS126

**Music Fusion  
Manager \***

**Admin & Finance  
Asst \***

**Project Manager  
(P/T) \***

**Project Manager  
(P/T) \***

\* Externally funded

