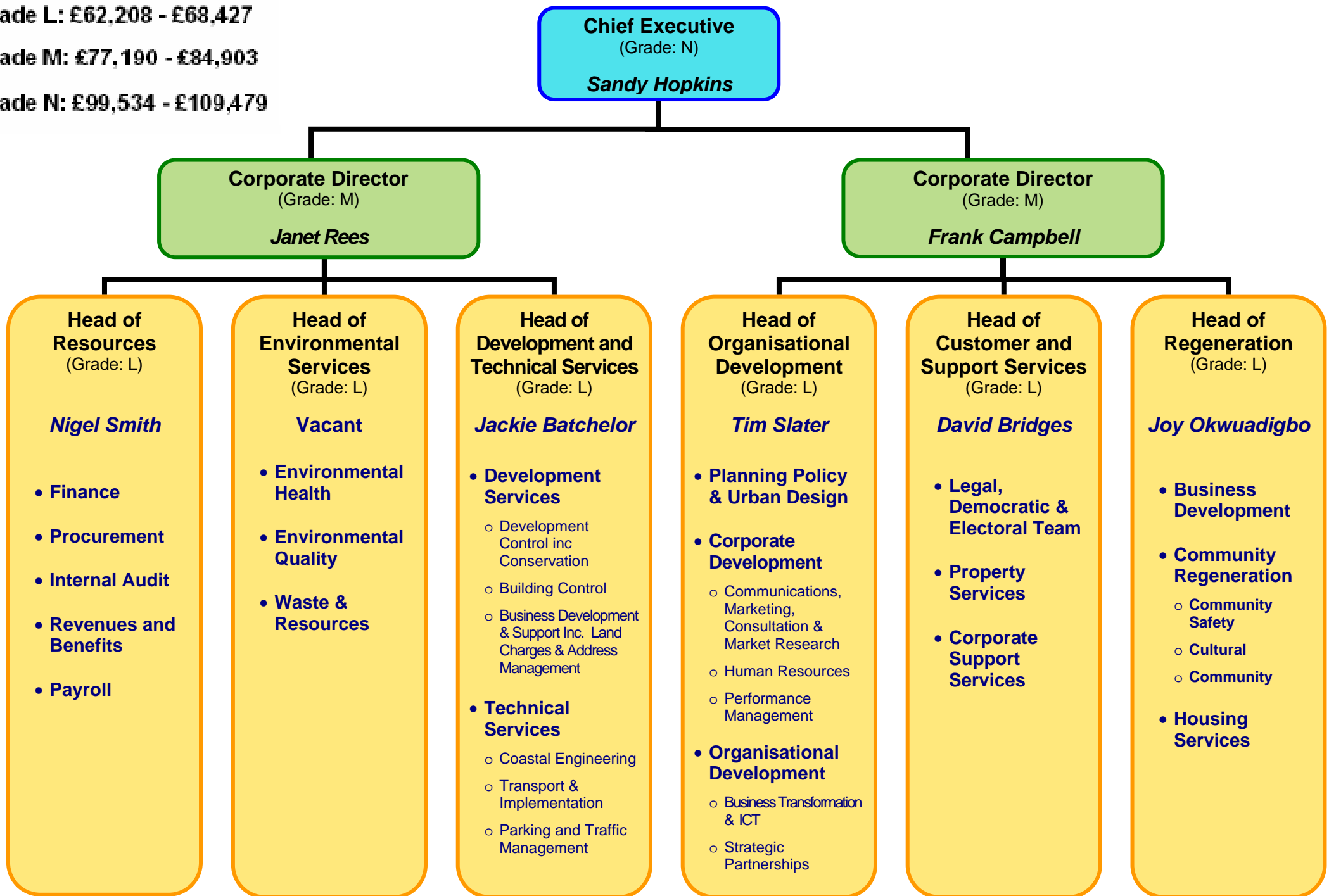
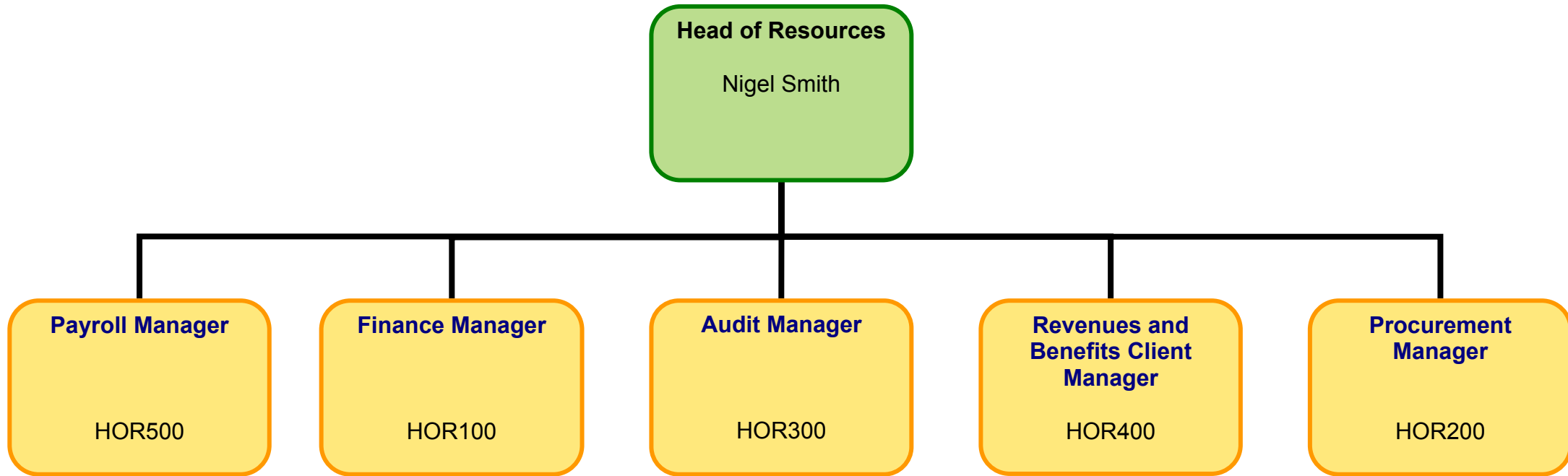


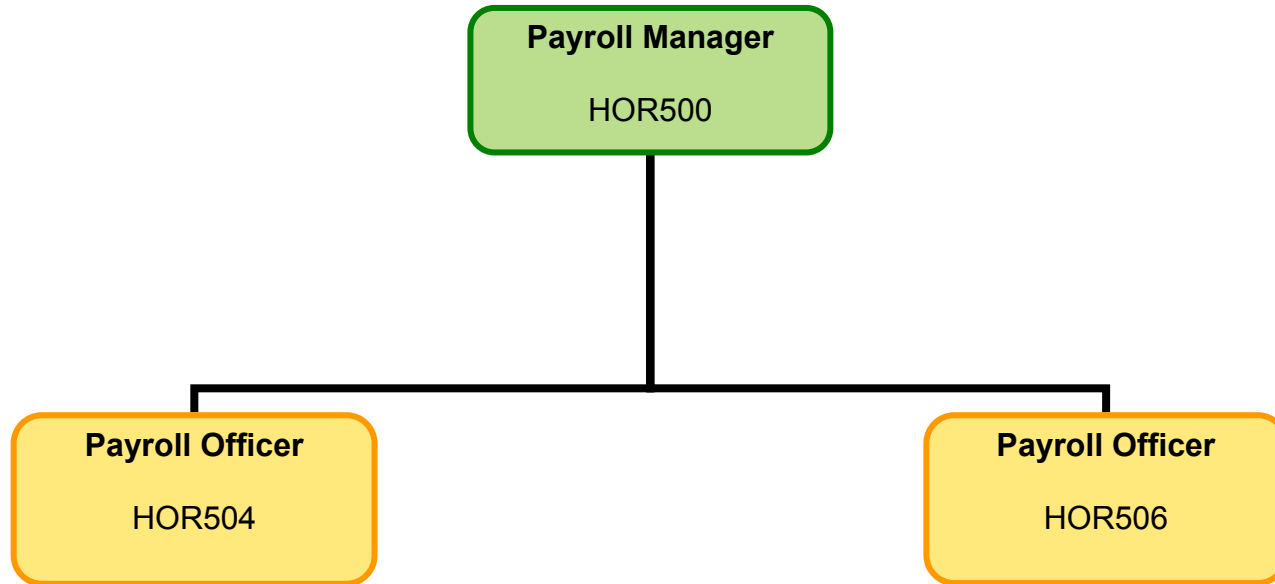
Grade L: £62,208 - £68,427

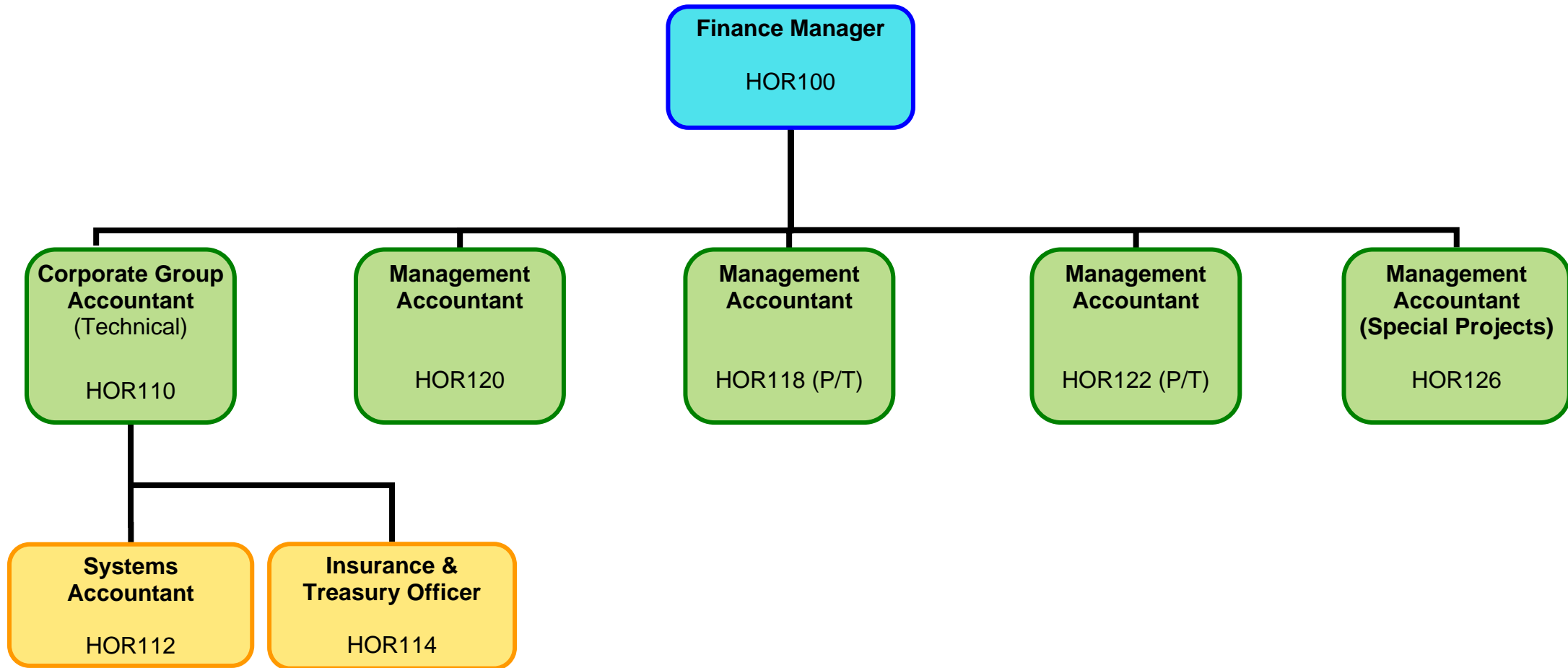
Grade M: £77,190 - £84,903

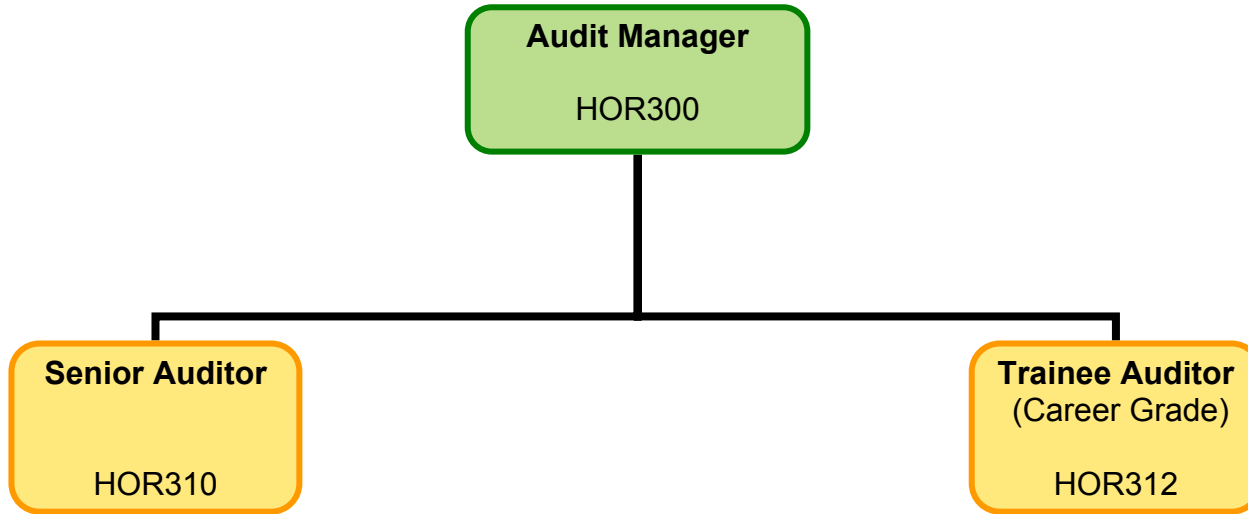
Grade N: £99,534 - £109,479

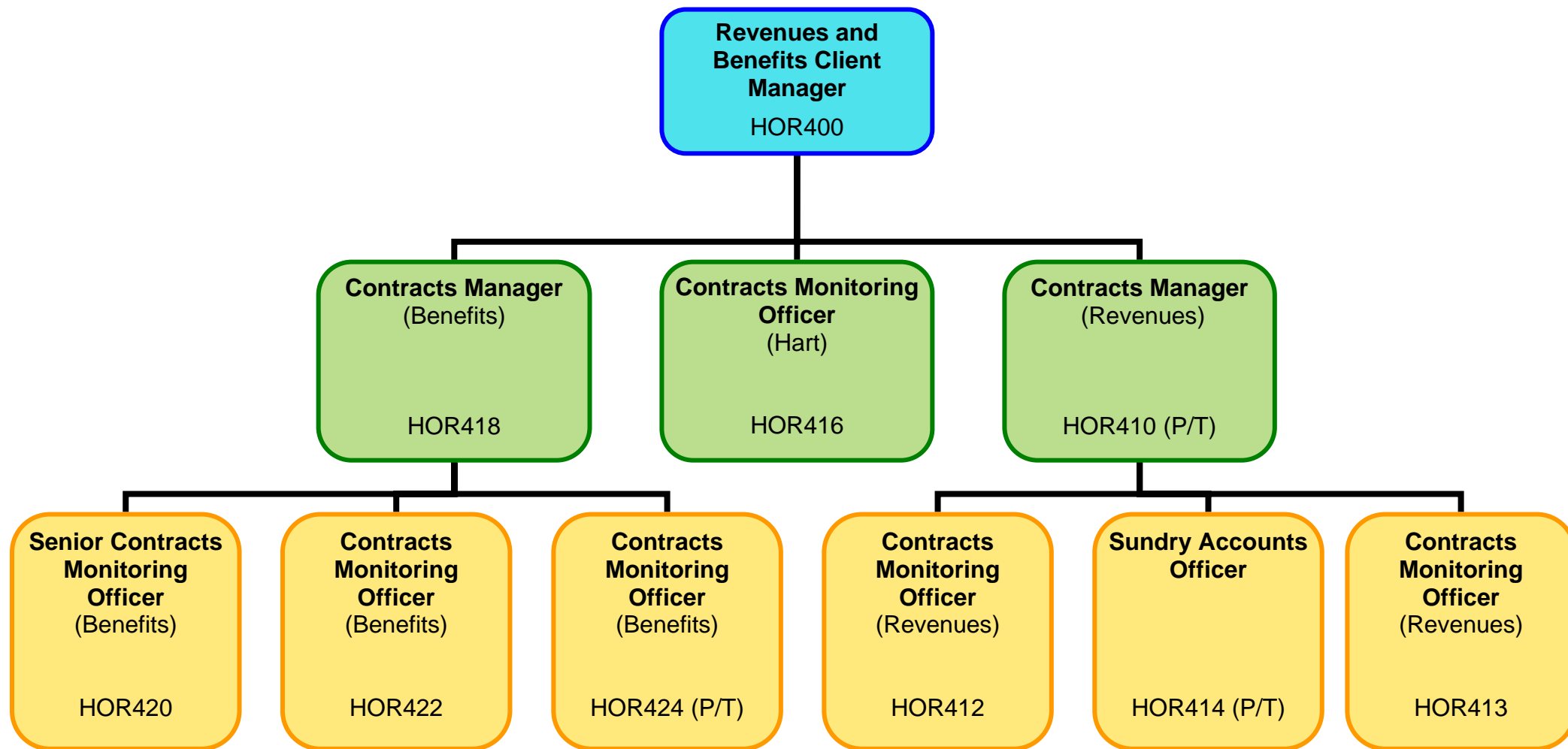


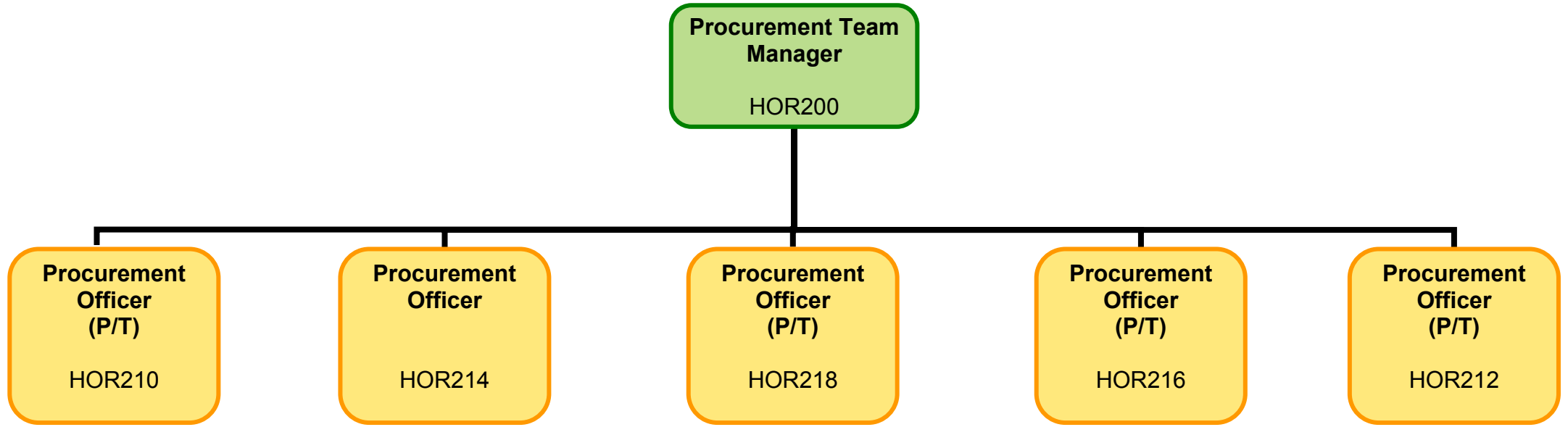


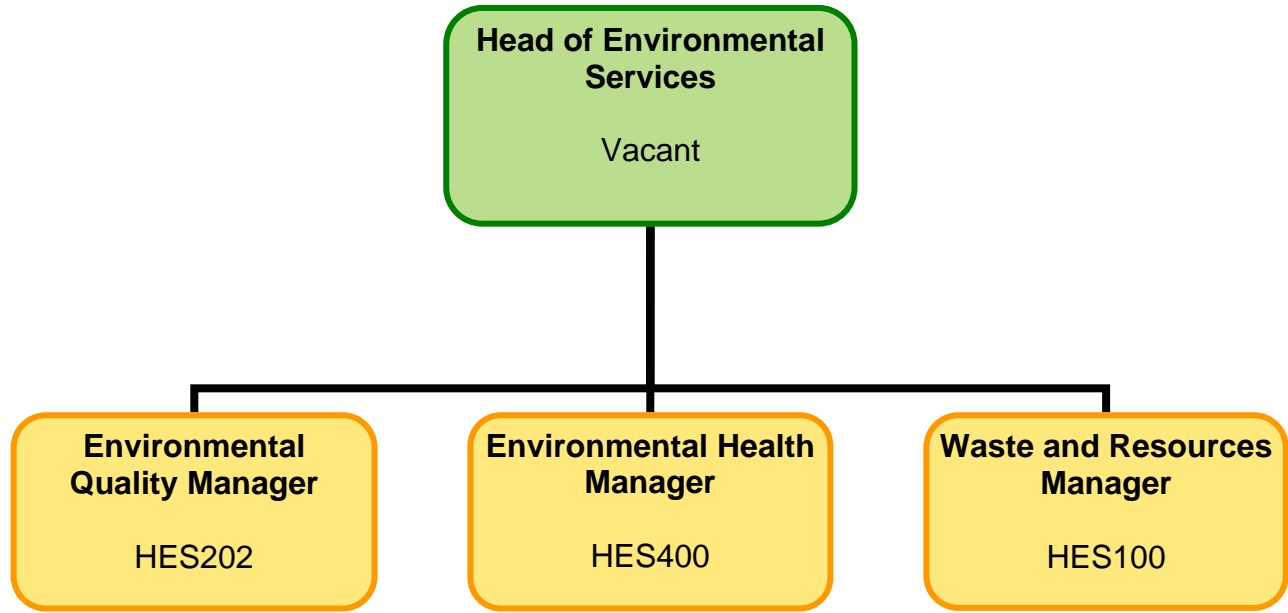


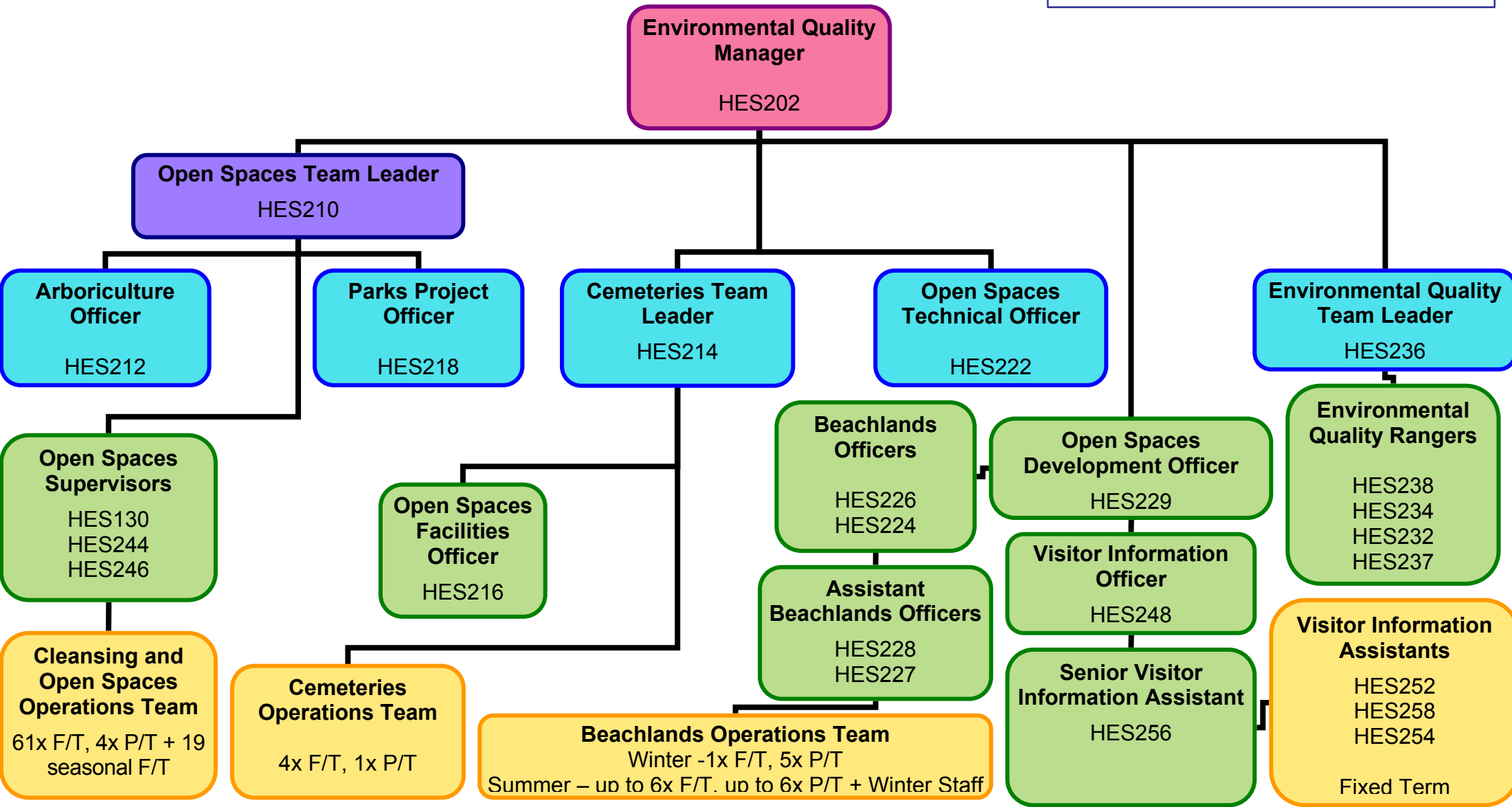


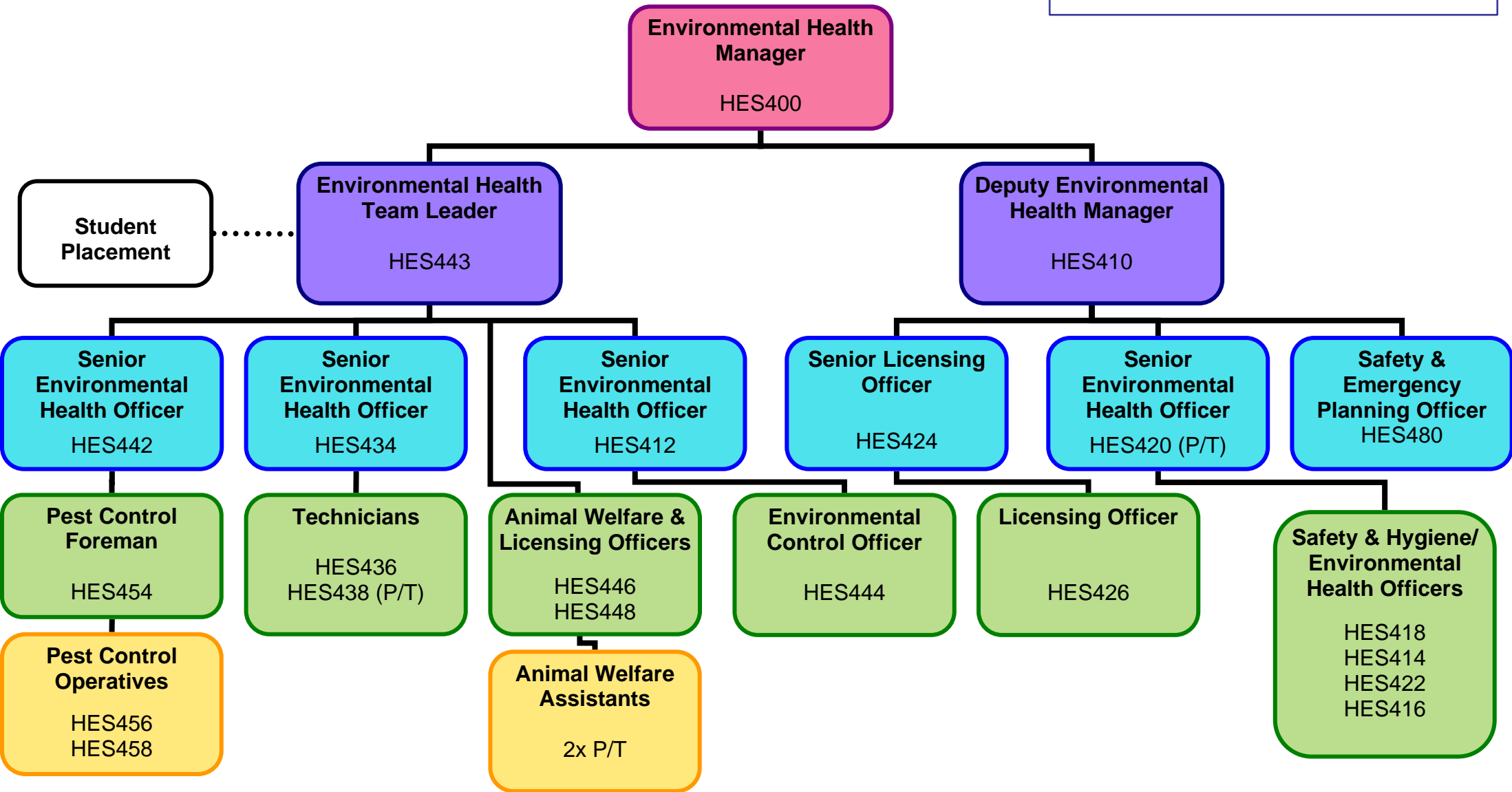


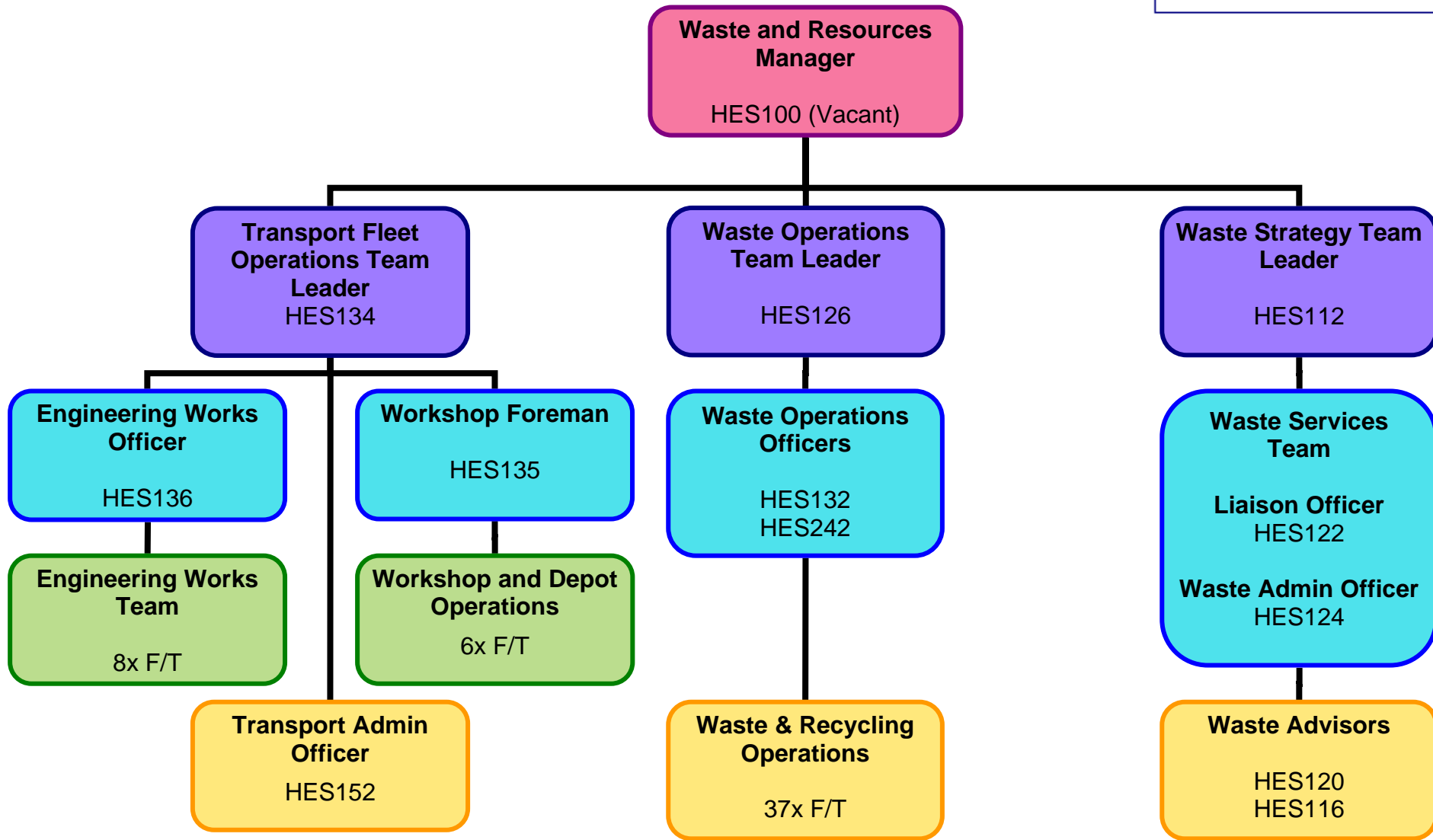


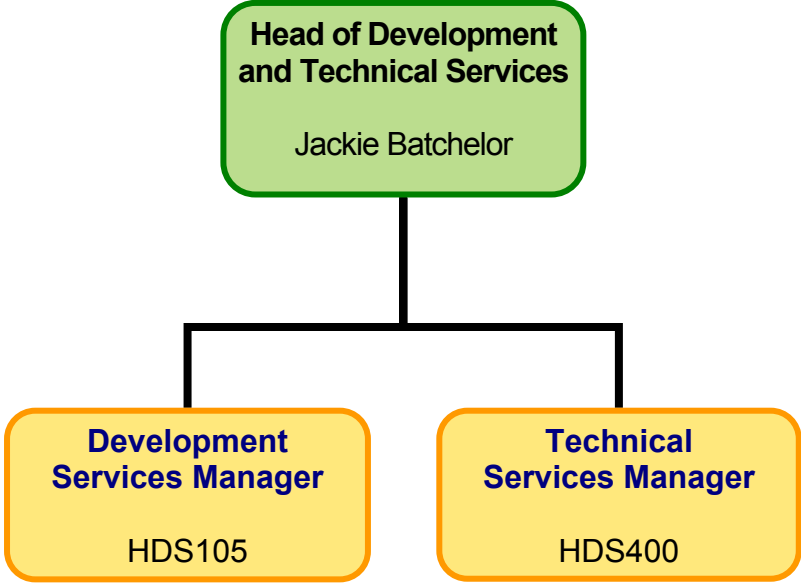


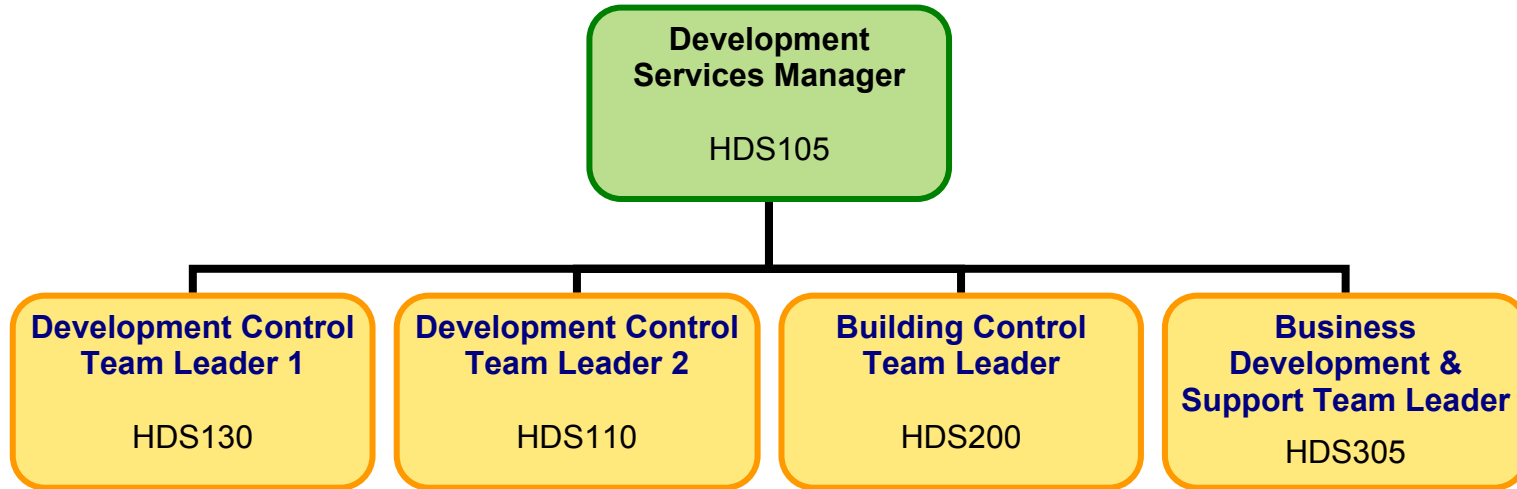


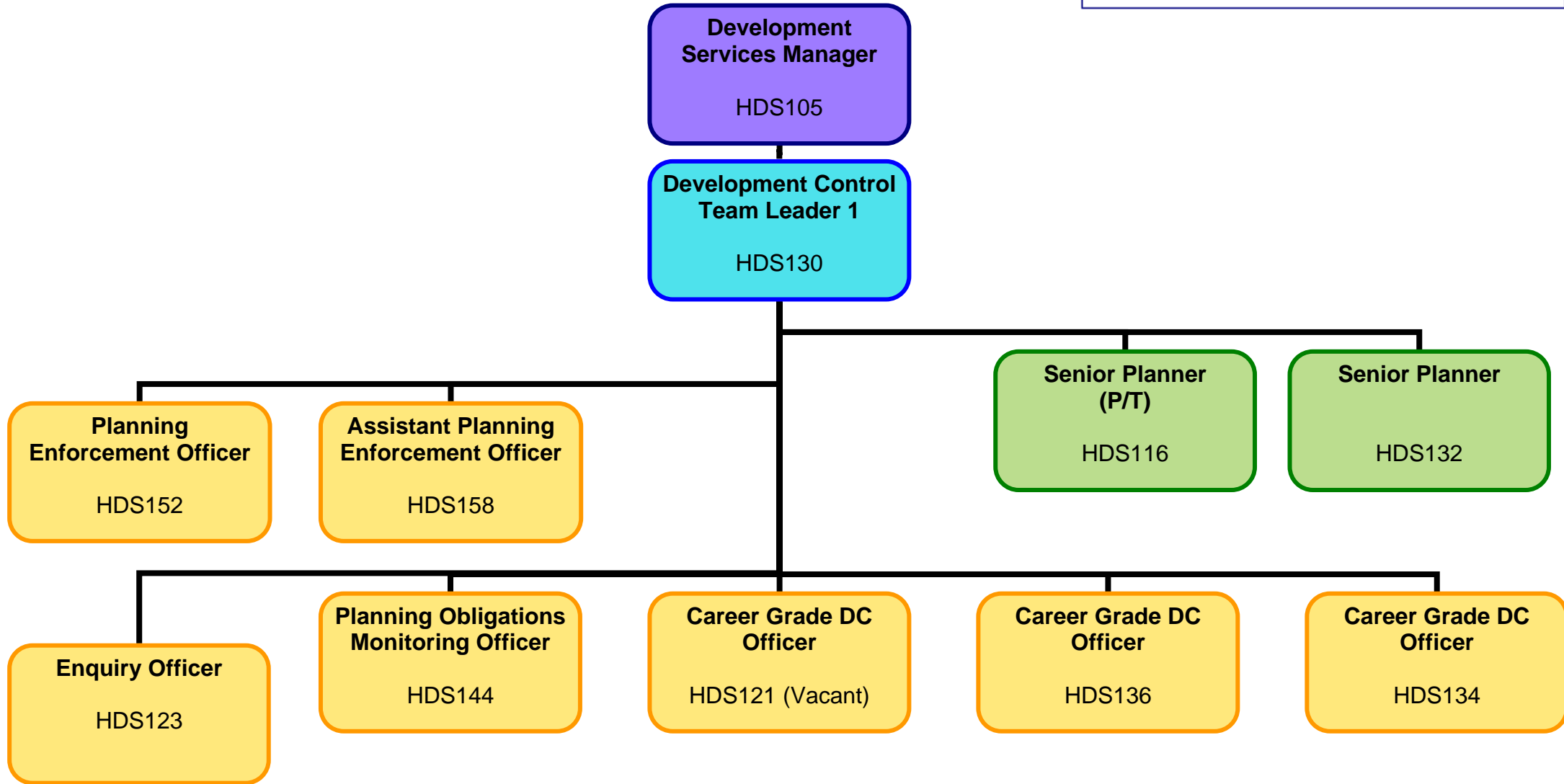


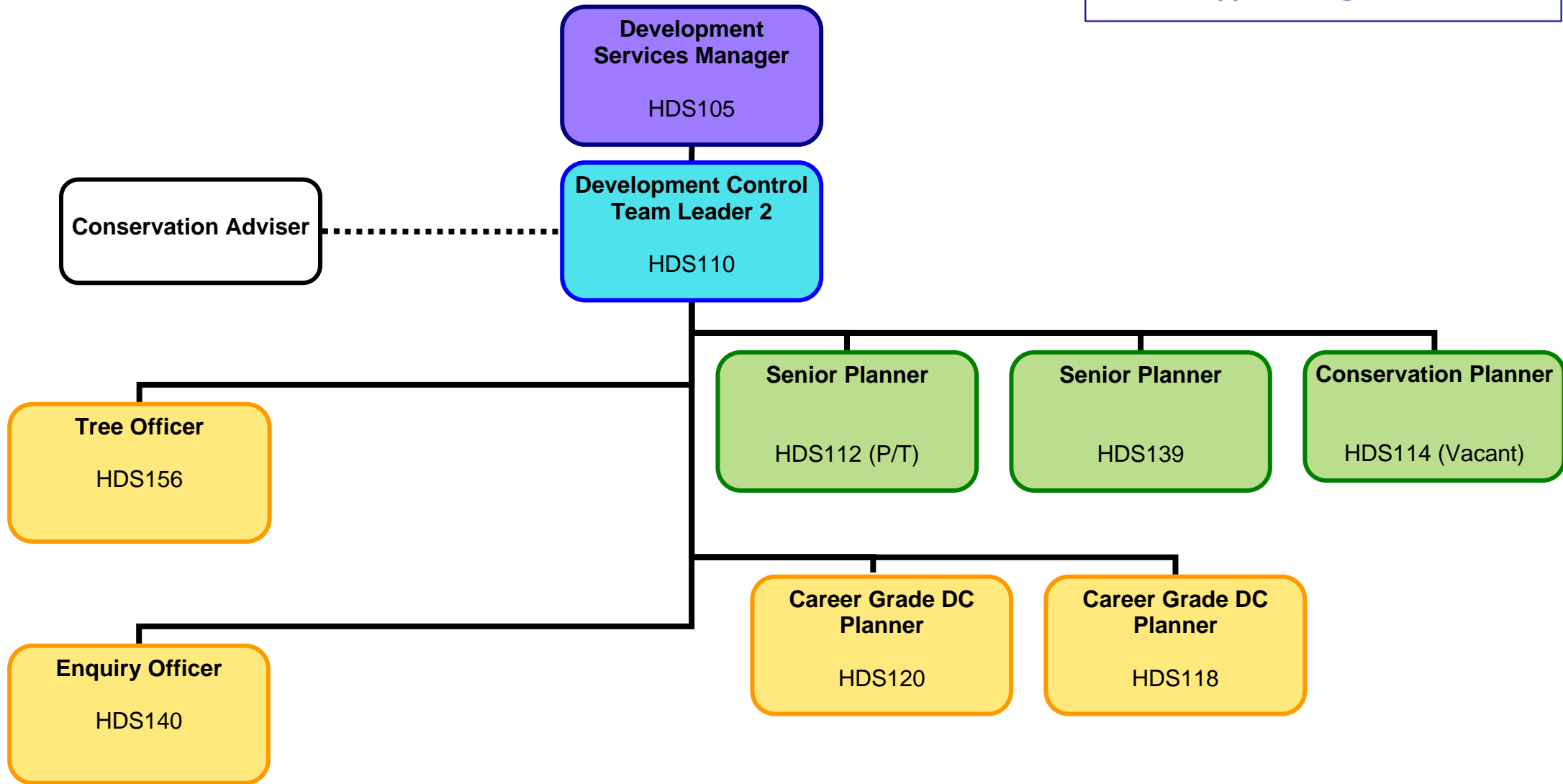


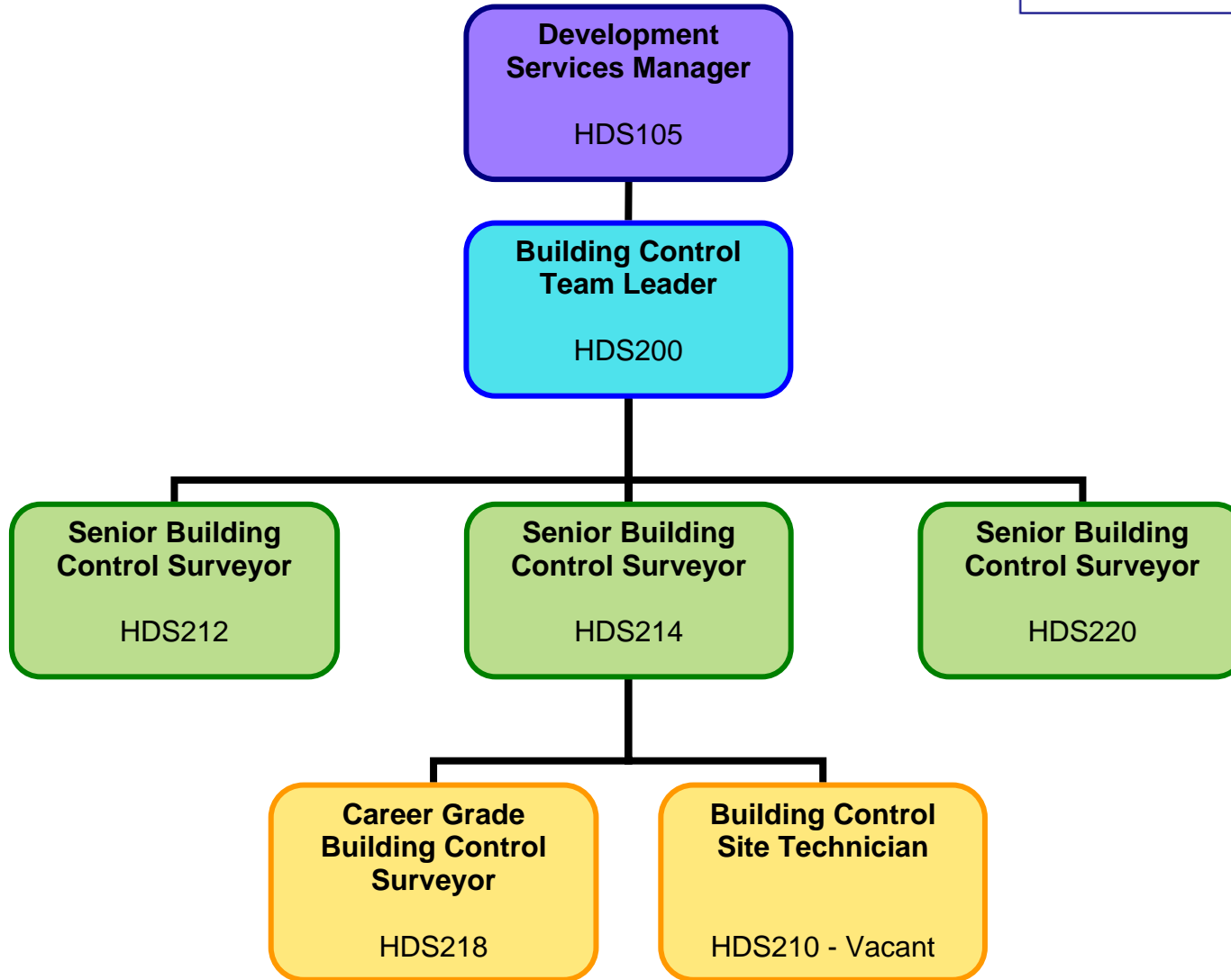


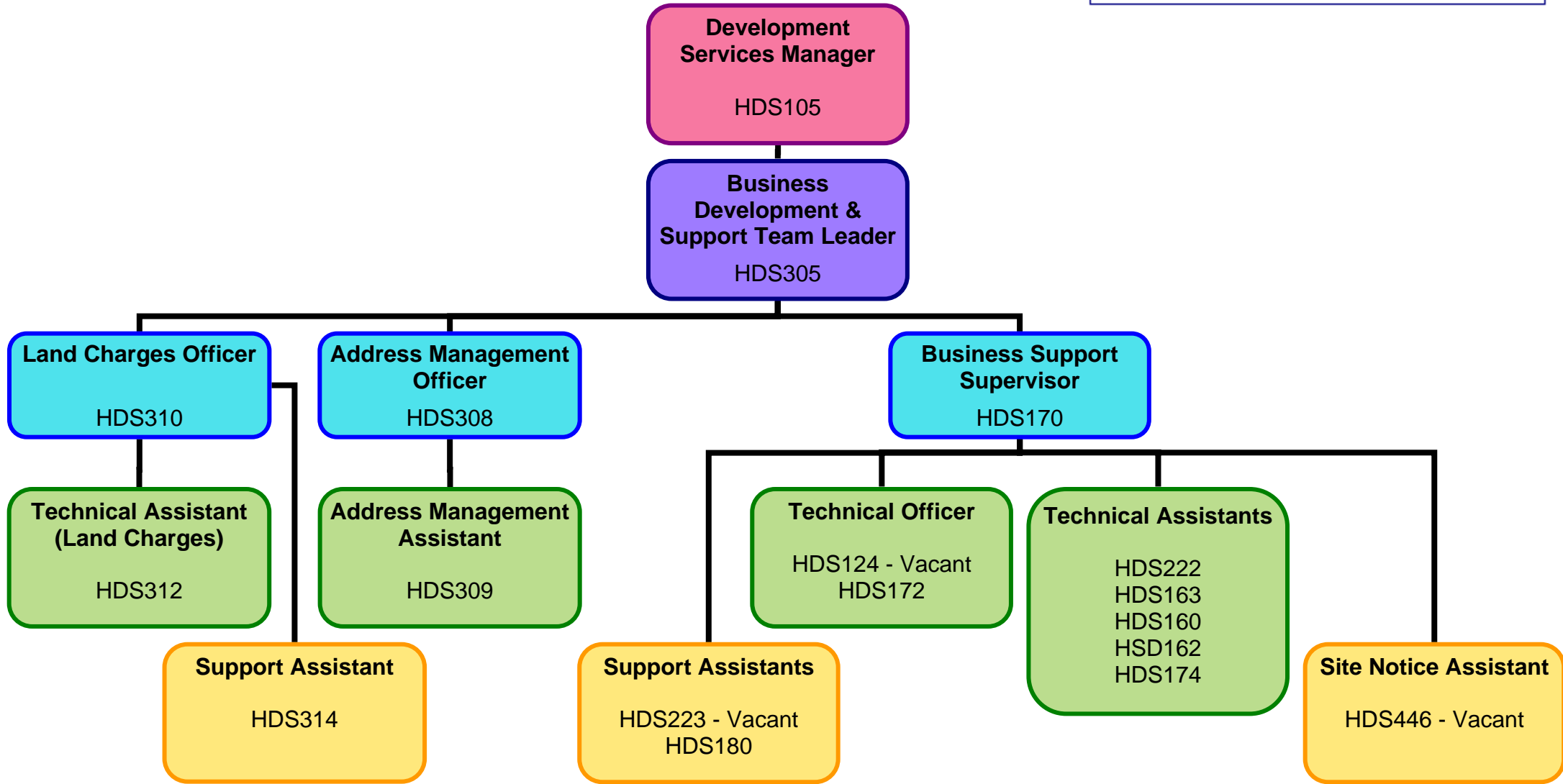


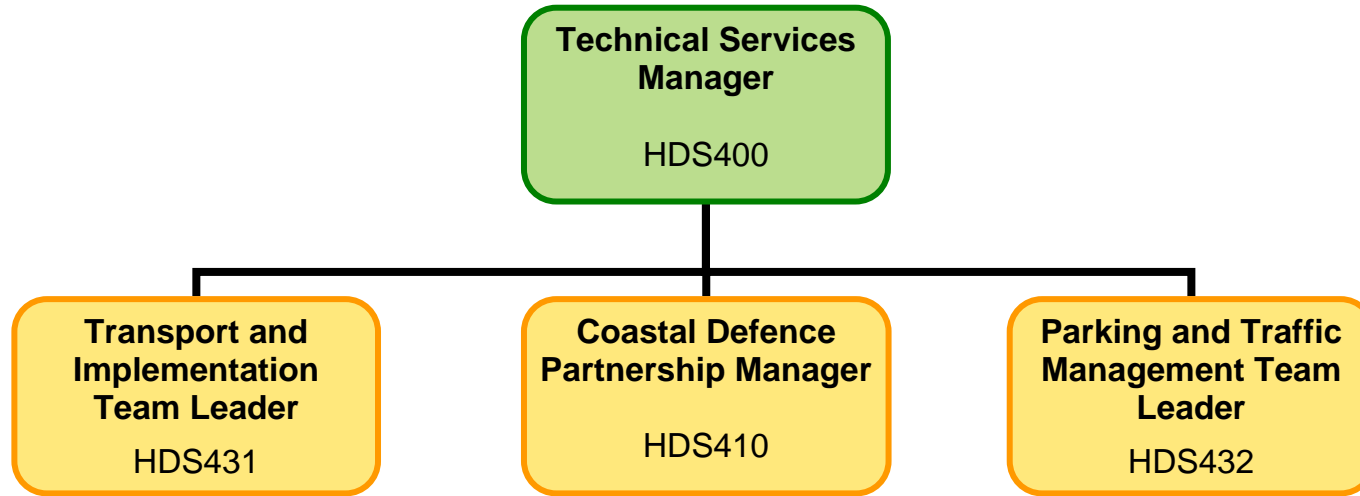


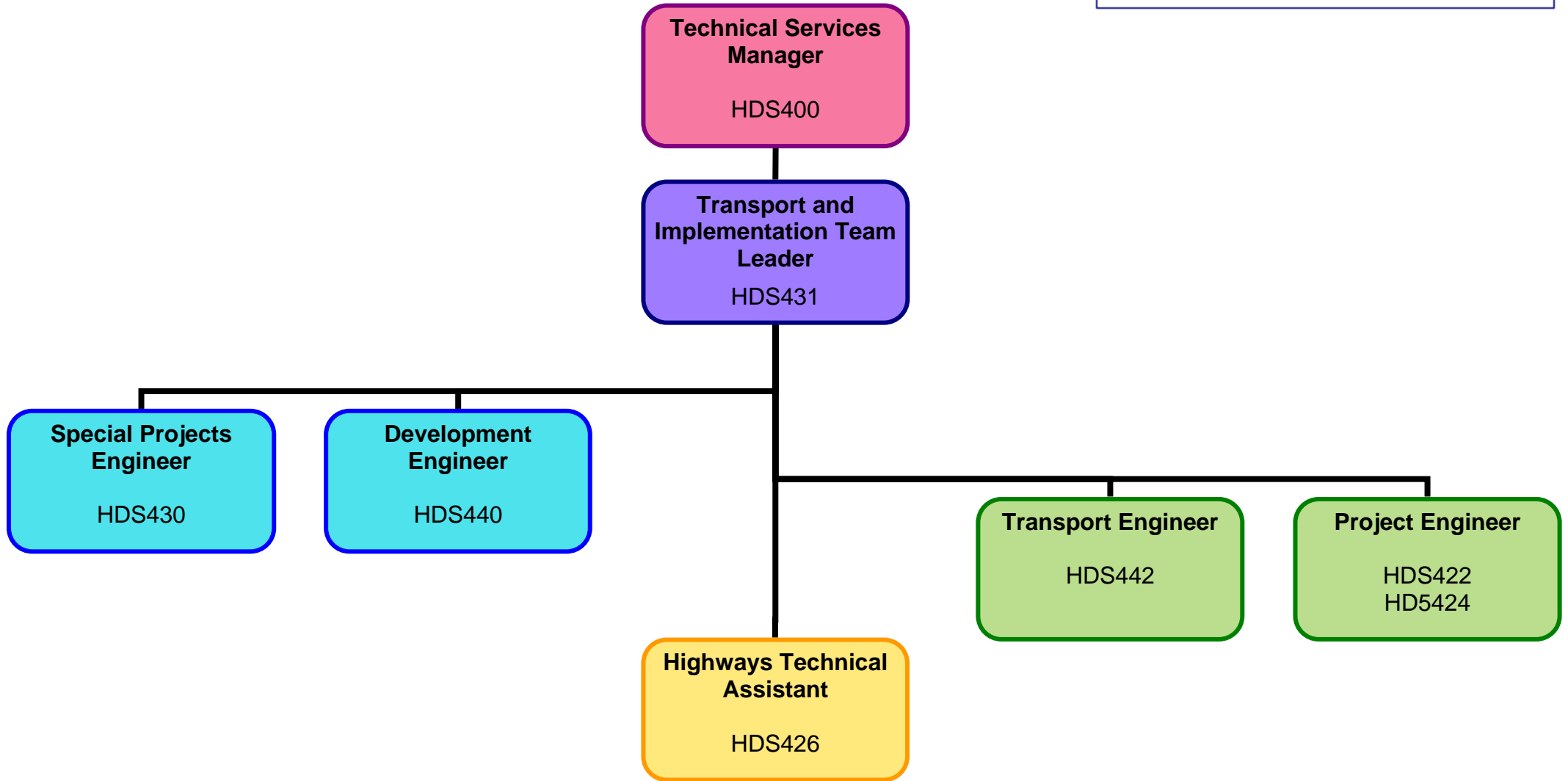












Back to Upper Management Structure

Capital Project Implementation / Maint / Asset Insp / Day to Day

Survey & Research

Coastal Strategies & Capital Project Design (SMP / CDS ,

Technical Services Manager
Partnership Client Manager
HDS400 (HBC)

Coastal Defence Partnership Manager
HDS410 (HBC)

Senior Coastal Engineer
(PCC)

Coastal Engineer
(PCC)

Coastal Engineer
HDS420

Technician
HDS418
(HBC)

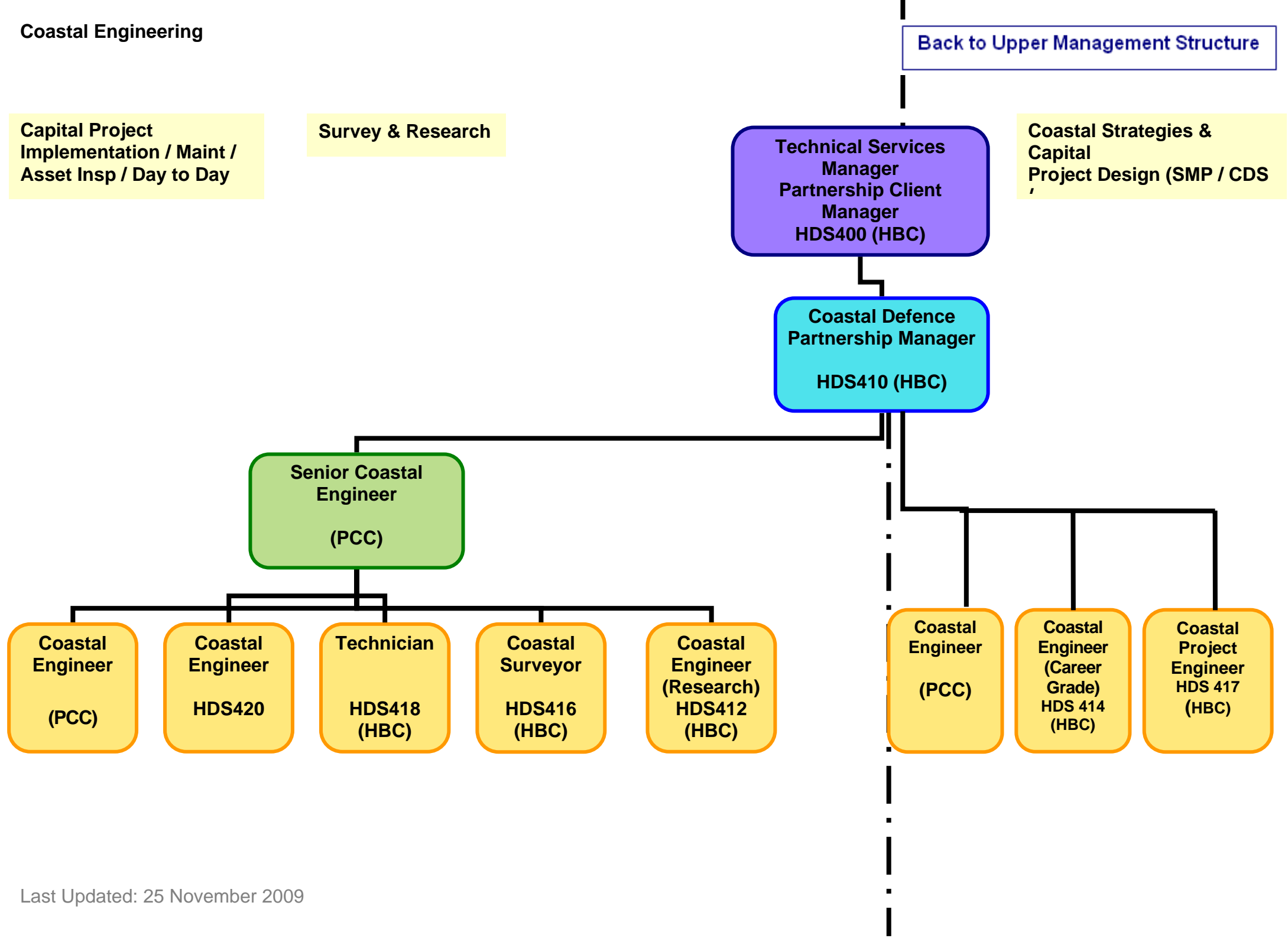
Coastal Surveyor
HDS416
(HBC)

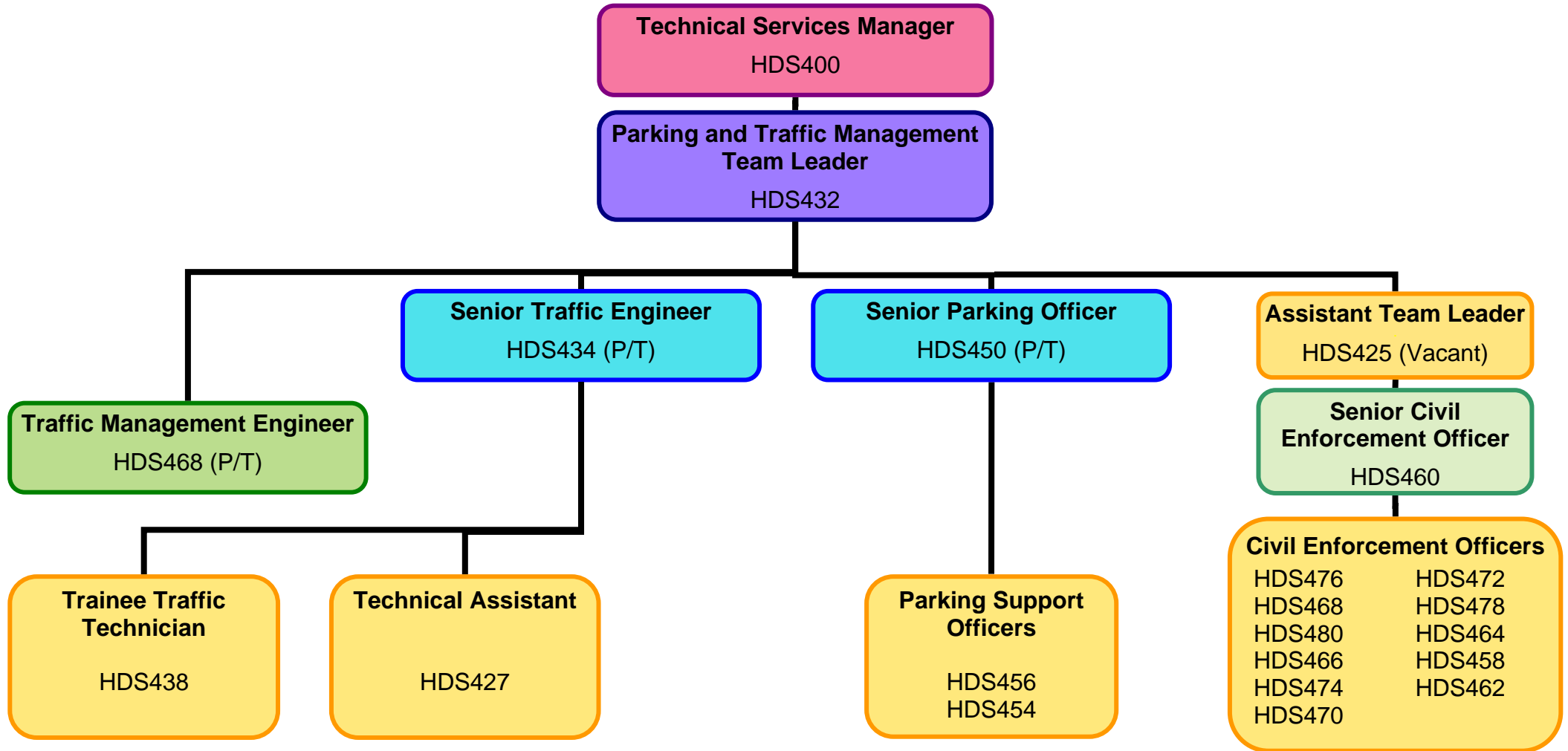
Coastal Engineer (Research)
HDS412
(HBC)

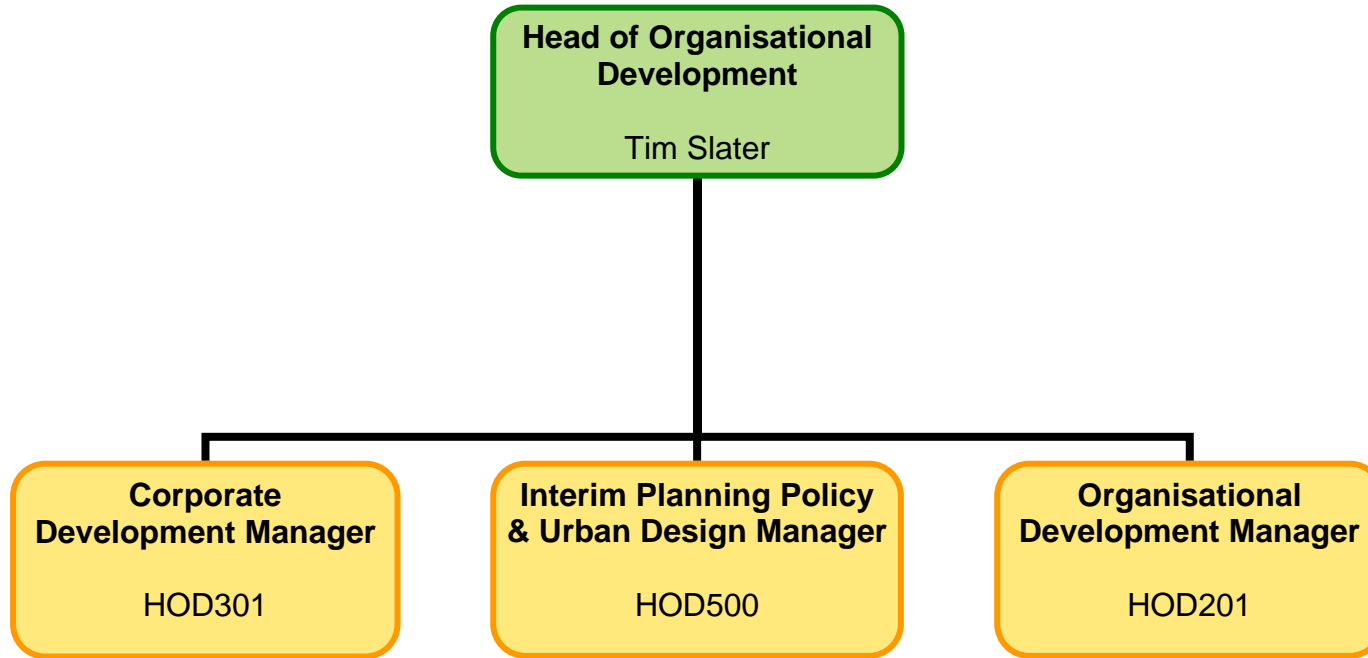
Coastal Engineer
(PCC)

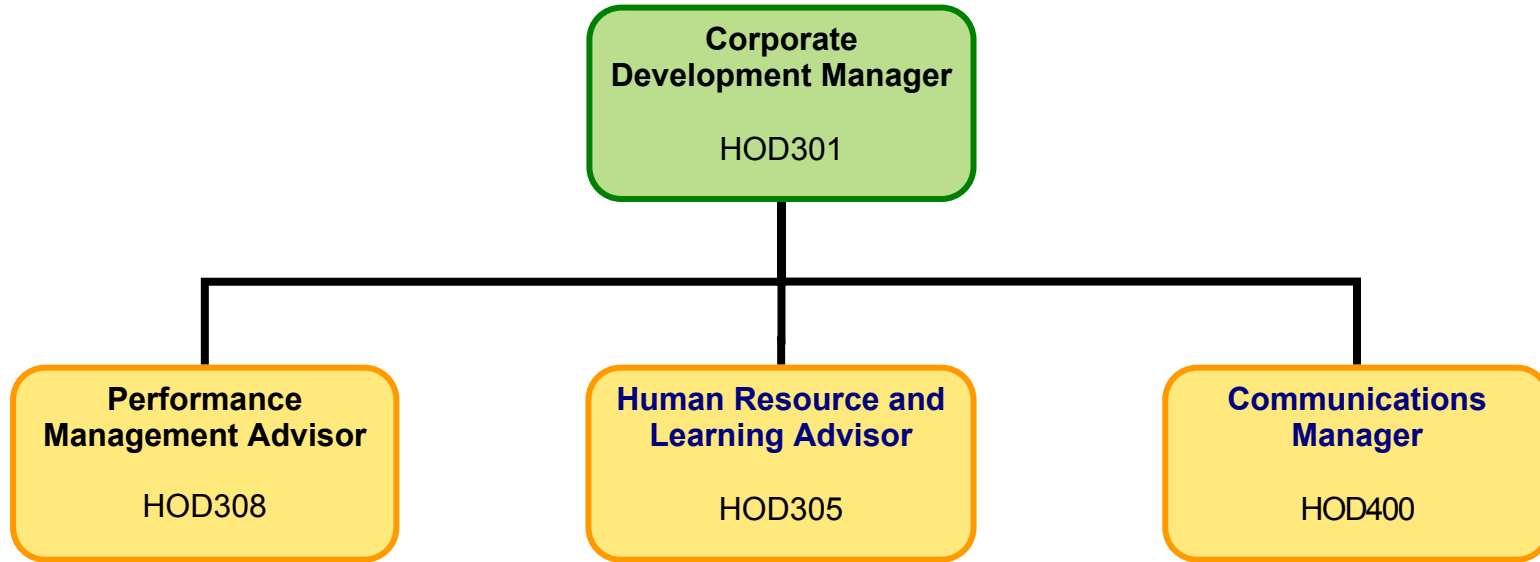
Coastal Engineer (Career Grade)
HDS 414
(HBC)

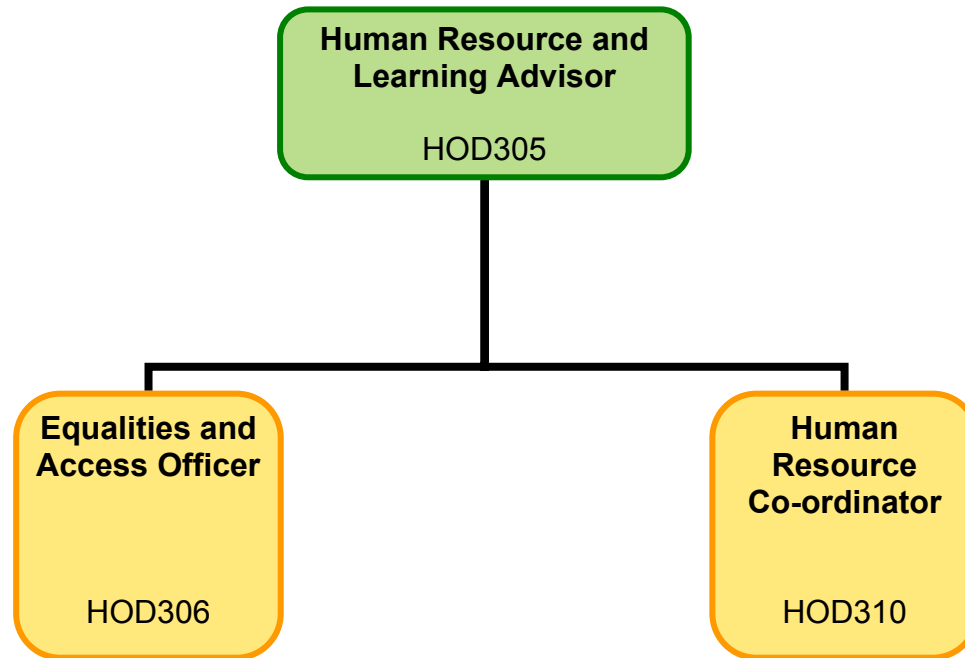
Coastal Project Engineer
HDS 417
(HBC)

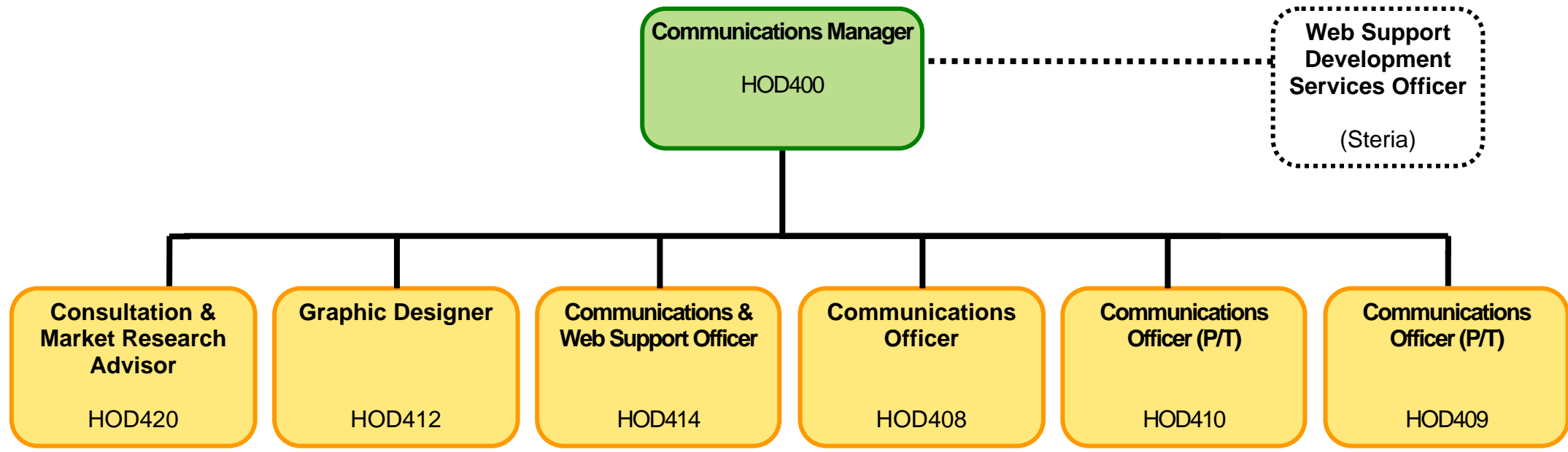




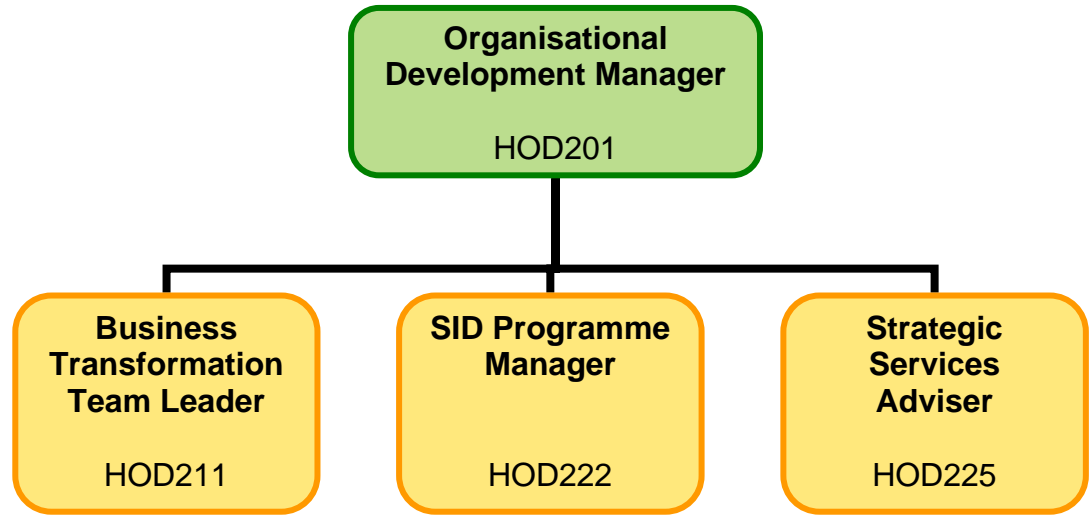


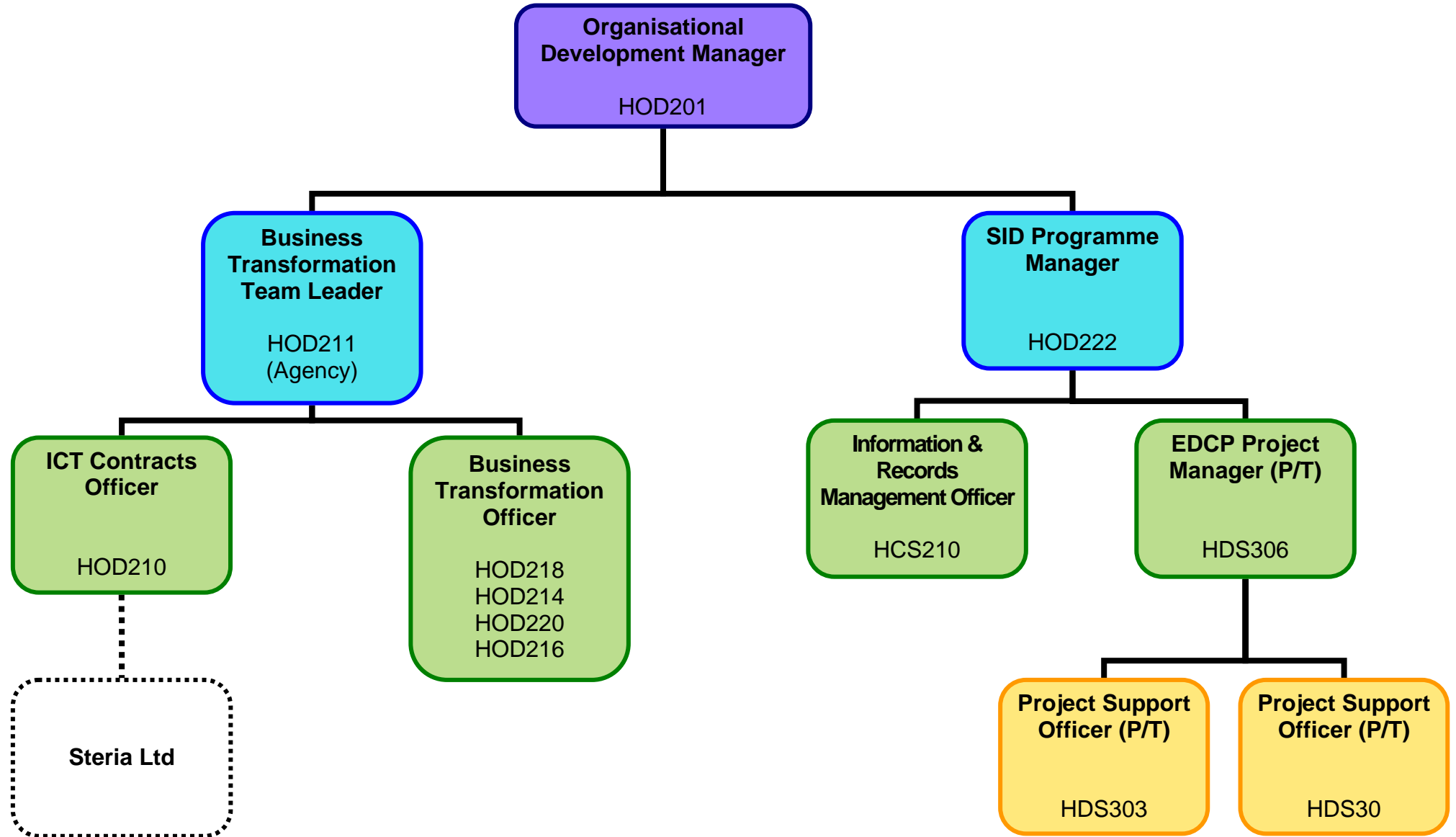




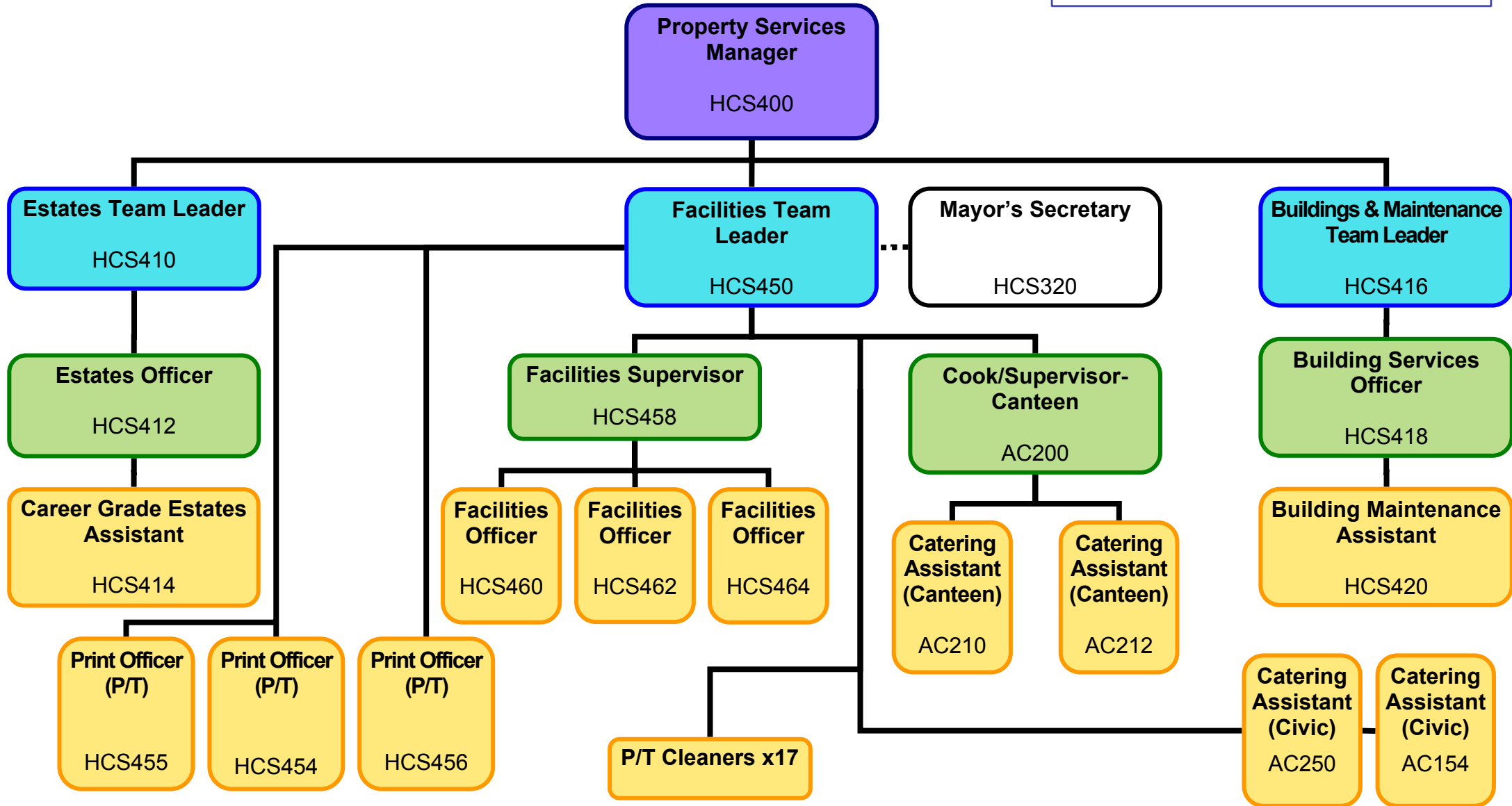


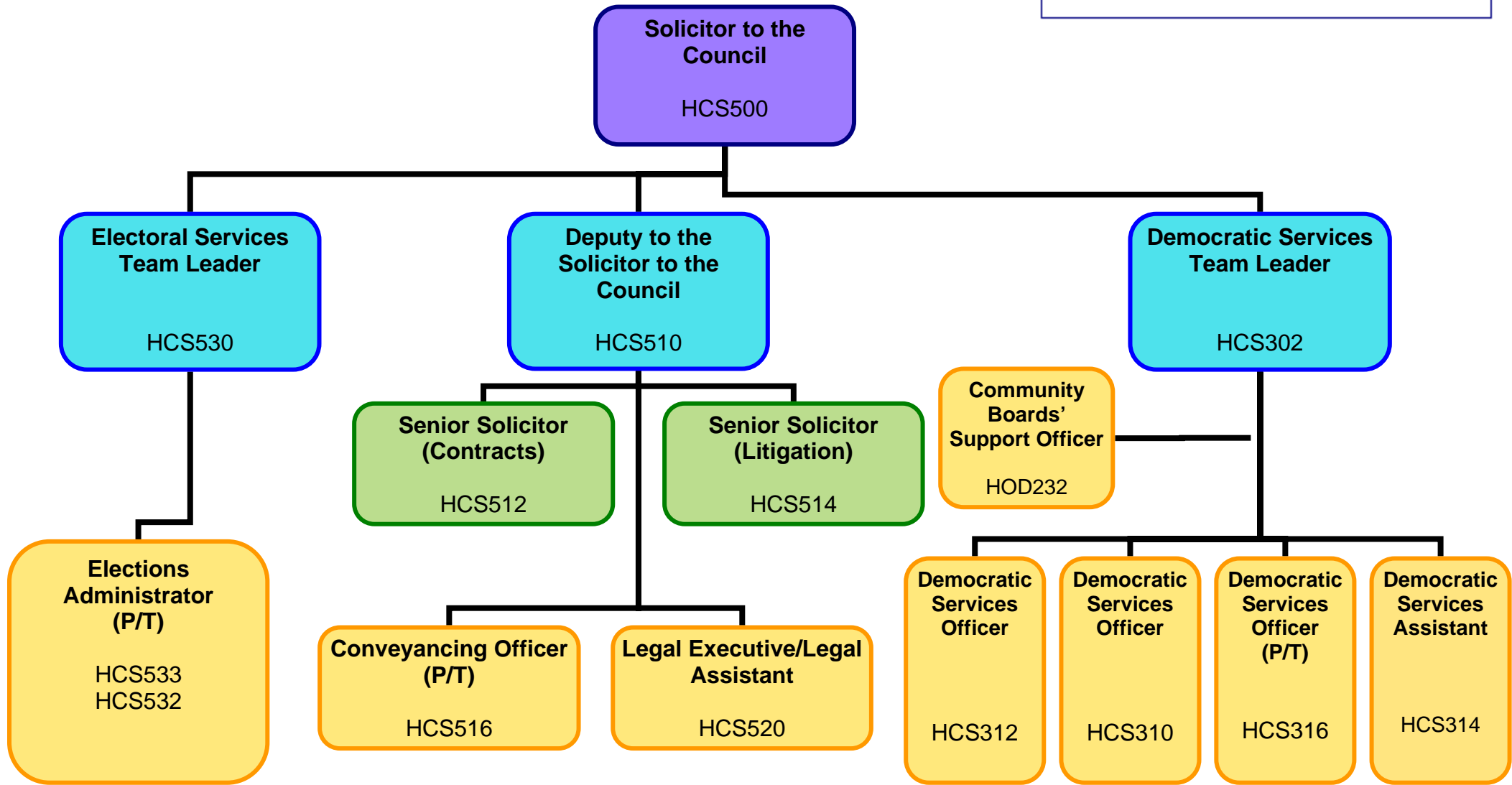
[Back to Upper Management Structure](#)

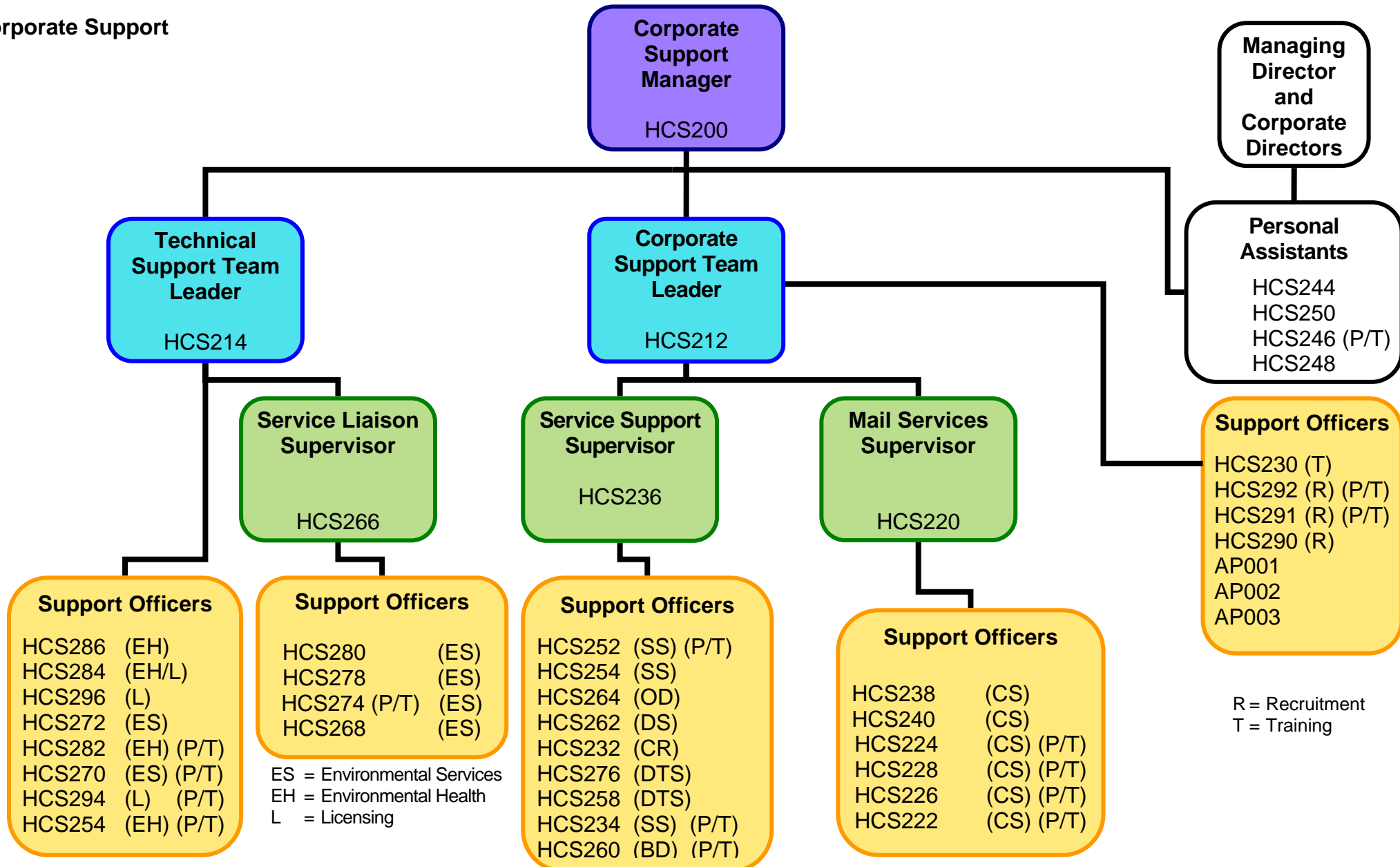




[Back to Upper Management Structure](#)



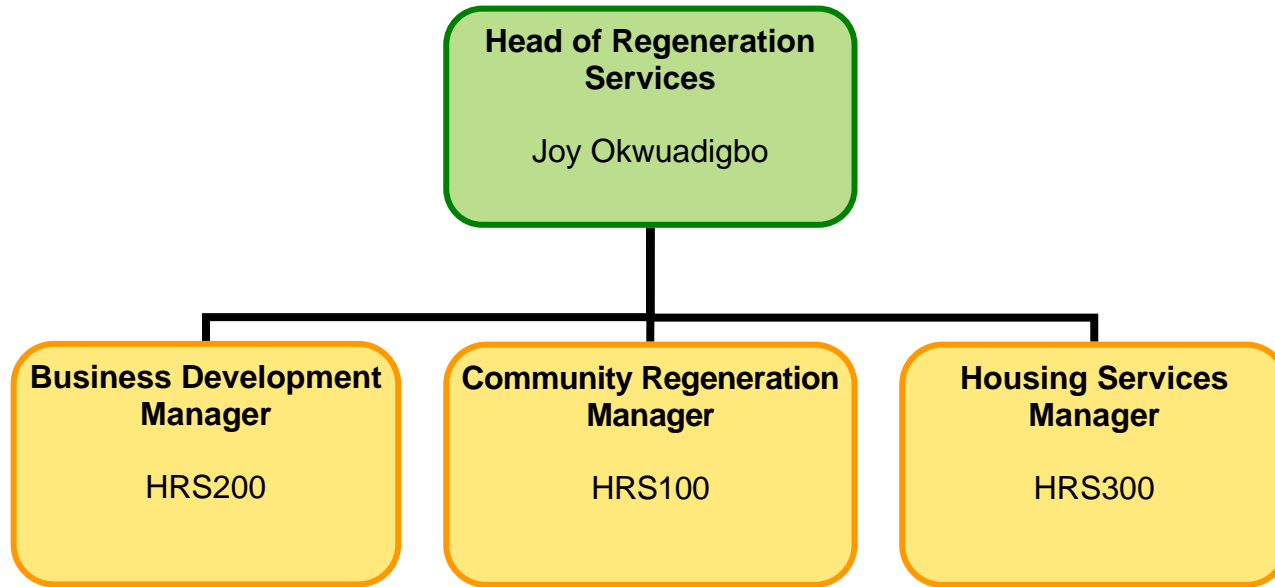


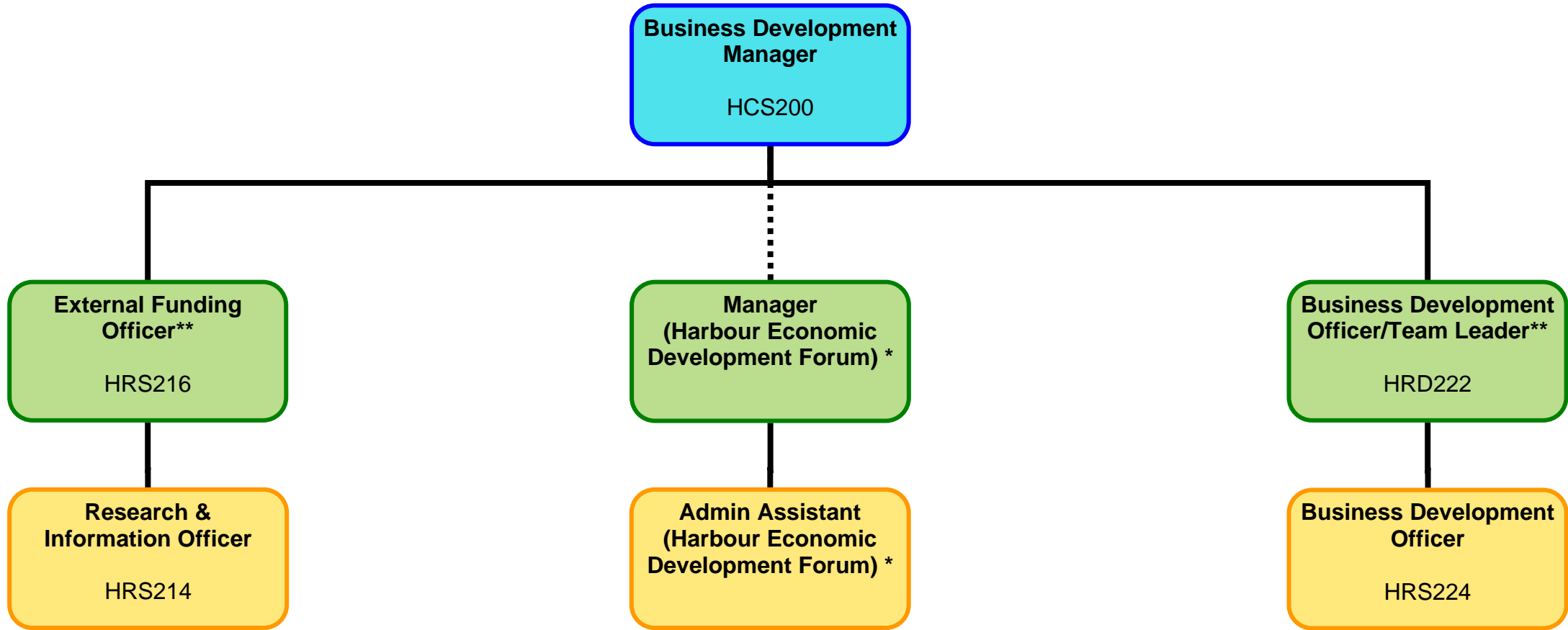


ES = Environmental Services
EH = Environmental Health
L = Licensing

DTS = Development & Technical Services
OD = Organisational Development
CR = Community Regeneration
DS = Democratic Services
SS = Service Support
BD = Business Development

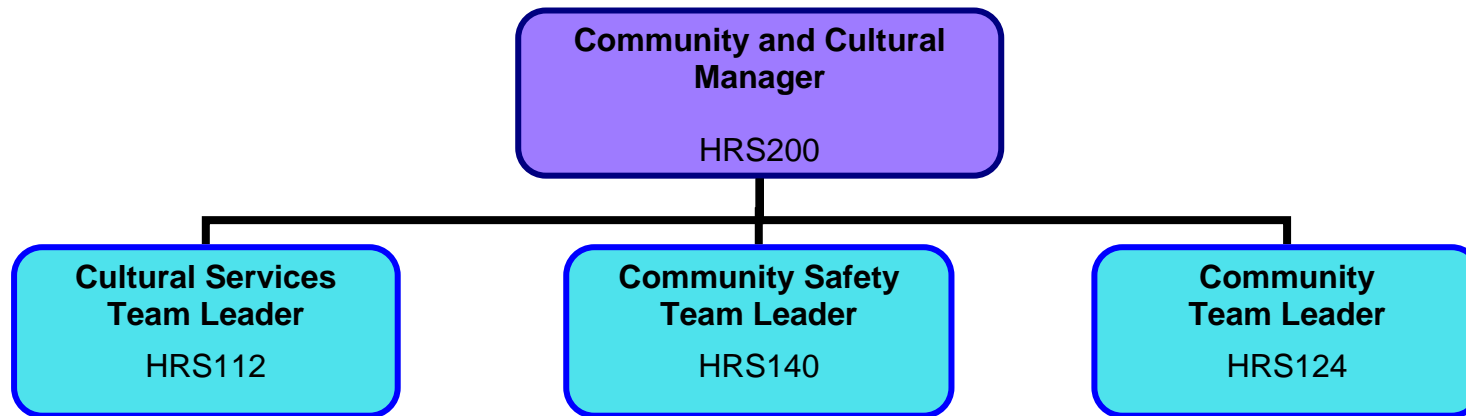
R = Recruitment
T = Training



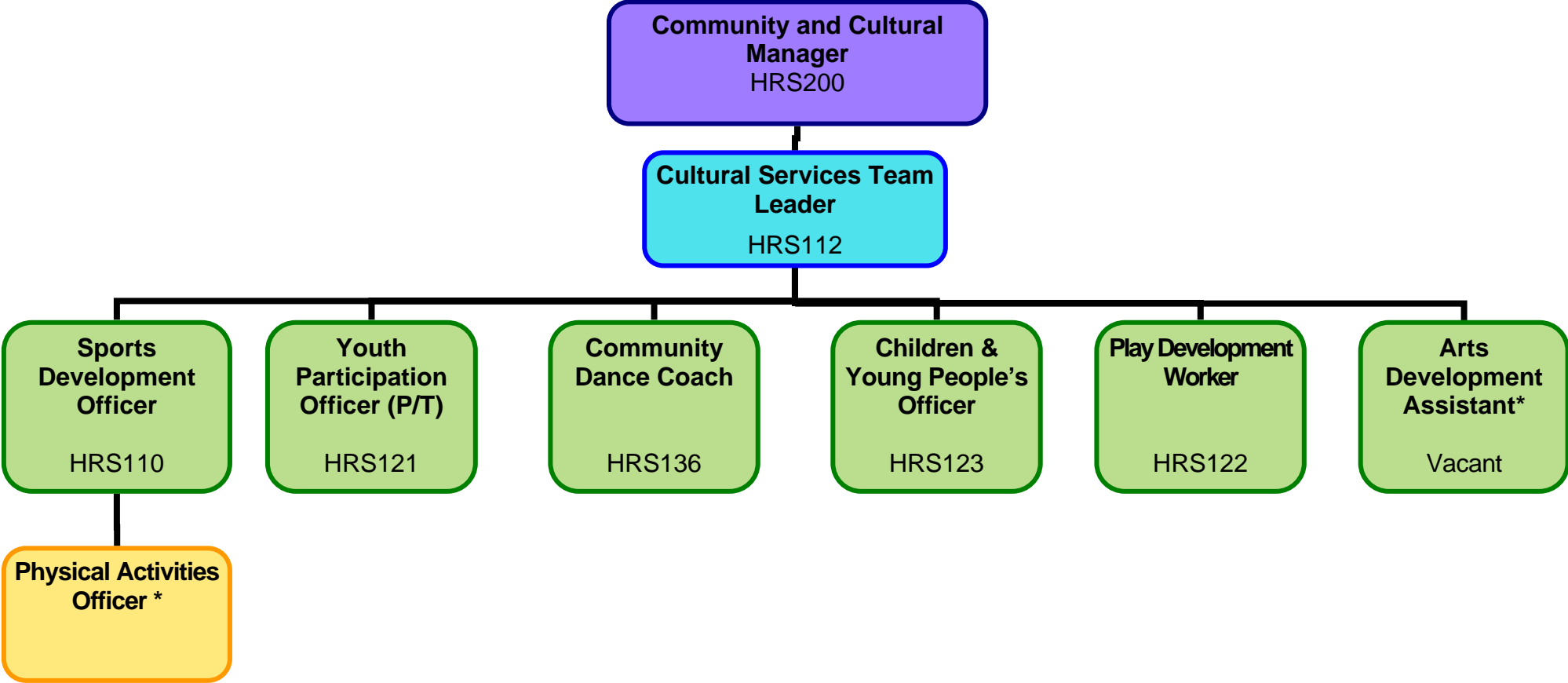


* Employed by Portsmouth City Council, based at Havant Borough Council

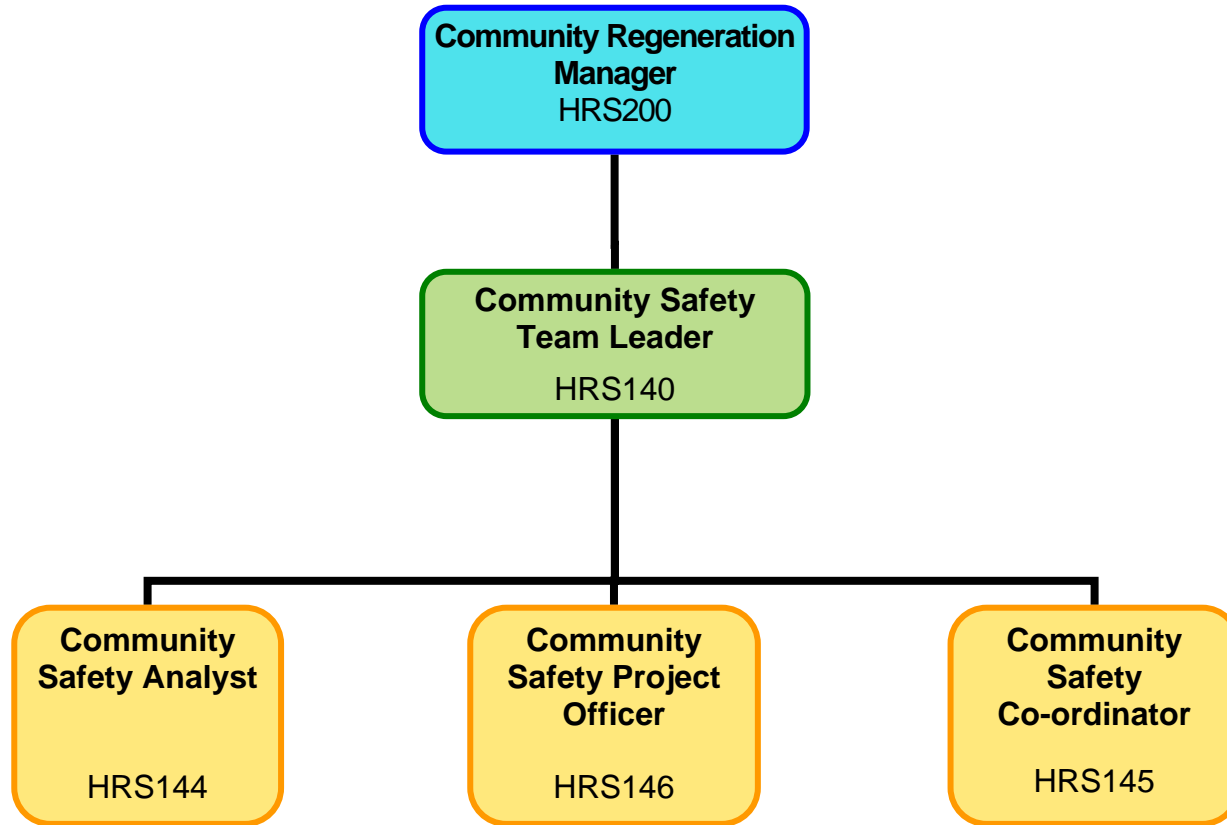
** Business Development Manager is temporarily being filled by the External Funding Officer and Business Development Officer/Team Leader



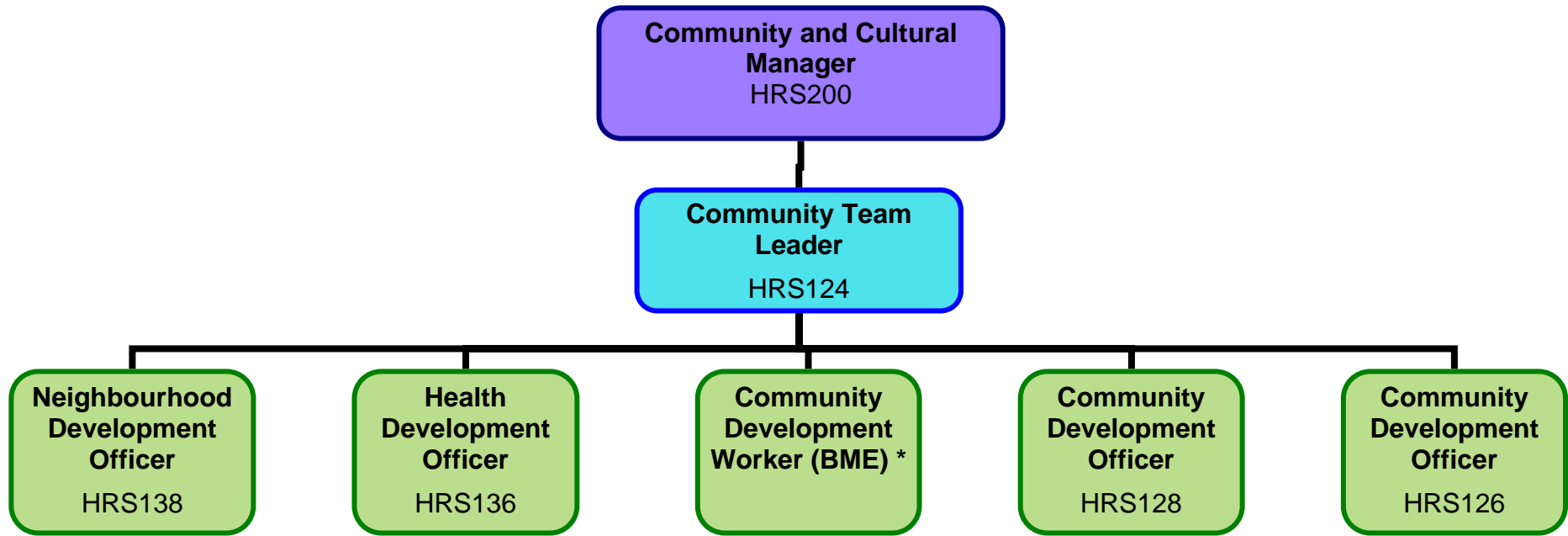
Community Regeneration – Cultural



* Externally Funded



Community Regeneration – Community



* Externally Funded

