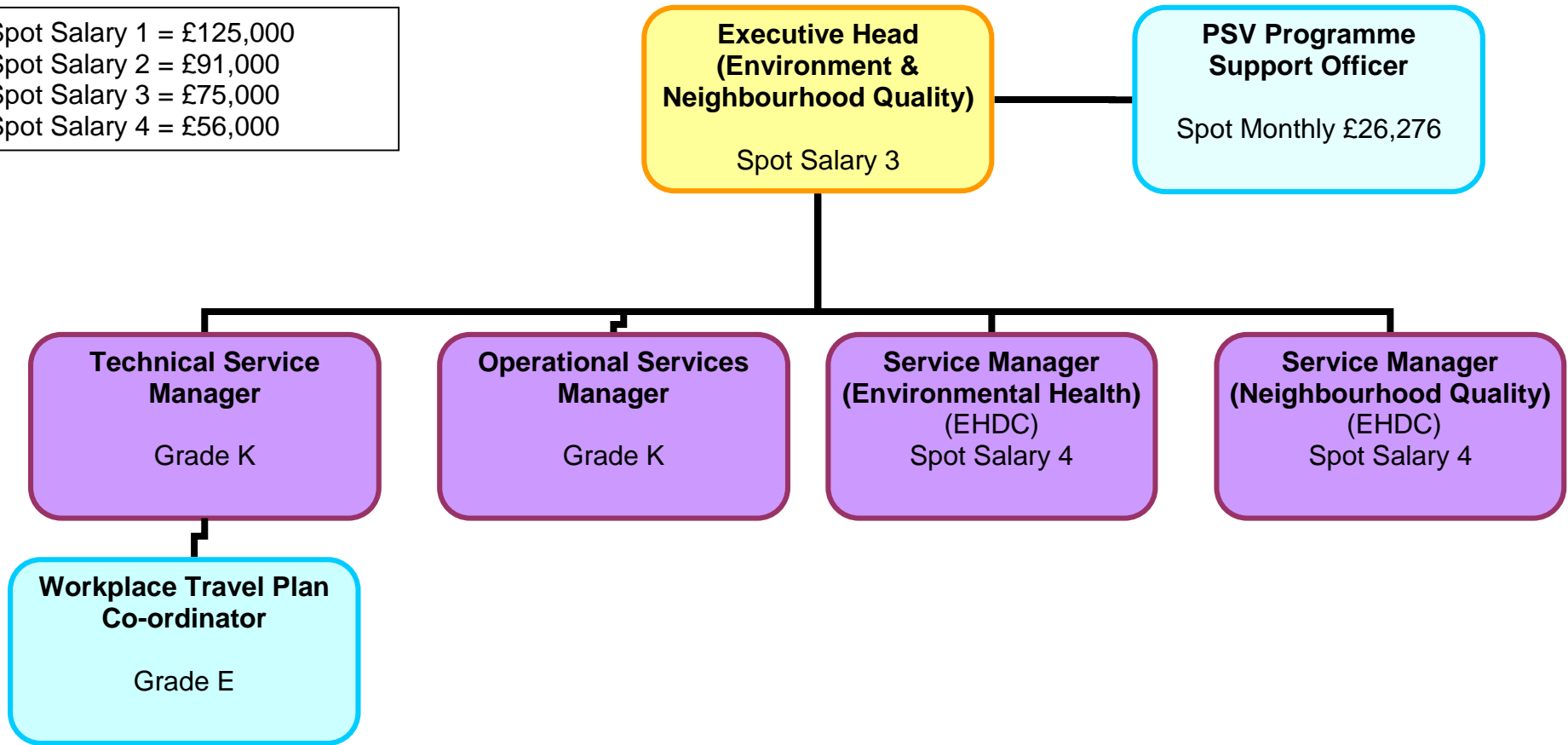
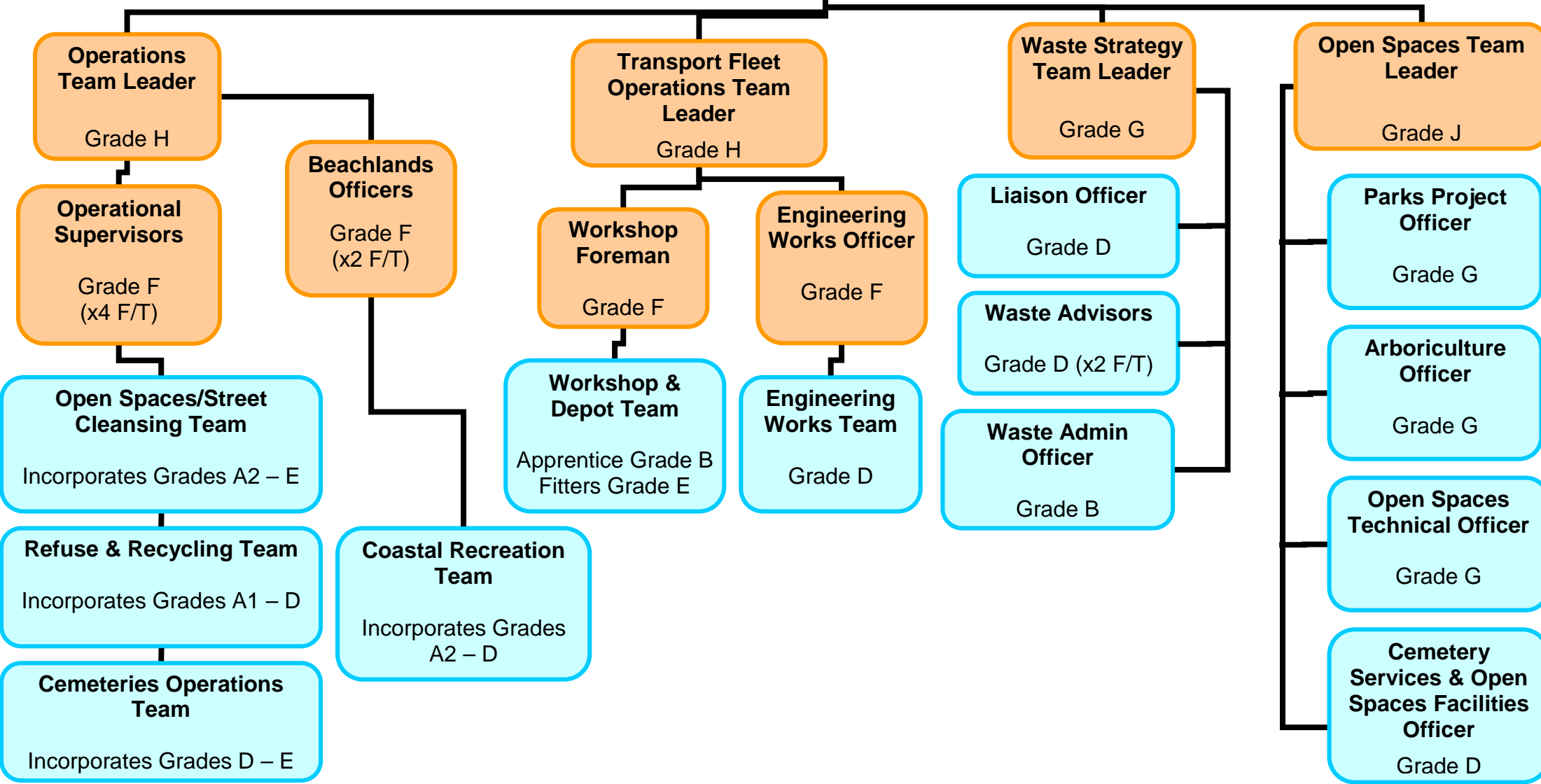
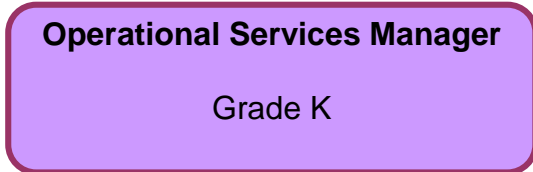


Environmental & Neighbourhood Quality

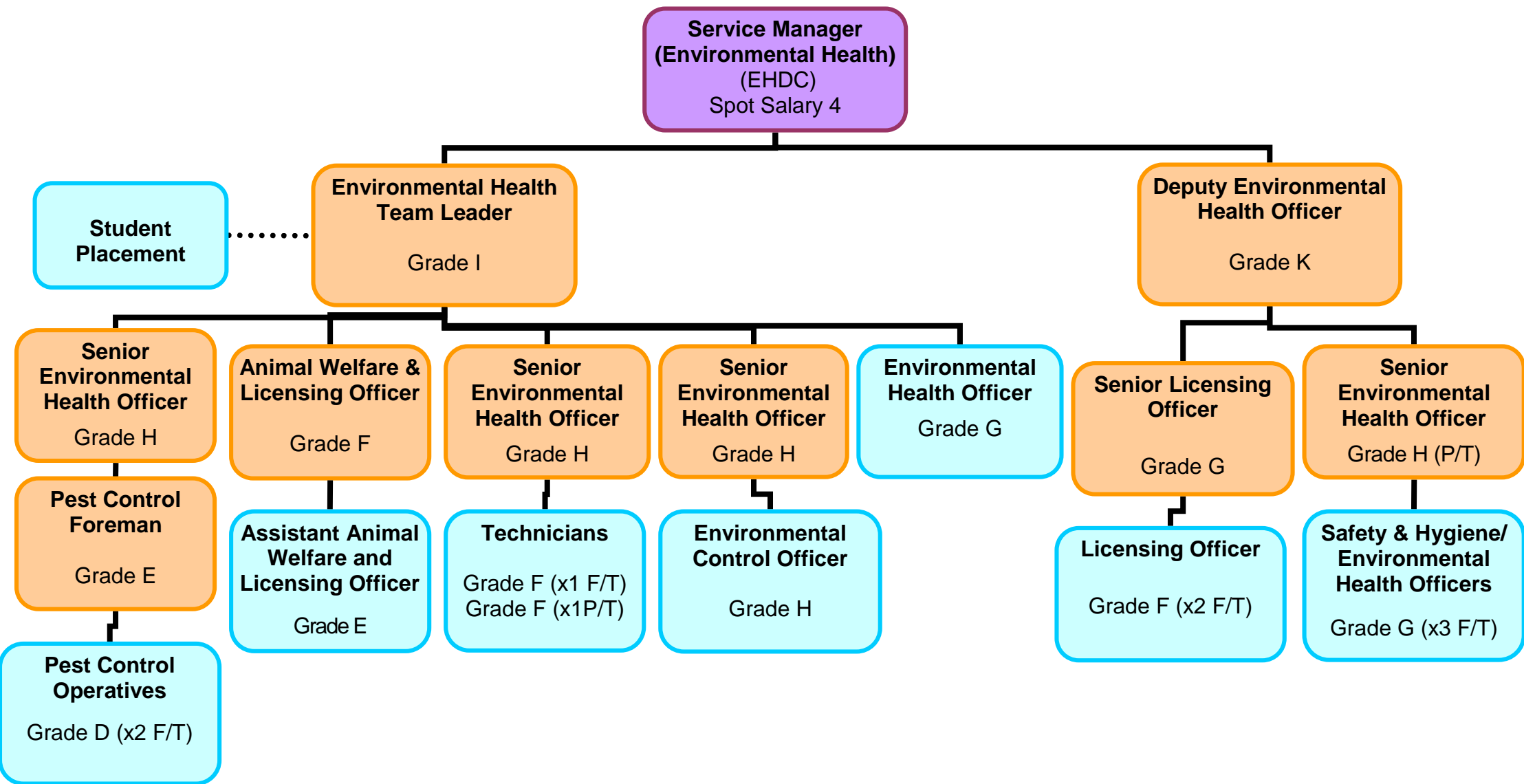
Spot Salary 1 = £125,000
Spot Salary 2 = £91,000
Spot Salary 3 = £75,000
Spot Salary 4 = £56,000



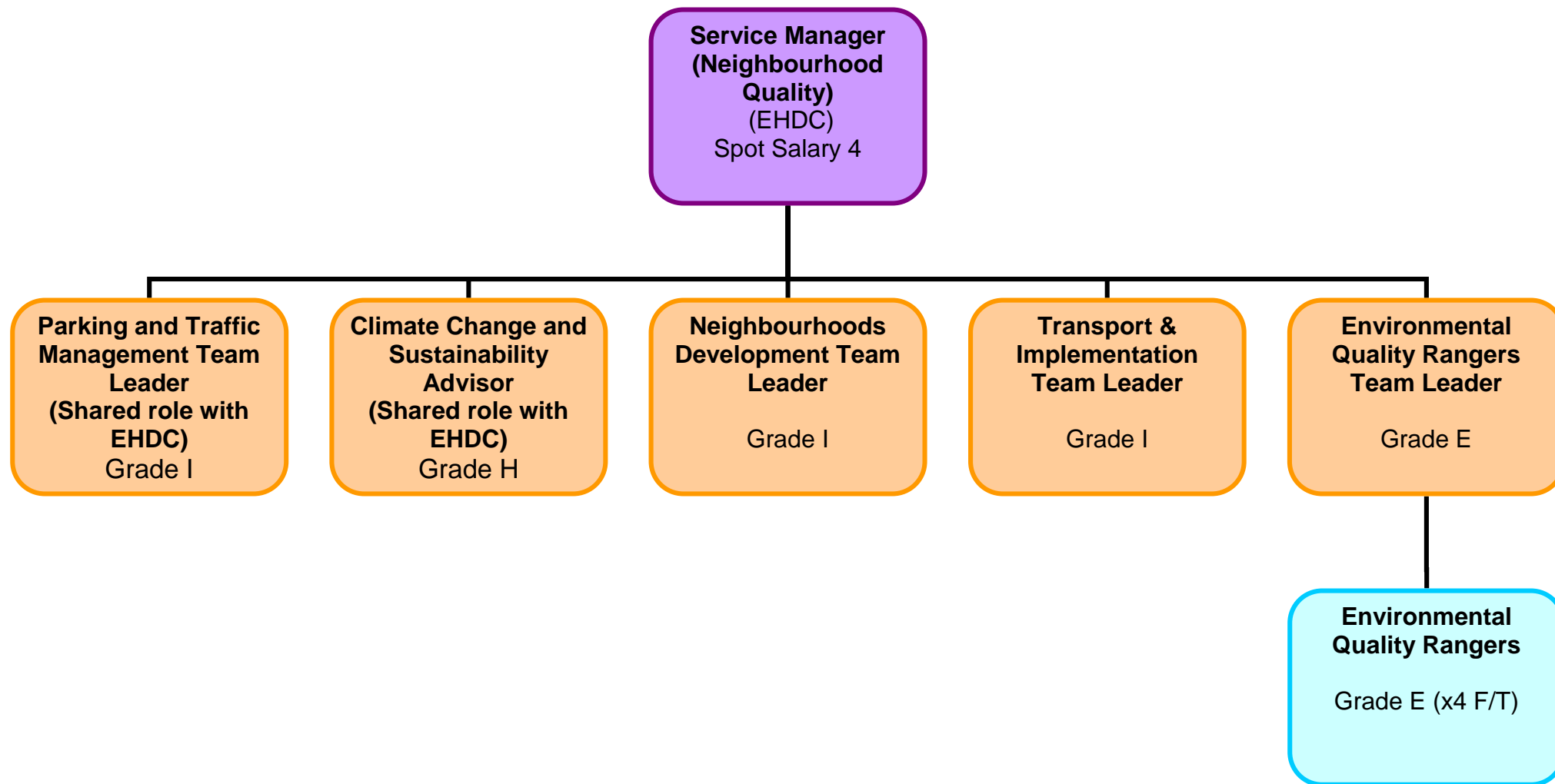
Operational Services



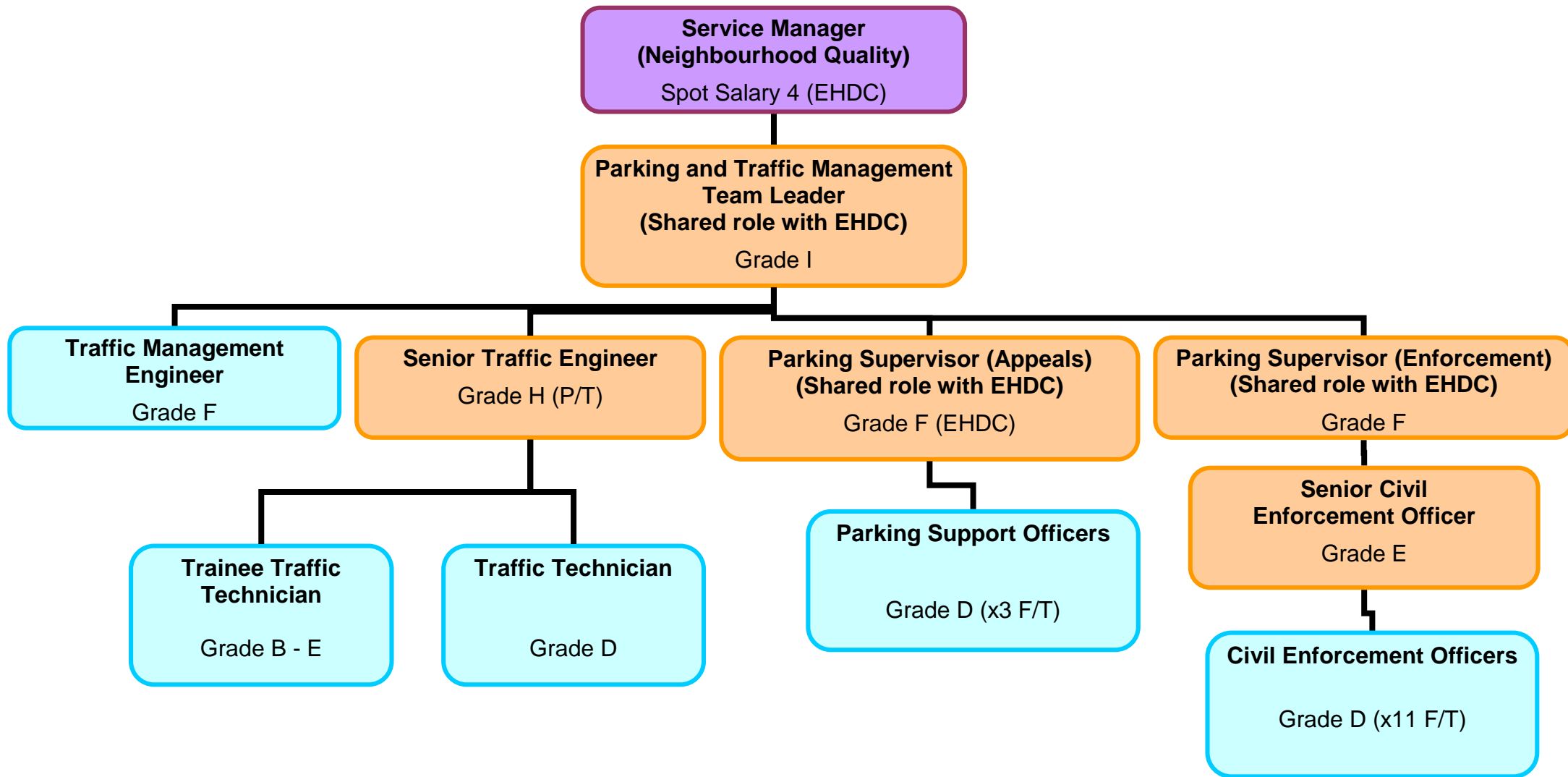
Environmental Health



Neighbourhood Quality



Parking and Traffic Management



Transport & Implementation

**Service Manager
(Neighbourhood Quality)
(EHDC)**
Spot Salary 4

**Transport and
Implementation Team
Leader**
Grade I

**Development
Engineer**
Grade H

**Transport
Engineer**
Grade G

**Senior
Landscape
Architect**
Grade I

**Landscape
Architect
(Career Grade)**
Grade D - G

Technician
Grade D

**Special
Projects
Engineer**
Grade H

**Project
Engineer**
Grade H

**Project
Engineer**
Grade H

Neighbourhoods Development Team

